

# SORROW ISLE

## BUILD GUIDE



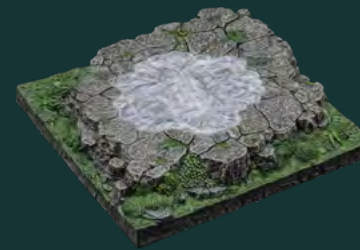




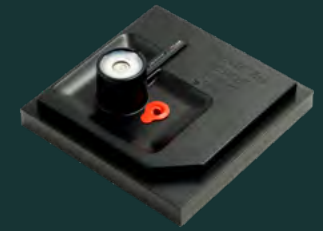
x4 - 24in x 24in Swamp Water  
Texture Mat (w/grid)



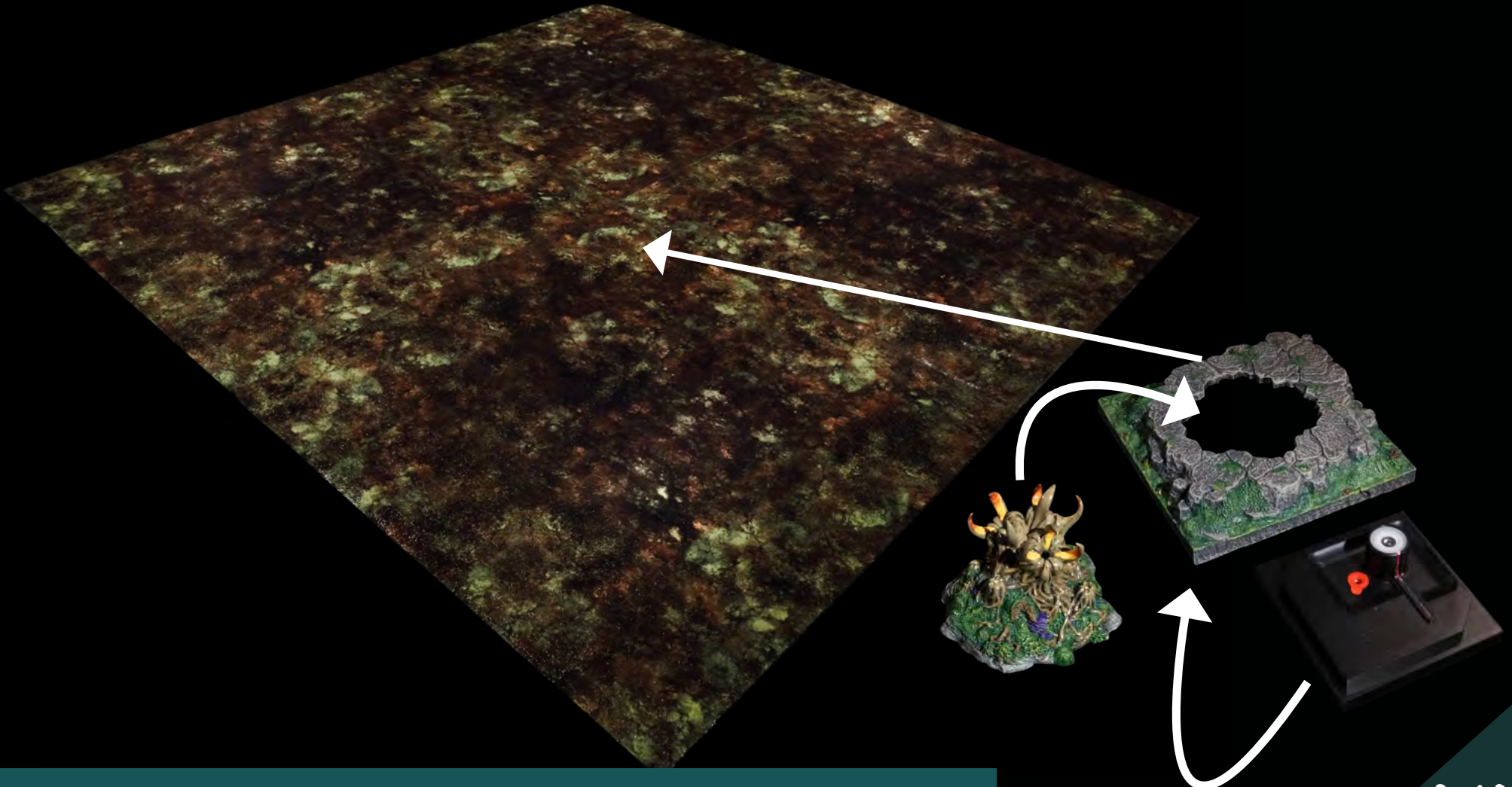
x1 - Spreading Sporeclaw -  
Fogger Cover



x1 - Hole Knoll Floor -  
SFX Cutout

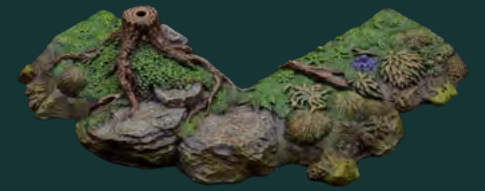


x1 - DF Floor Fogger

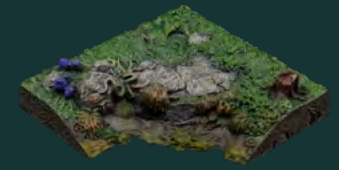


Line up the texture mats 2x2 and remove the cutout from the Hole Knoll Floor.





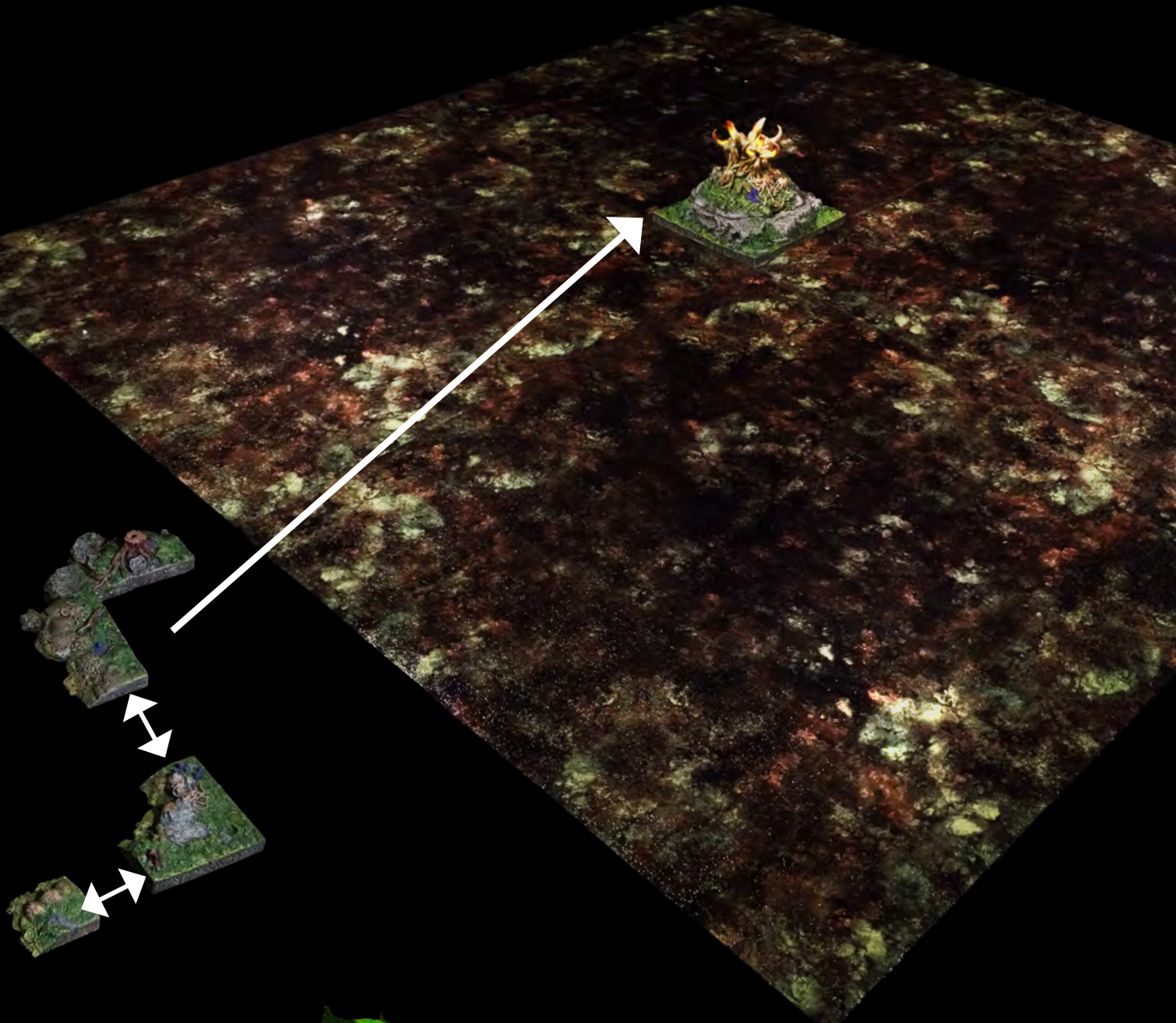
x1 - Convex Swamp Bank



x1 - Short Concave  
Swamp Bank



x1 - Short Convex  
Swamp Bank

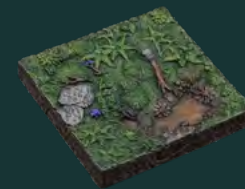




YOU  
ARE  
HERE



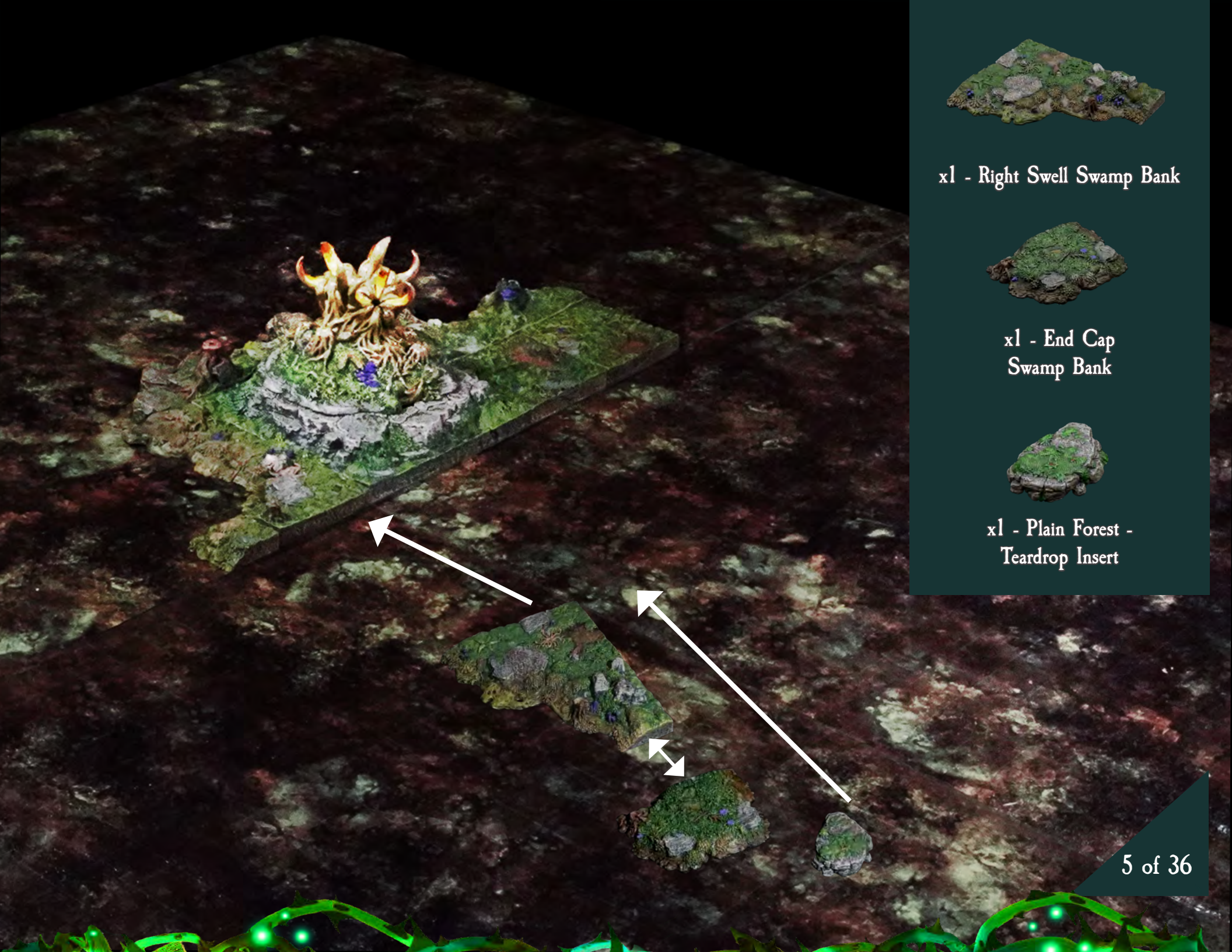
x1 -Left Swell Swamp Bank



x2 - 3x3 Swamp Floor







x1 - Right Swell Swamp Bank

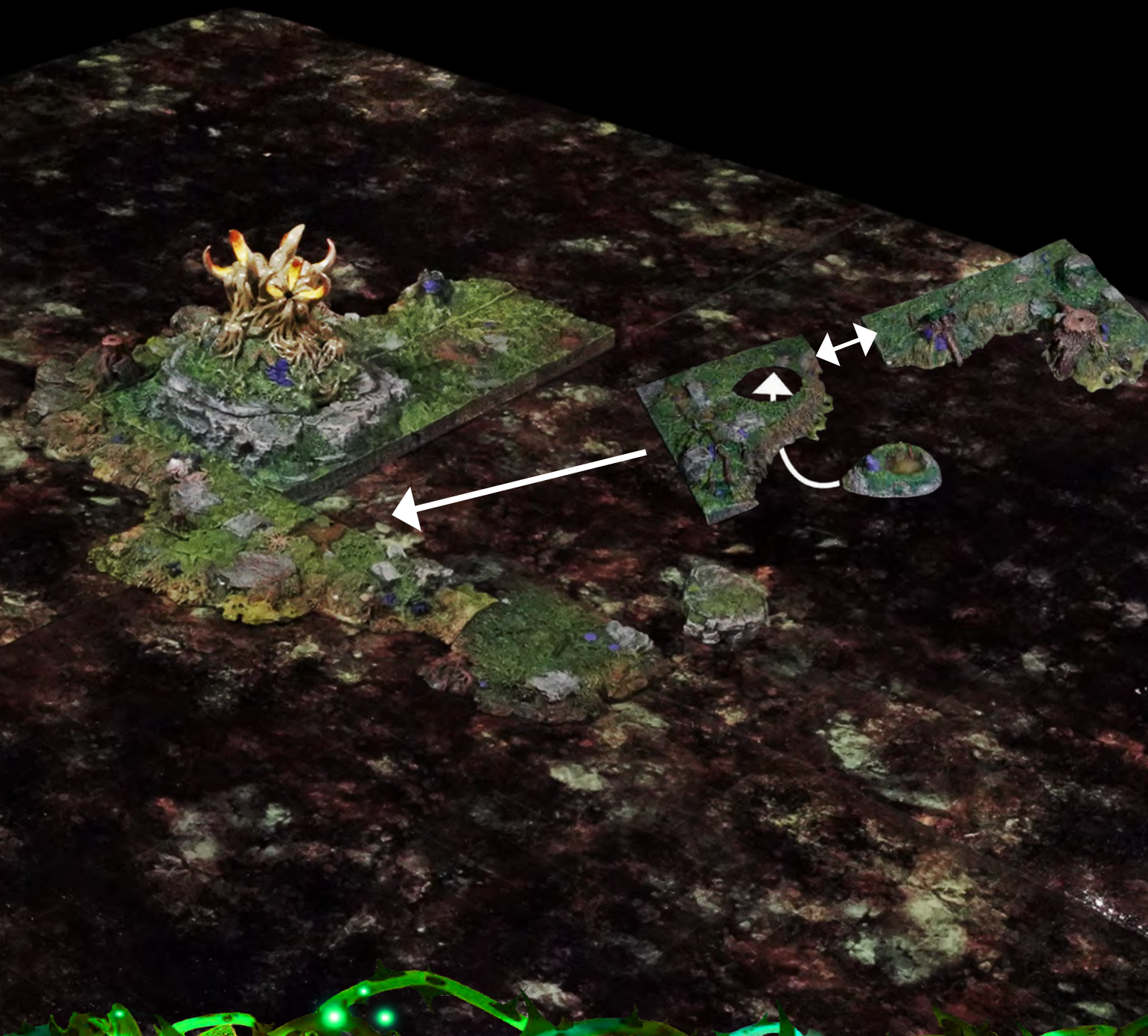


x1 - End Cap  
Swamp Bank



x1 - Plain Forest -  
Teardrop Insert

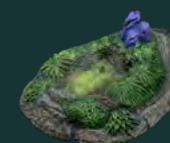




x1 -Left Swell Swamp Bank

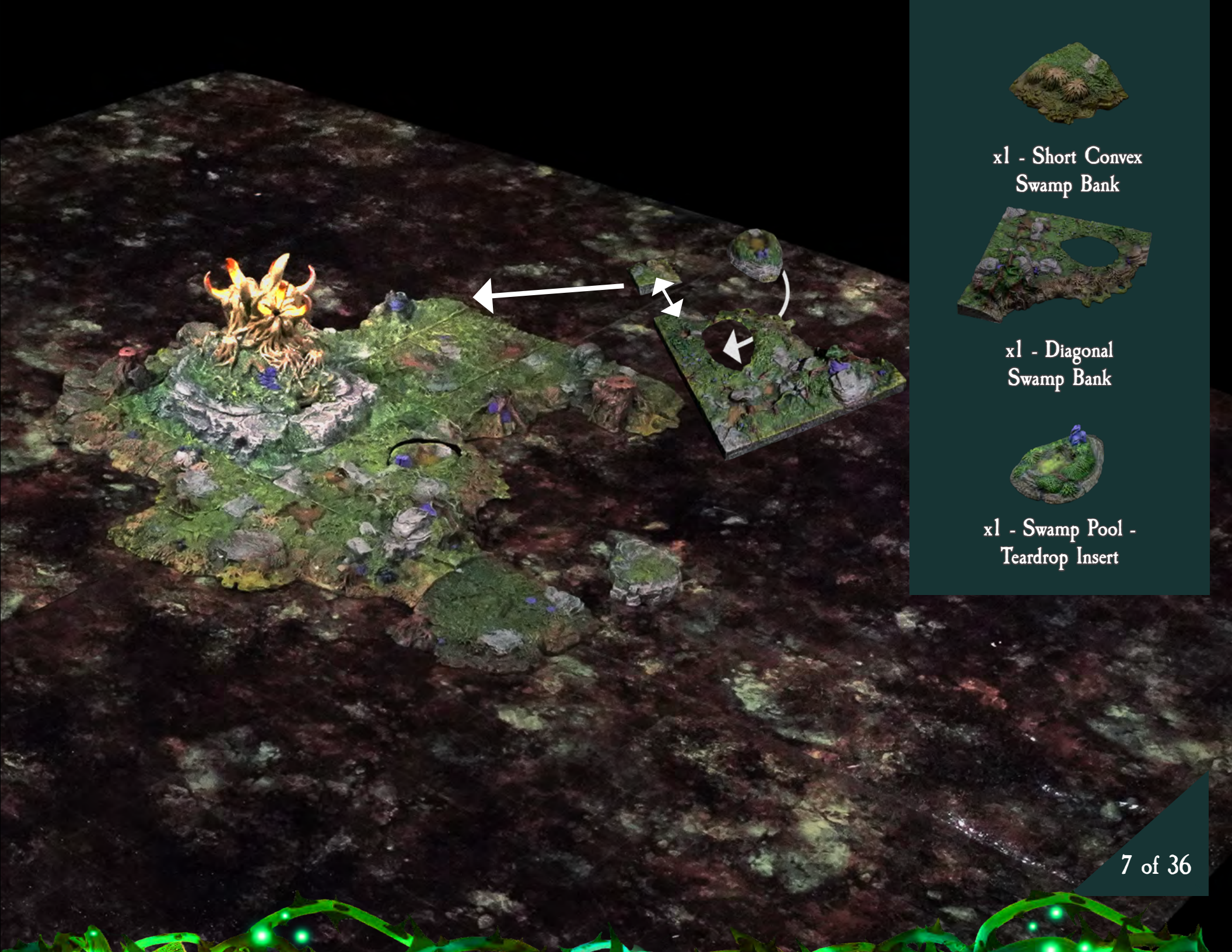


x1 - Diagonal  
Swamp Bank



x1 - Swamp Pool -  
Teardrop Insert

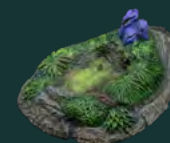




x1 - Short Convex  
Swamp Bank

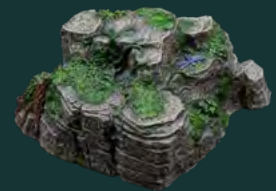


x1 - Diagonal  
Swamp Bank



x1 - Swamp Pool -  
Teardrop Insert





x1 - Stepped Rock

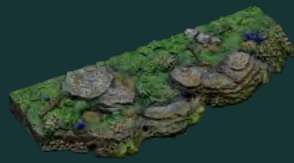


x1 - Large Swamp  
Stump Lump





x1 - Concave  
Swamp Bank



x1 - Straight  
Swamp Bank



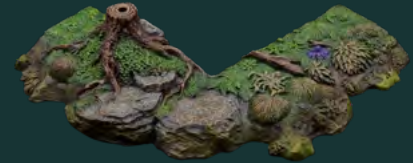
x1 - Short Straight  
Swamp Bank



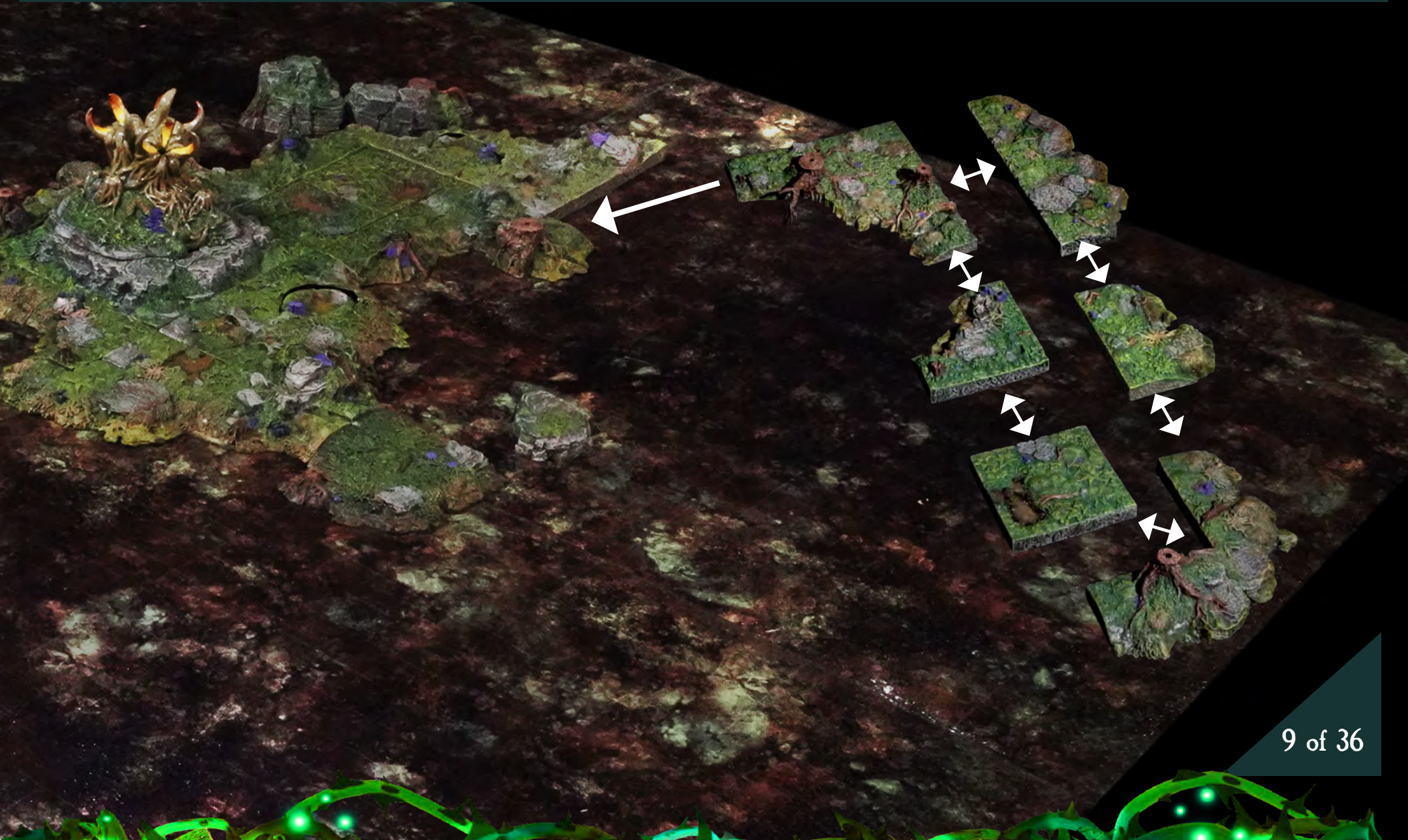
x1 - Short Concave  
Swamp Bank



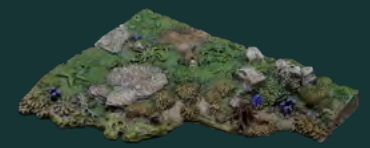
x1 - 3x3  
Swamp Floor



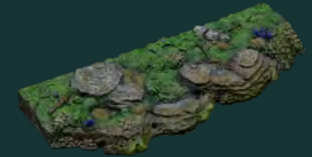
x1 - Convex  
Swamp Bank







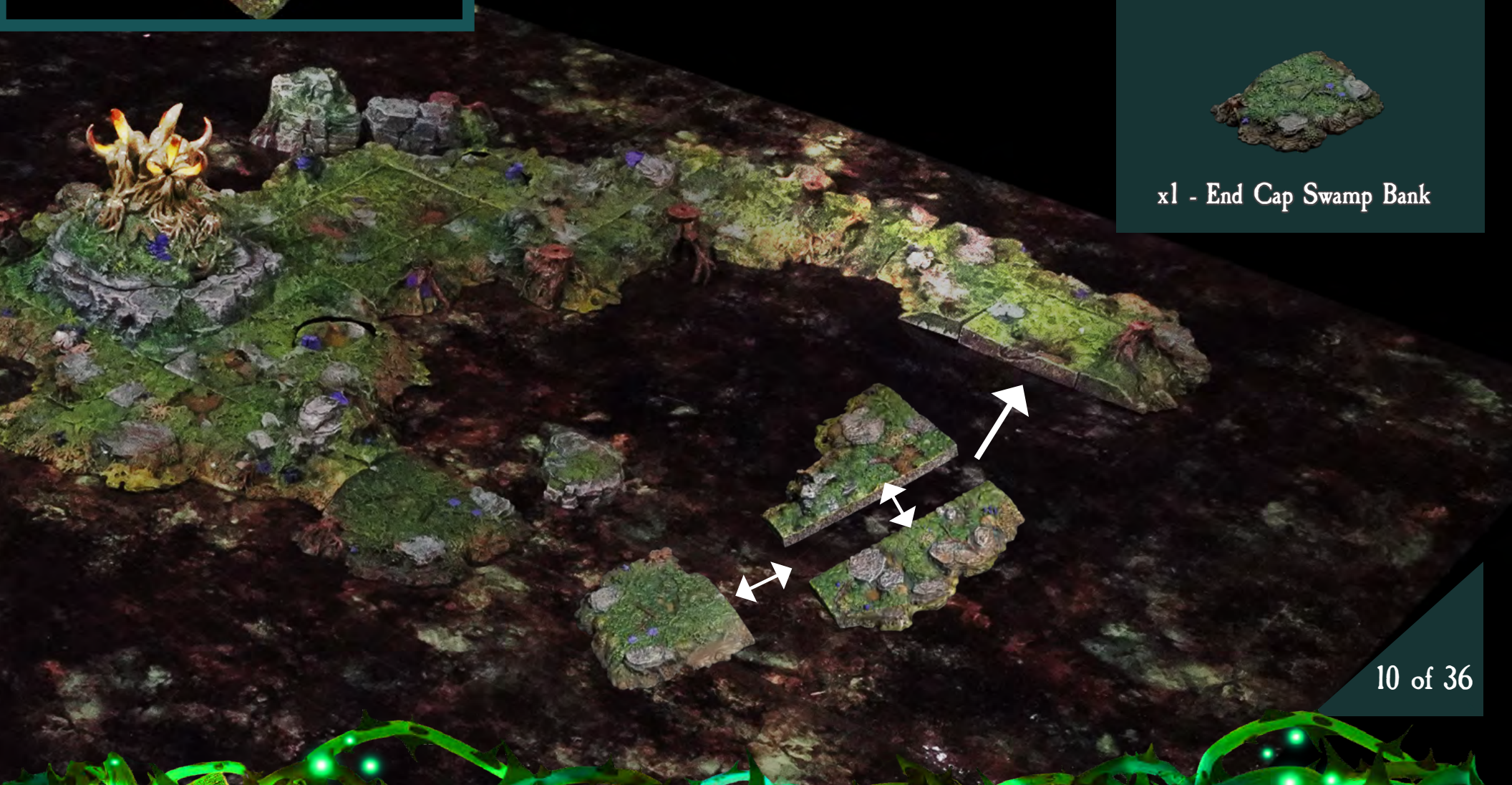
x1 - Right Swell Swamp Bank



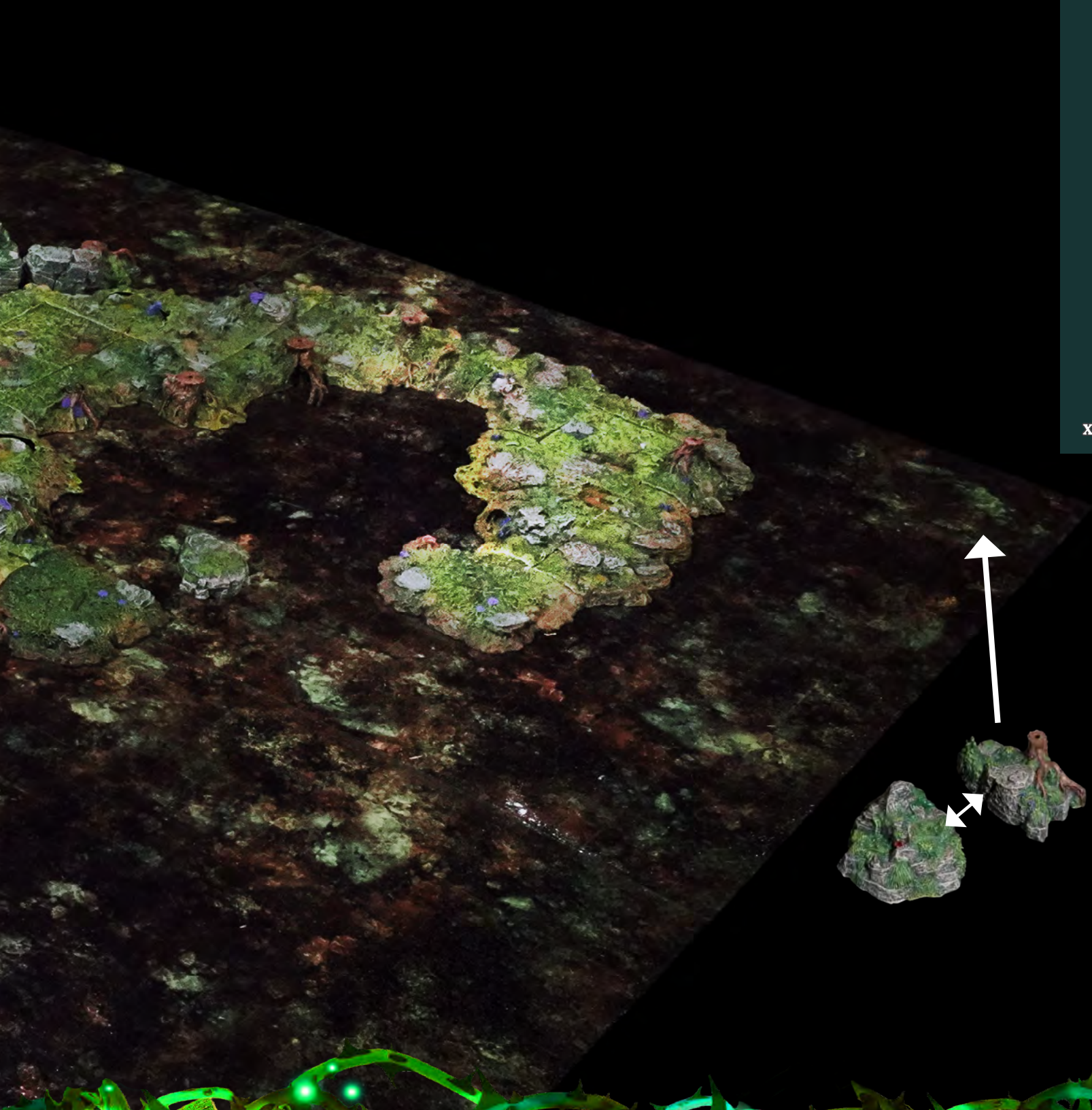
x1 - Straight Swamp Bank



x1 - End Cap Swamp Bank







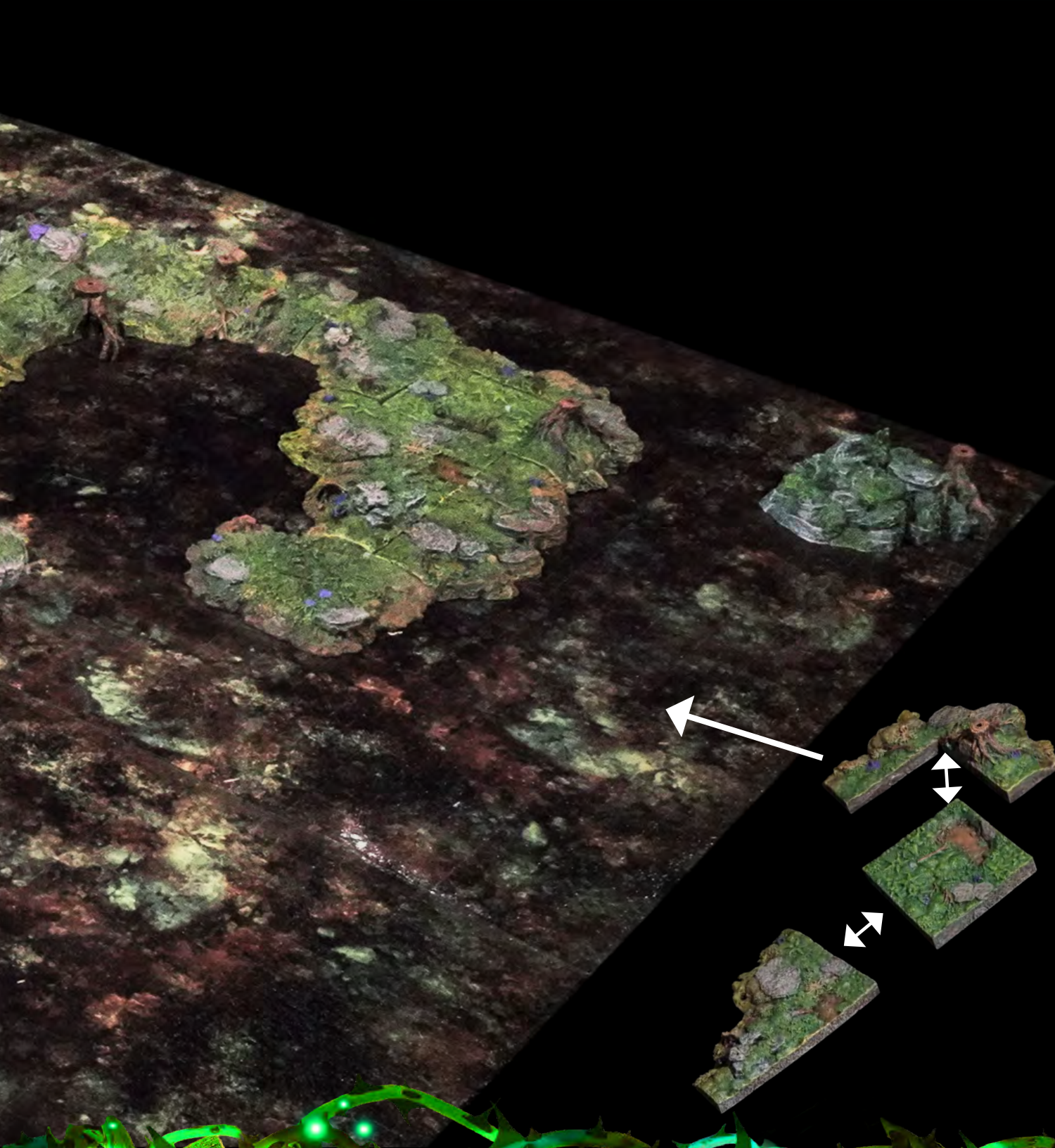
x1 - Hidden Burrow Lump



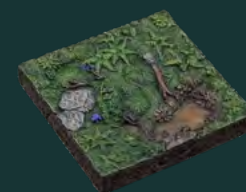
x1 - Small Swamp Stump Lump



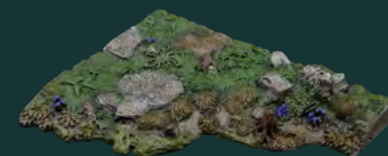




x1 - Convex Swamp Bank

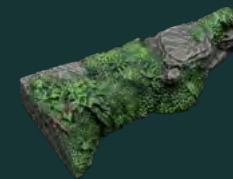
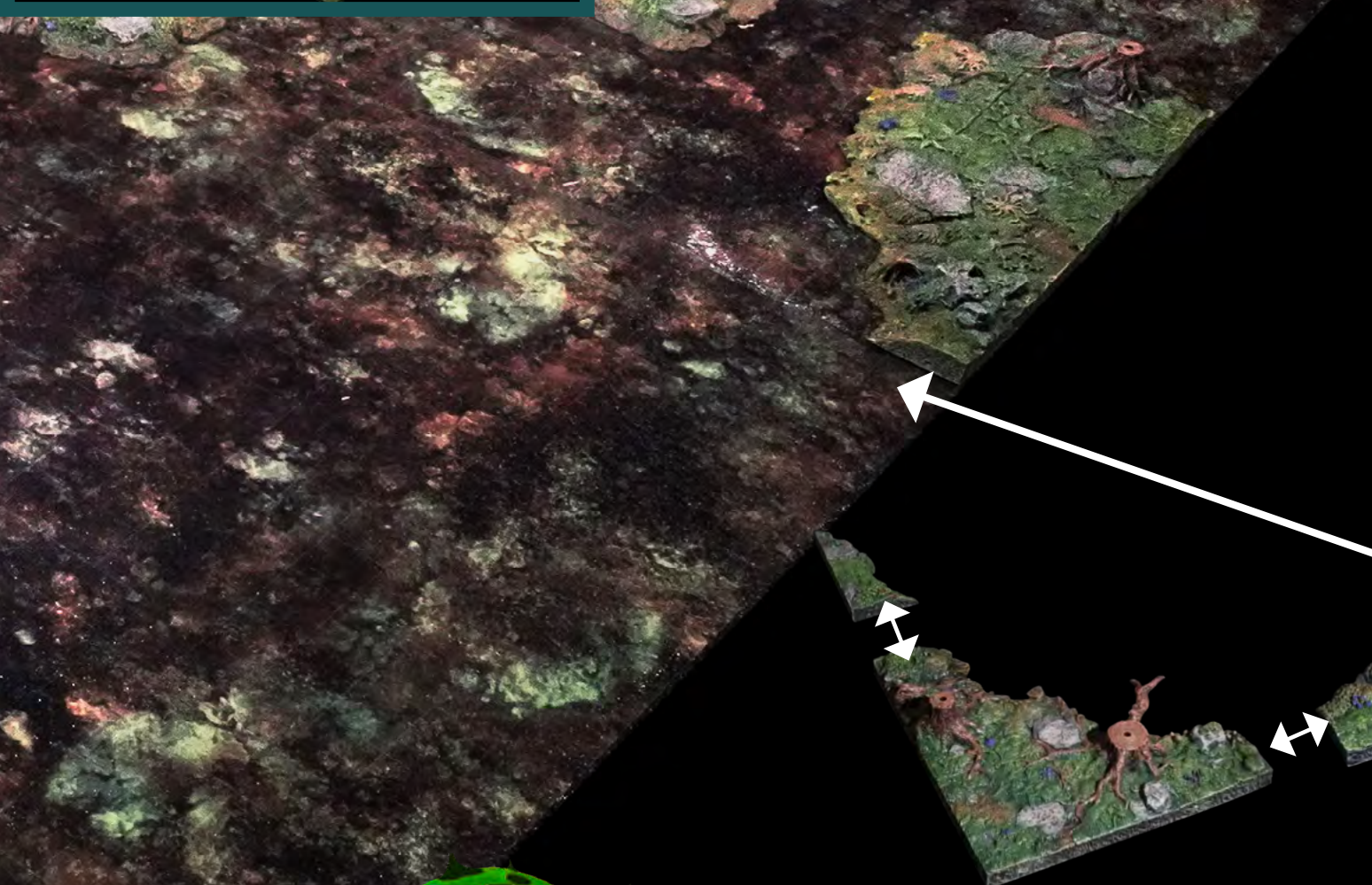
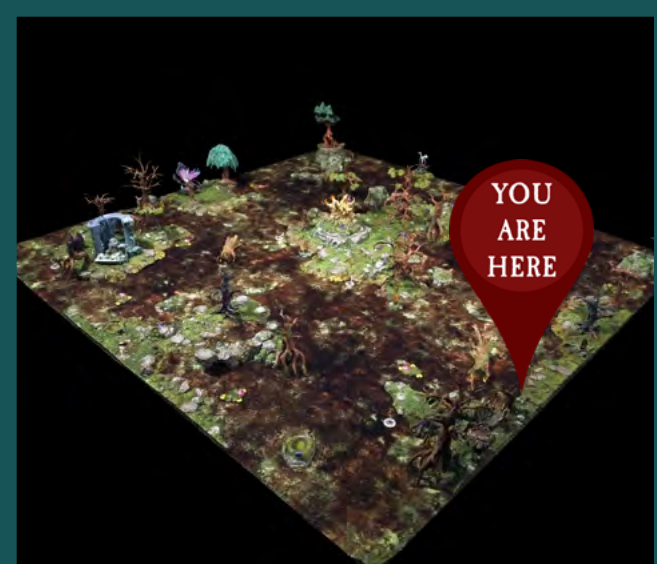


x1 - 3x3 Swamp Floor



x1 - Right Swell Swamp Bank

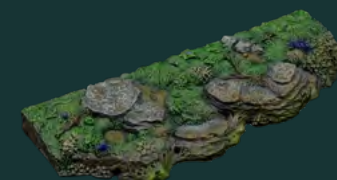




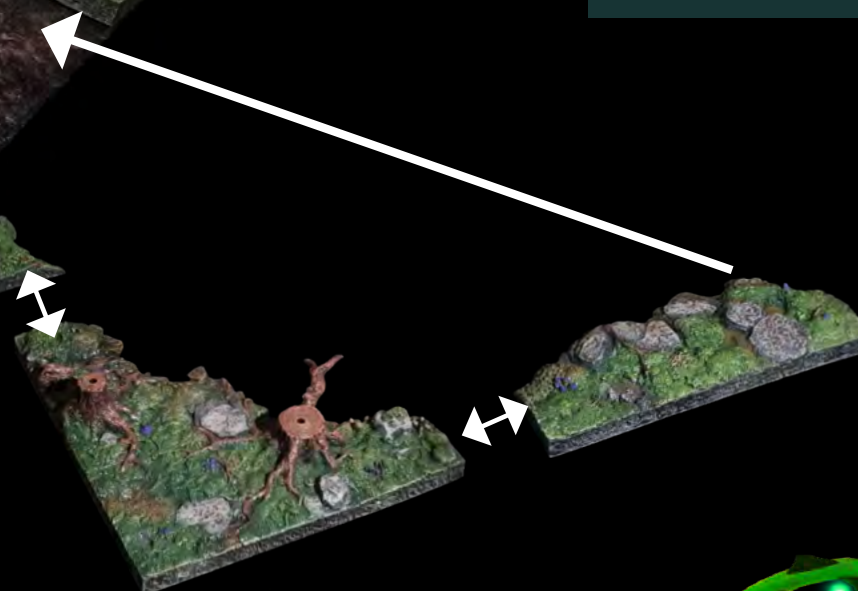
x1 - Forest Banks to Trifecta Transition - Right



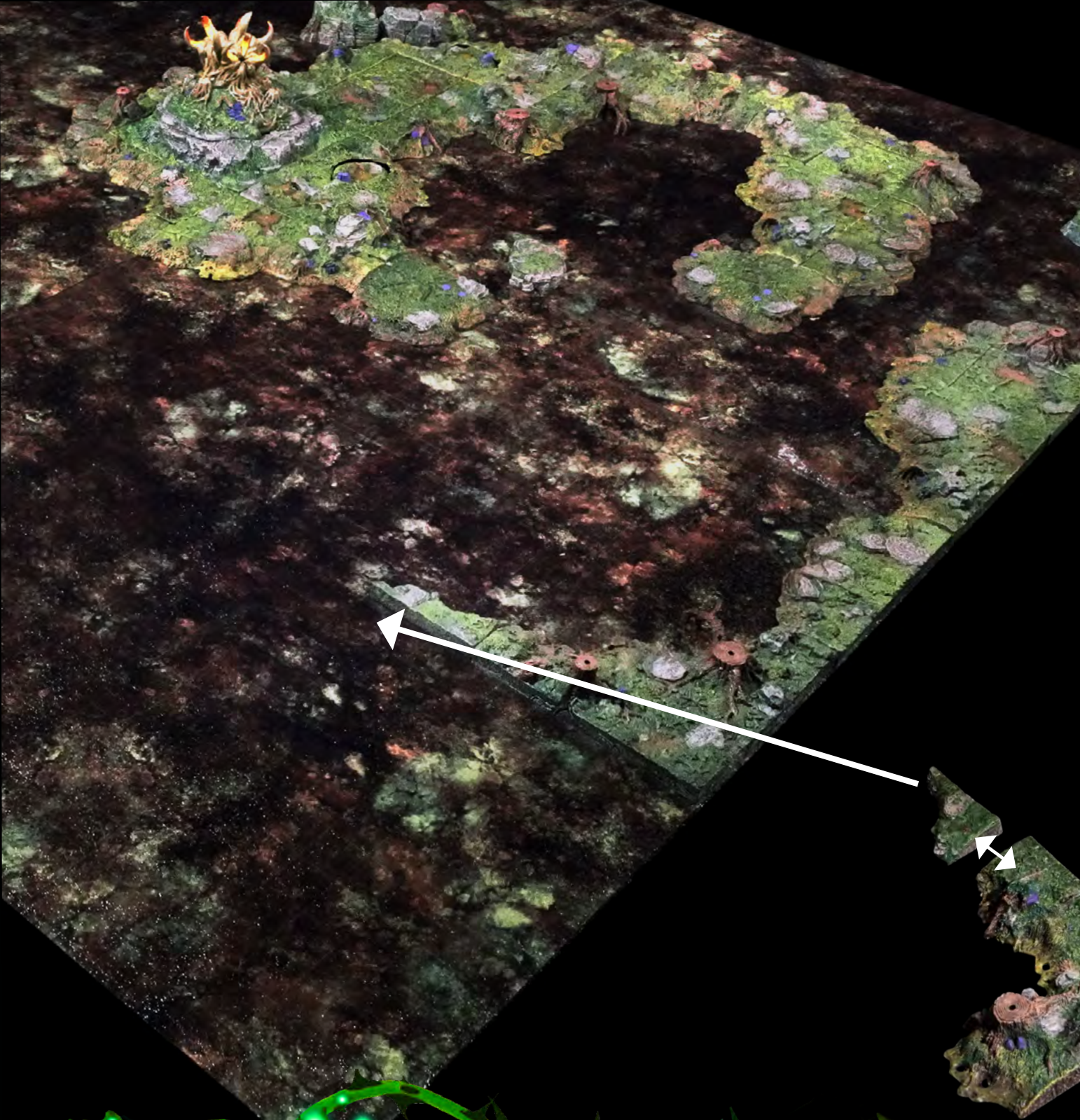
x1 - Concave Swamp Bank



x1 - Straight Swamp Bank







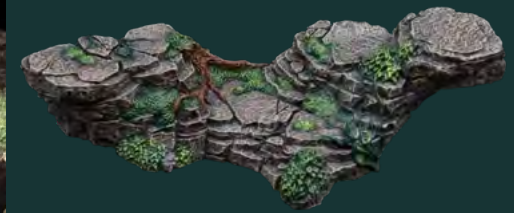
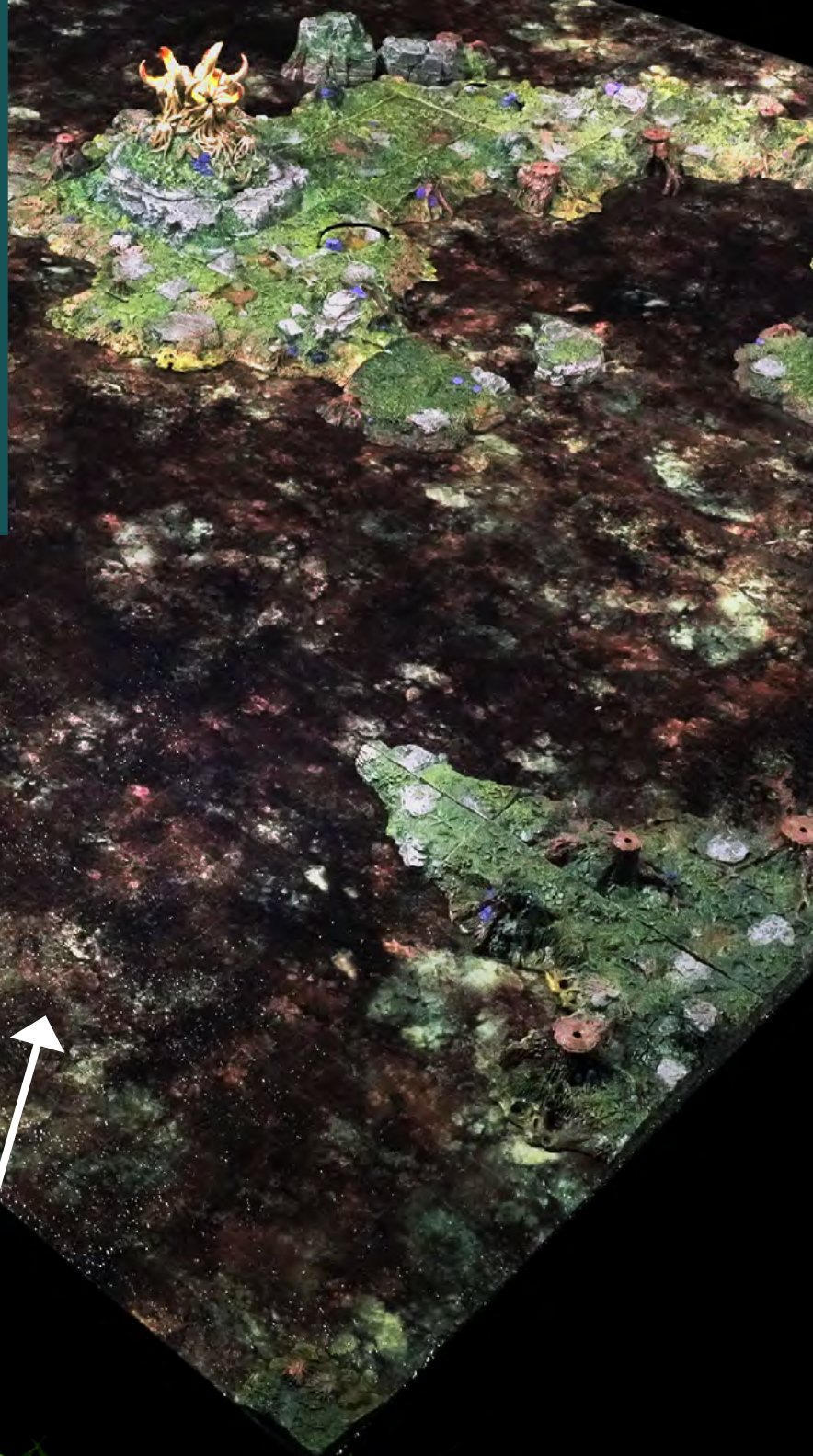
x1 - Forest Banks to Trifecta  
Transition - Left



x1 - Left Swell Swamp Bank



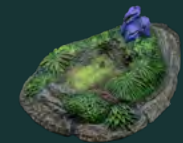




x1 - Crescent Rock

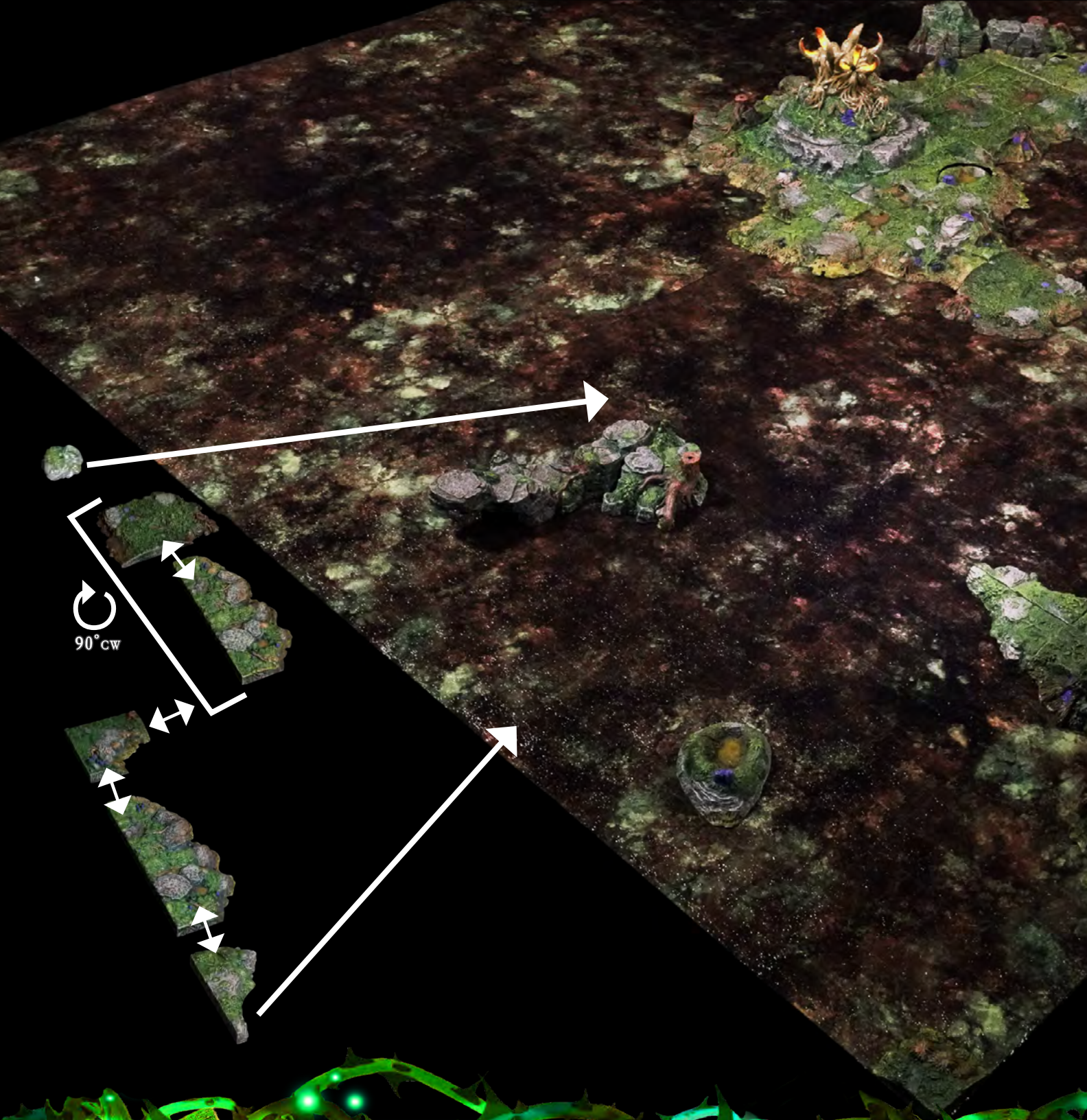


x1 - Small Swamp Stump



x1 - Swamp Pool -  
Teardrop Insert

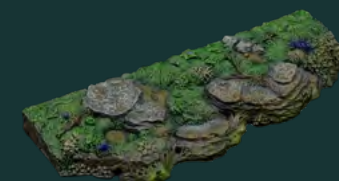




x1 - Mossy Rock Mound



x1 - End Cap Swamp Bank



x2 - Straight Swamp Bank

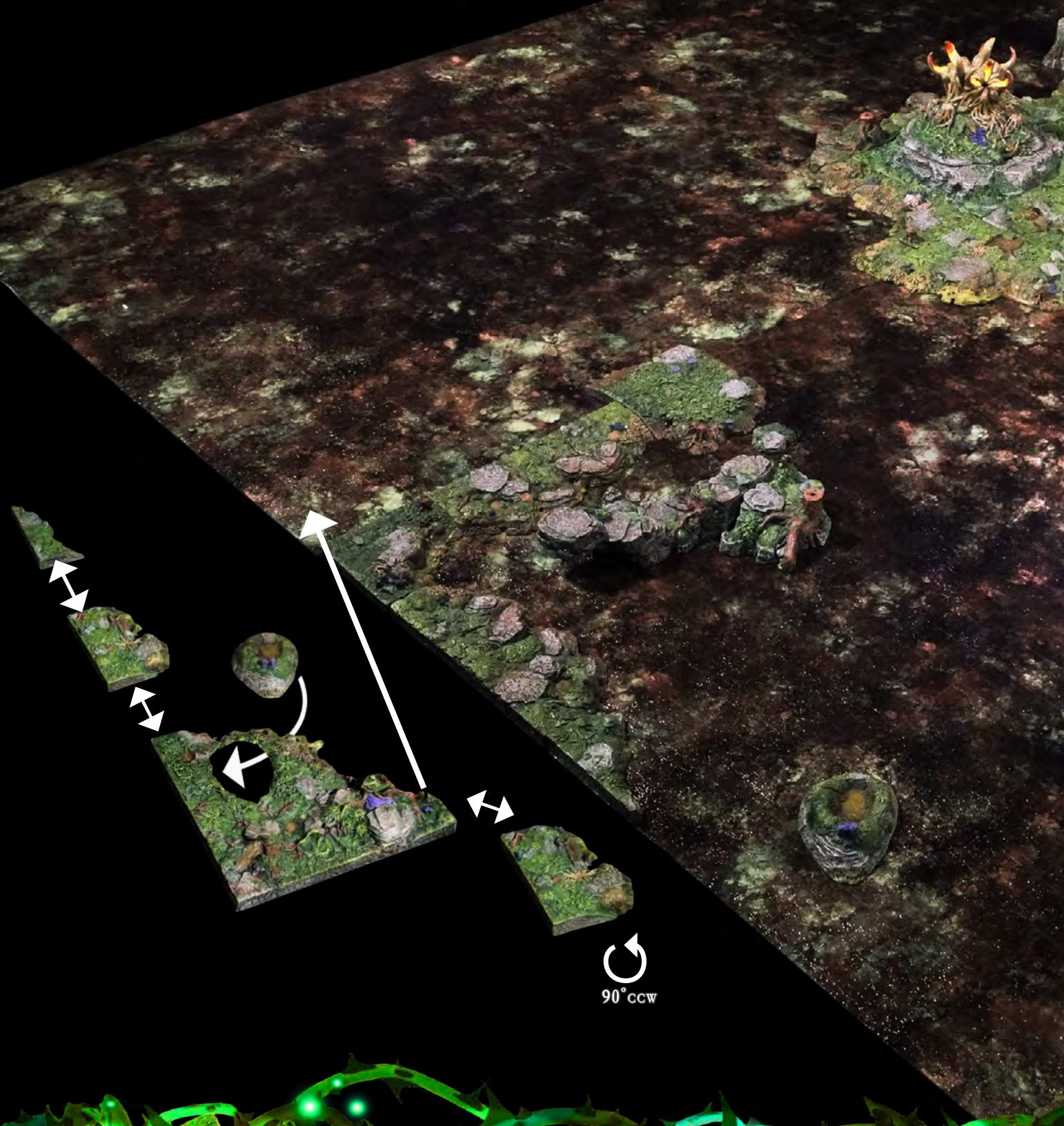


x1 - Short Concave Swamp Bank



x1 - Forest Banks to Trifecta Transition - Left

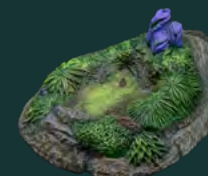




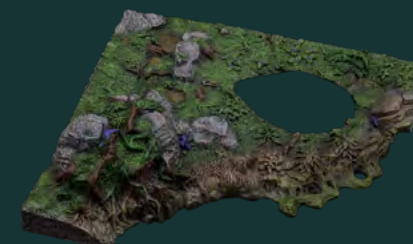
x1 - Forest Banks to Trifecta  
Transition - Right



x2 - Short Straight  
Swamp Bank



x1 - Swamp Pool -  
Teardrop Insert



x1 - Diagonal Swamp Bank

90° CCW



YOU  
ARE  
HERE



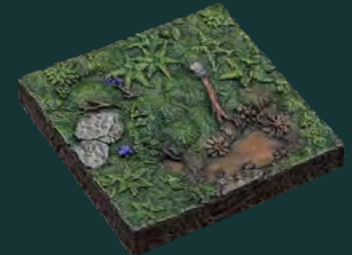
x1 - Short Concave  
Swamp Bank



x1 - Short Straight Swamp  
Bank Bank



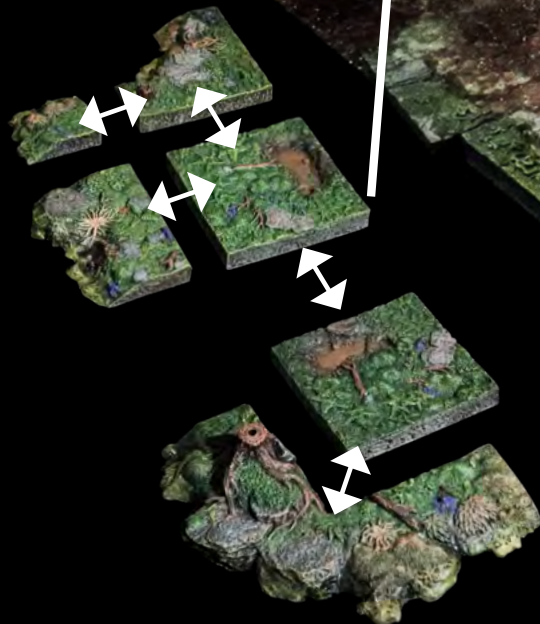
x1 - Short Convex  
Swamp Bank



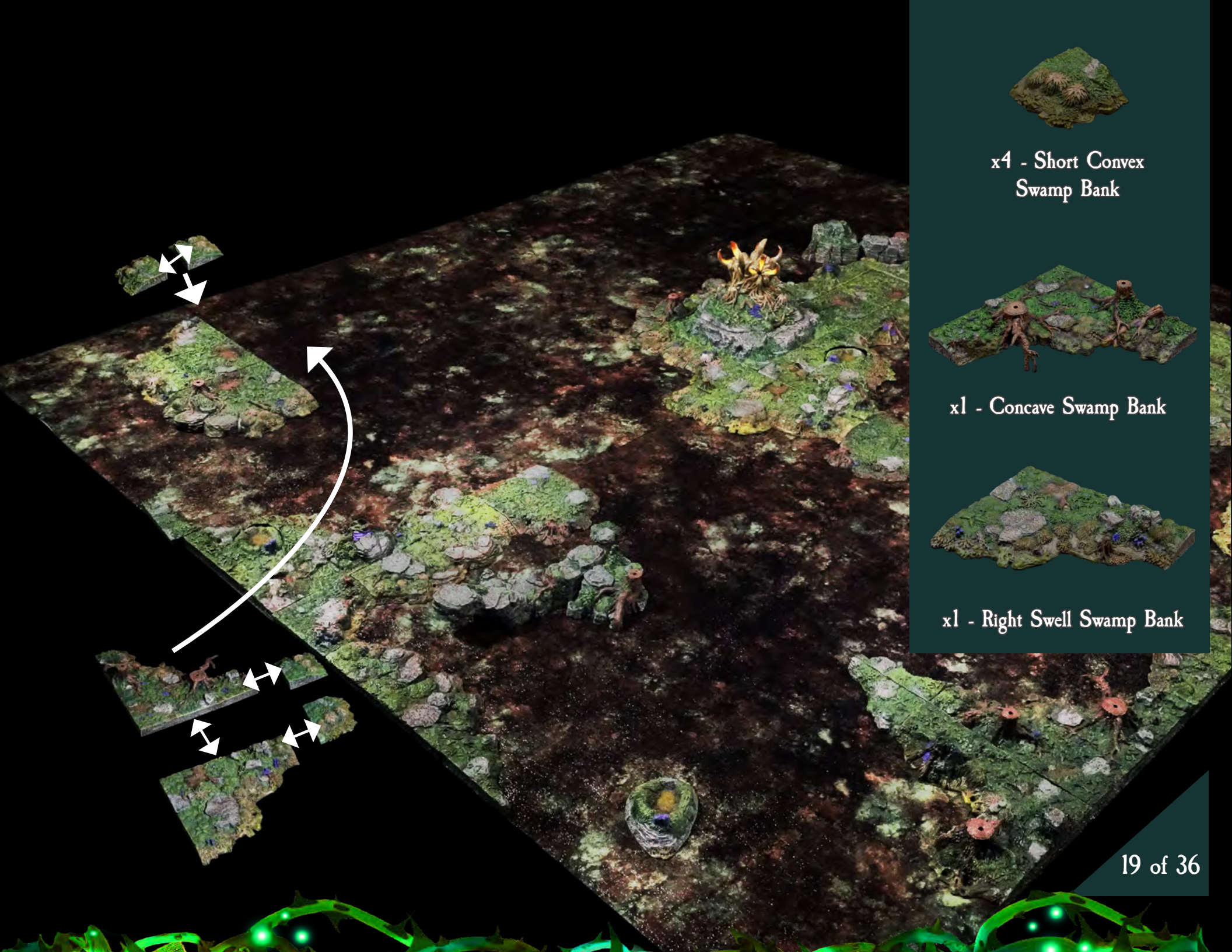
x2 - 3x3 Swamp Floor



x1 - Convex Swamp Bank



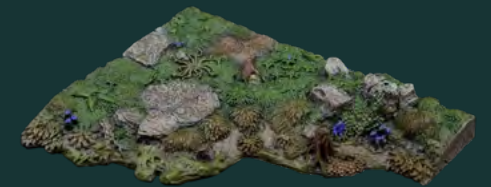




x4 - Short Convex  
Swamp Bank

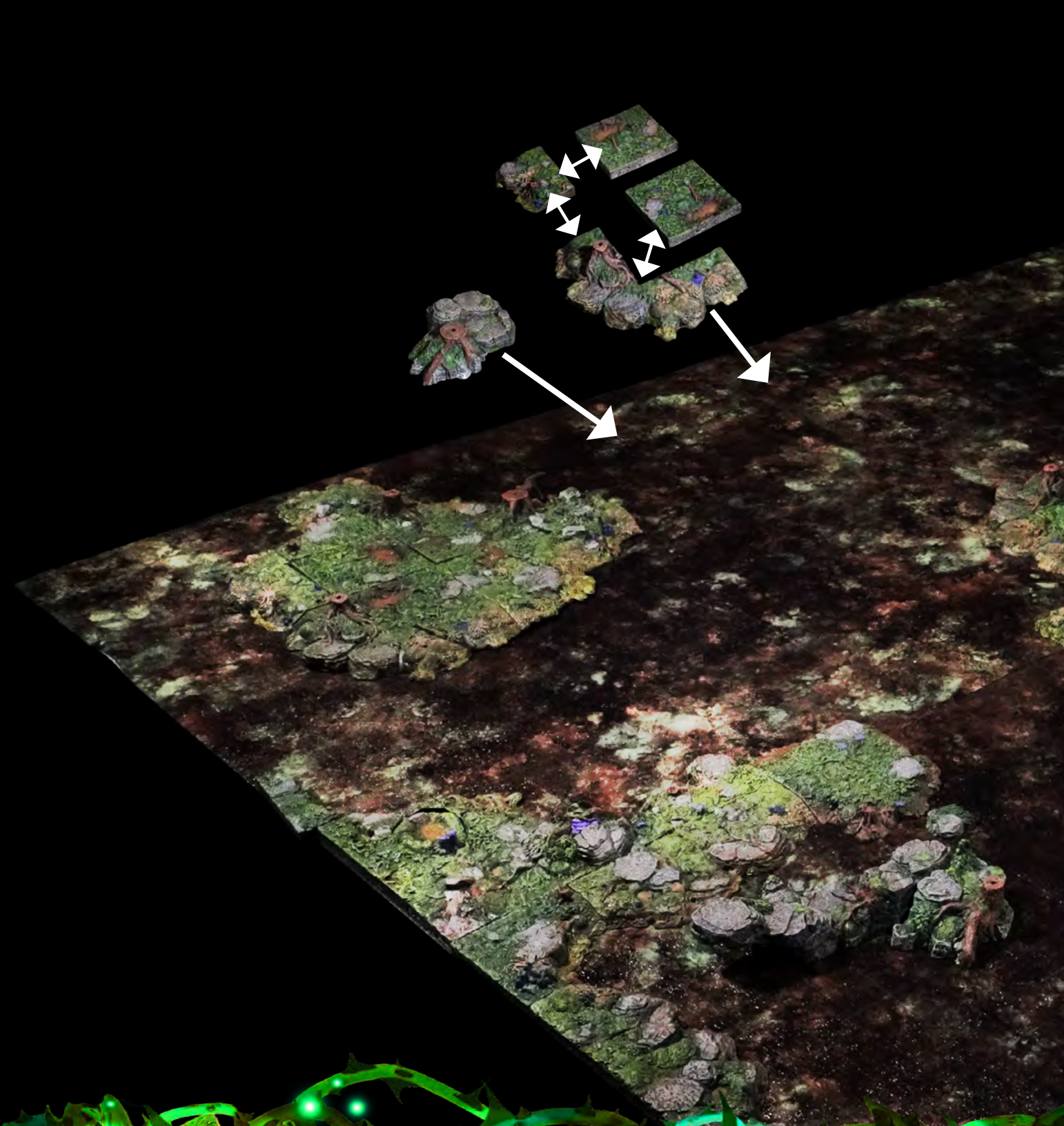


x1 - Concave Swamp Bank

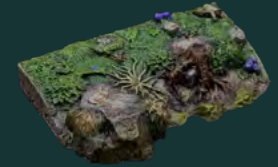


x1 - Right Swell Swamp Bank





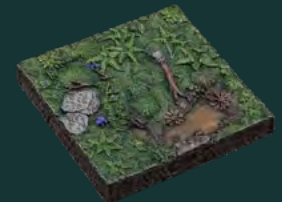
x1 - Large Swamp Stump



x1 - Short Straight Swamp Bank

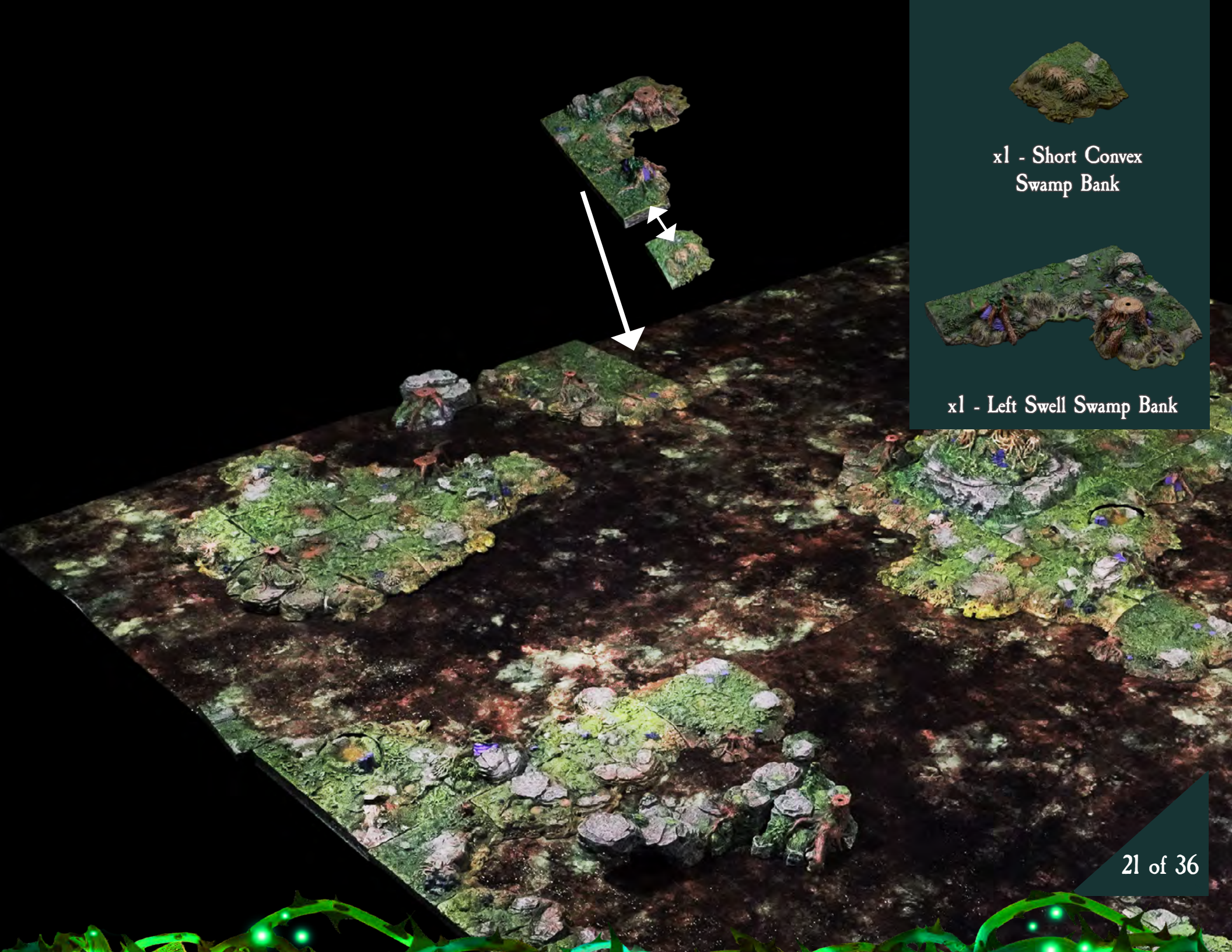


x1 - Convex Swamp Bank



x2 - 3x3 Swamp Floor





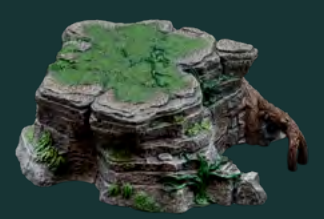
x1 - Short Convex  
Swamp Bank



x1 - Left Swell Swamp Bank



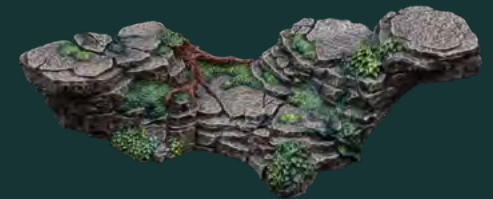
YOU  
ARE  
HERE



x1 - Titanstooth Base



x1 - Stepped Rock

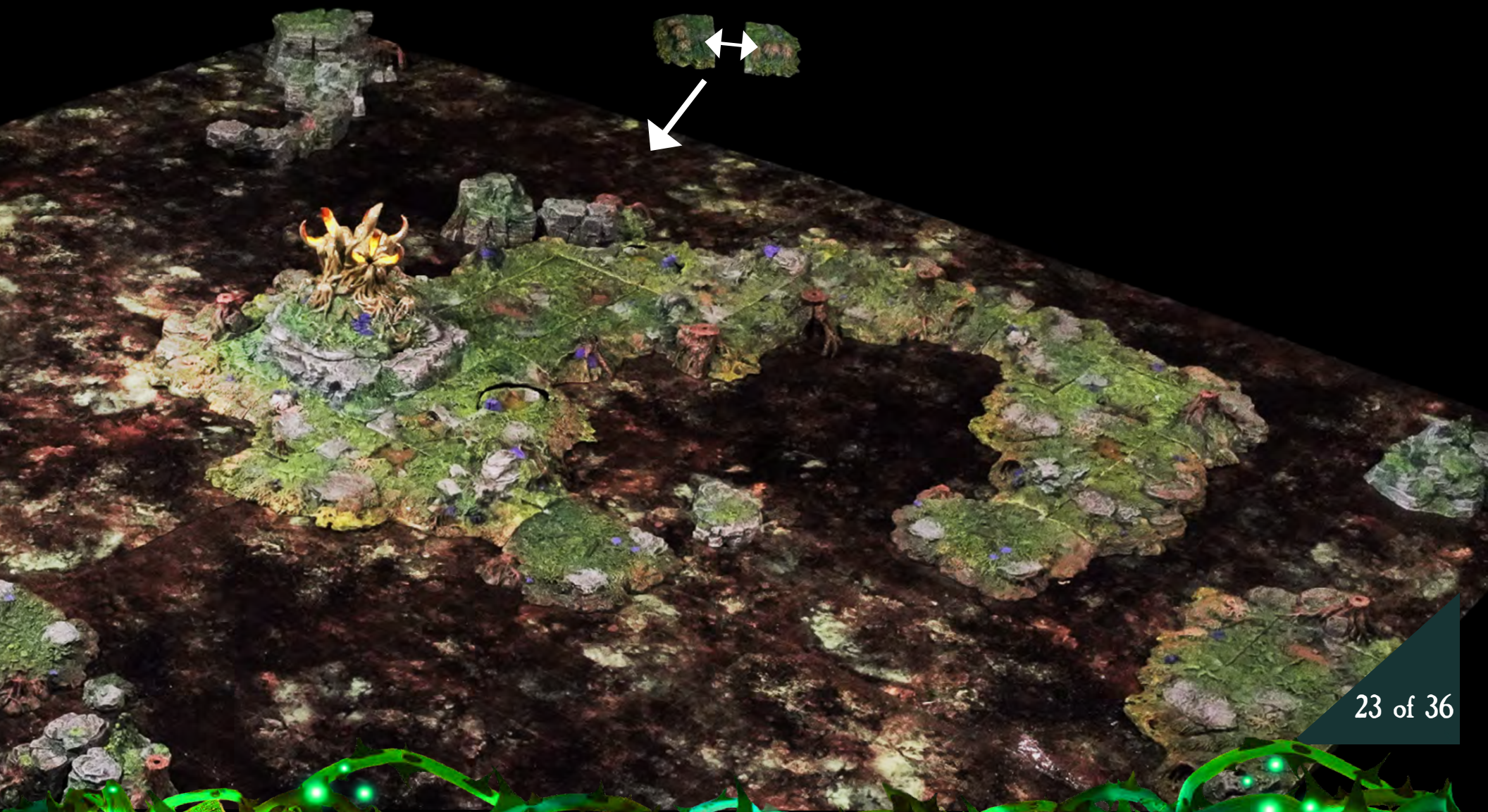


x1 - Crescent Rock





x2 - Short Convex  
Swamp Bank







x1 - Flat-faced Boulder -  
Magnetic



x1 - Seal of Binding -  
Magnetic Accessory



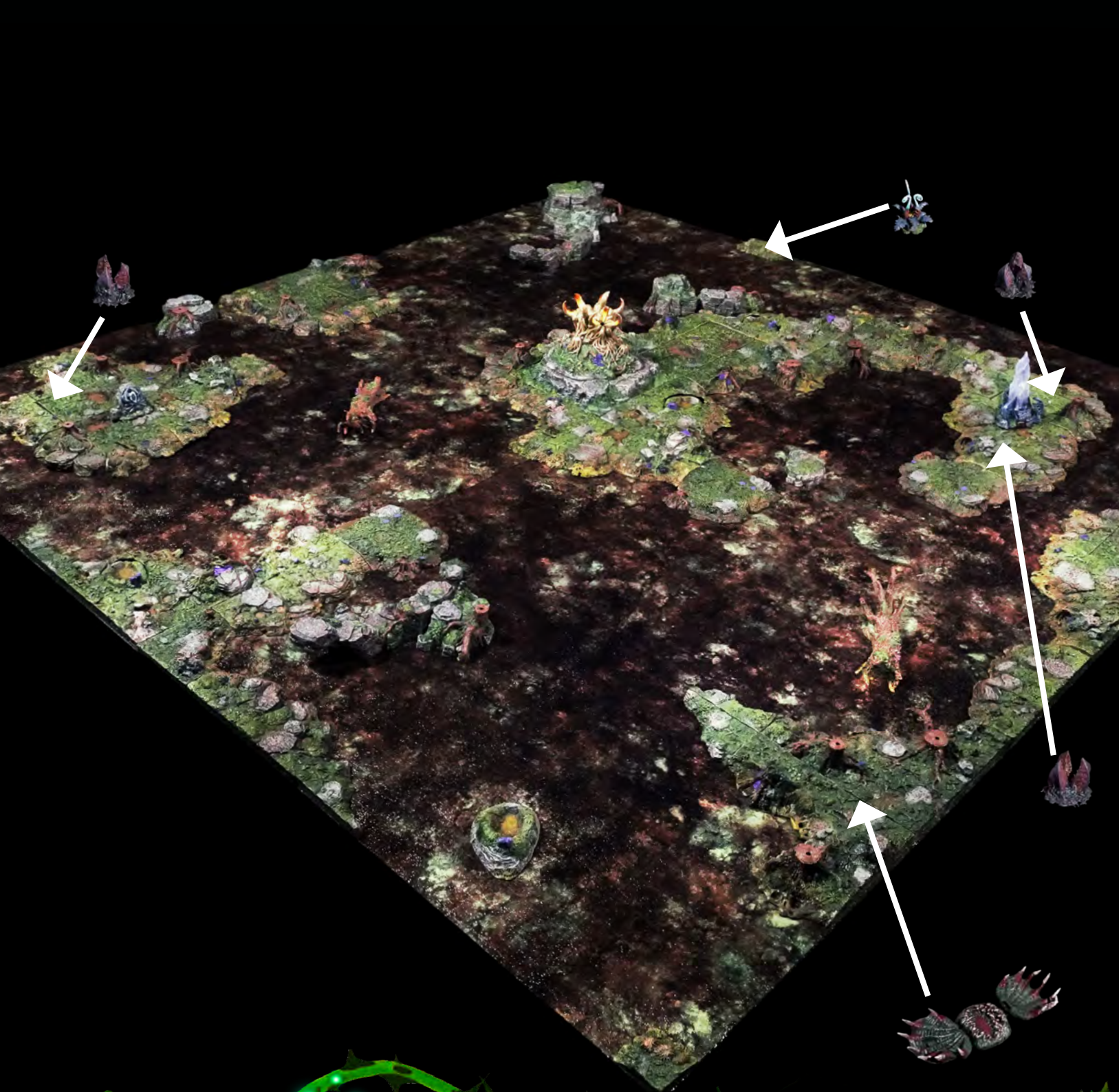
x2 - Floating Log



x1 - LED Planar Pylon  
(includes remote control)







x3 - Sorrownest

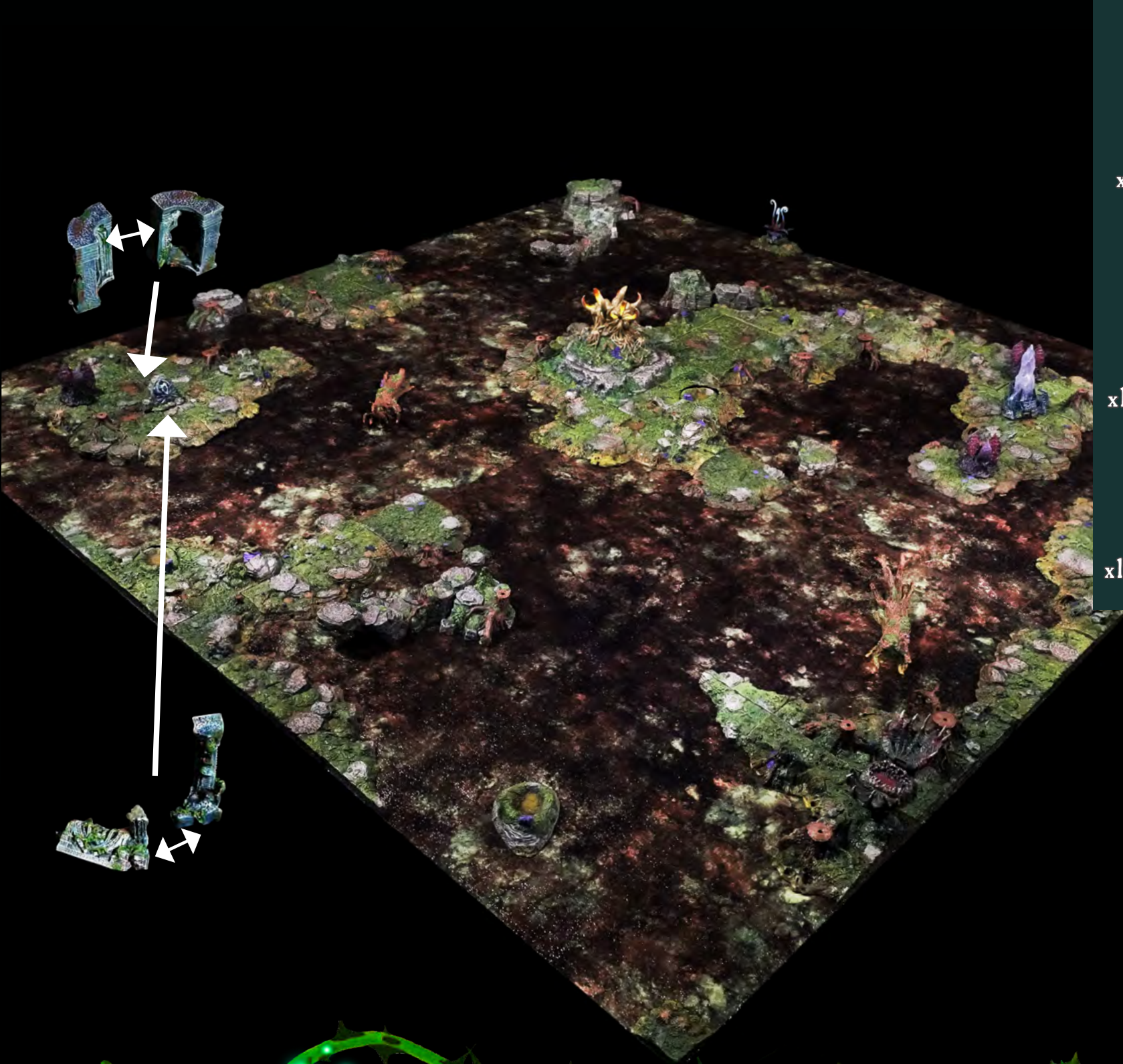


x1 - Shimmerfrond



x1 - Bonebloom





x2 - Archaean Arch Corner

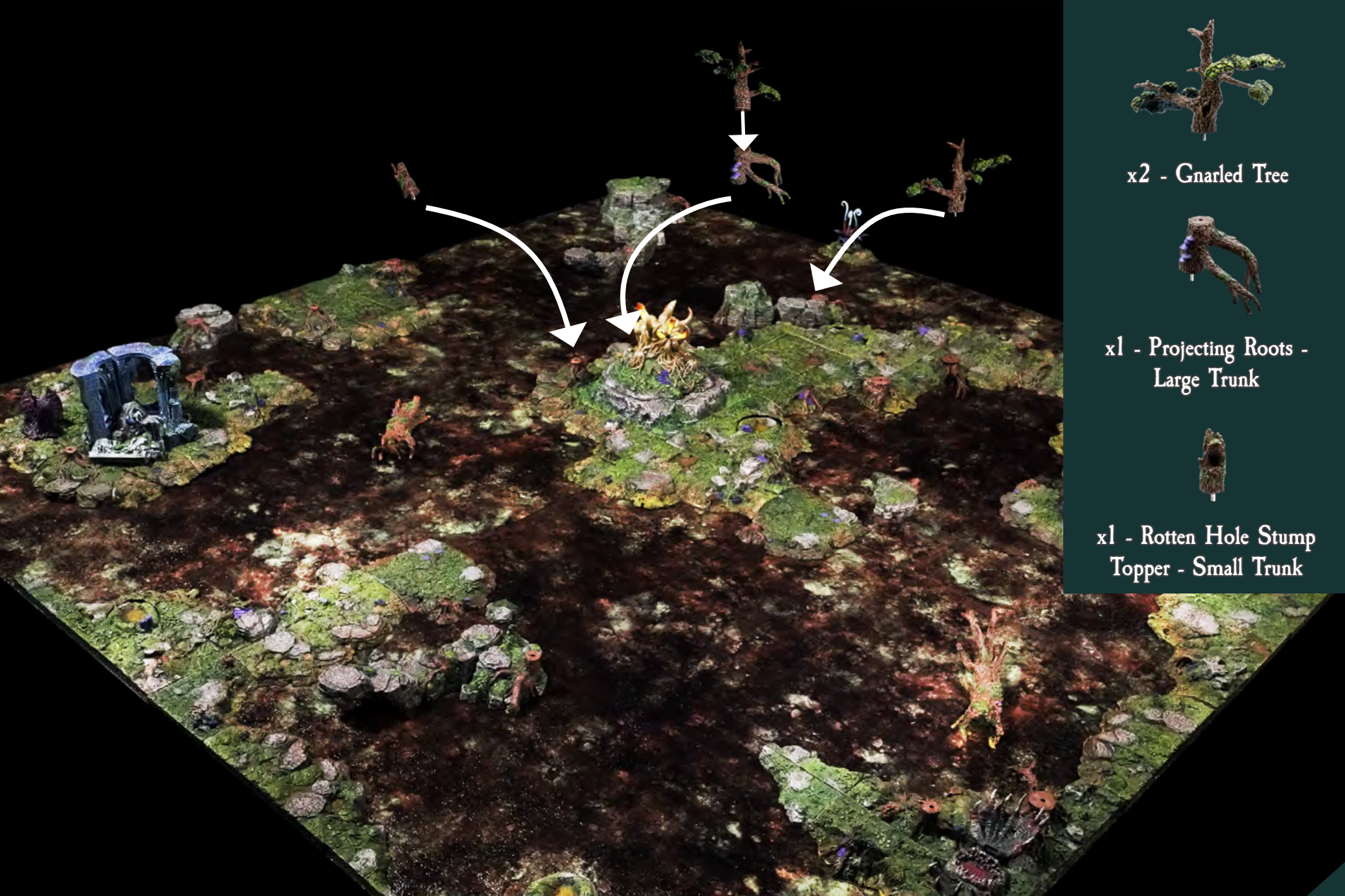


x1 - Crumbling Arch Corner



x1 - Collapsed Archaean Arch





x2 - Gnarled Tree



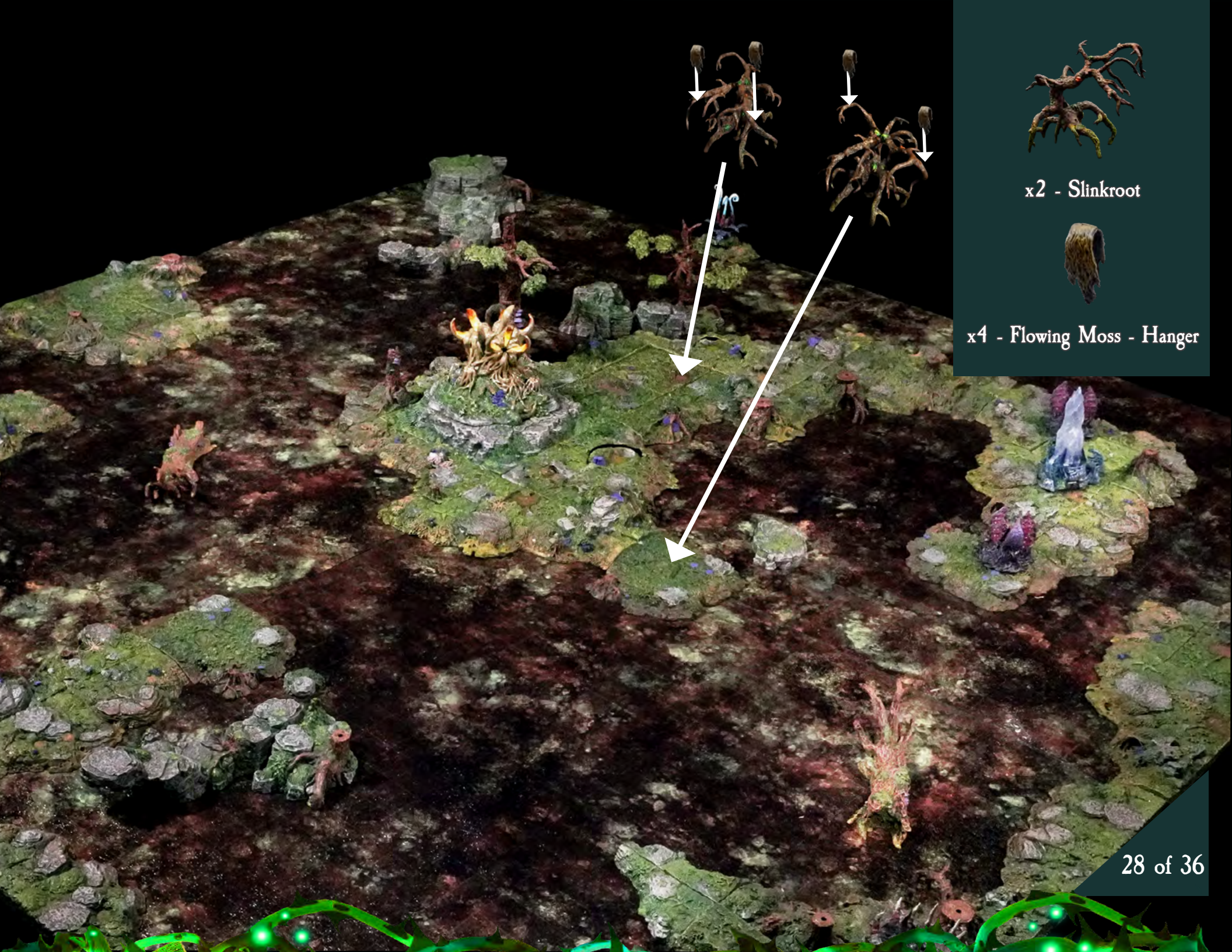
x1 - Projecting Roots -  
Large Trunk



x1 - Rotten Hole Stump  
Topper - Small Trunk

The Gnarled Tree paired with the Projecting Roots - Large Trunk plugs into the large trunk of the Left Swell Swamp Bank from page 4 (located behind the Spreading Sporeclaw - Fogger Cover in this image).





x2 - Slinkroot



x4 - Flowing Moss - Hanger





x2 - Creepy Branch Stump  
Topper - Large Trunk



x1 - Projecting Roots -  
Large Trunk



x1 - Dead Tree -  
Small Trunk



x1 - Projecting Roots -  
Small Trunk





x1 - Rotten Hole Stump  
Topper - Small Trunk



x1 - Dead Snag  
Stump Topper



x1 - Dead Tree -  
Small Trunk



x1 - Blackrot Tree





x1 - Blackrot Tree



x1 - Dead Snag  
Stump Topper



x1 - Projecting Roots -  
Small Trunk



x2 - Flowing Moss -  
Hanger



x1 - Dead Tree -  
Large Trunk



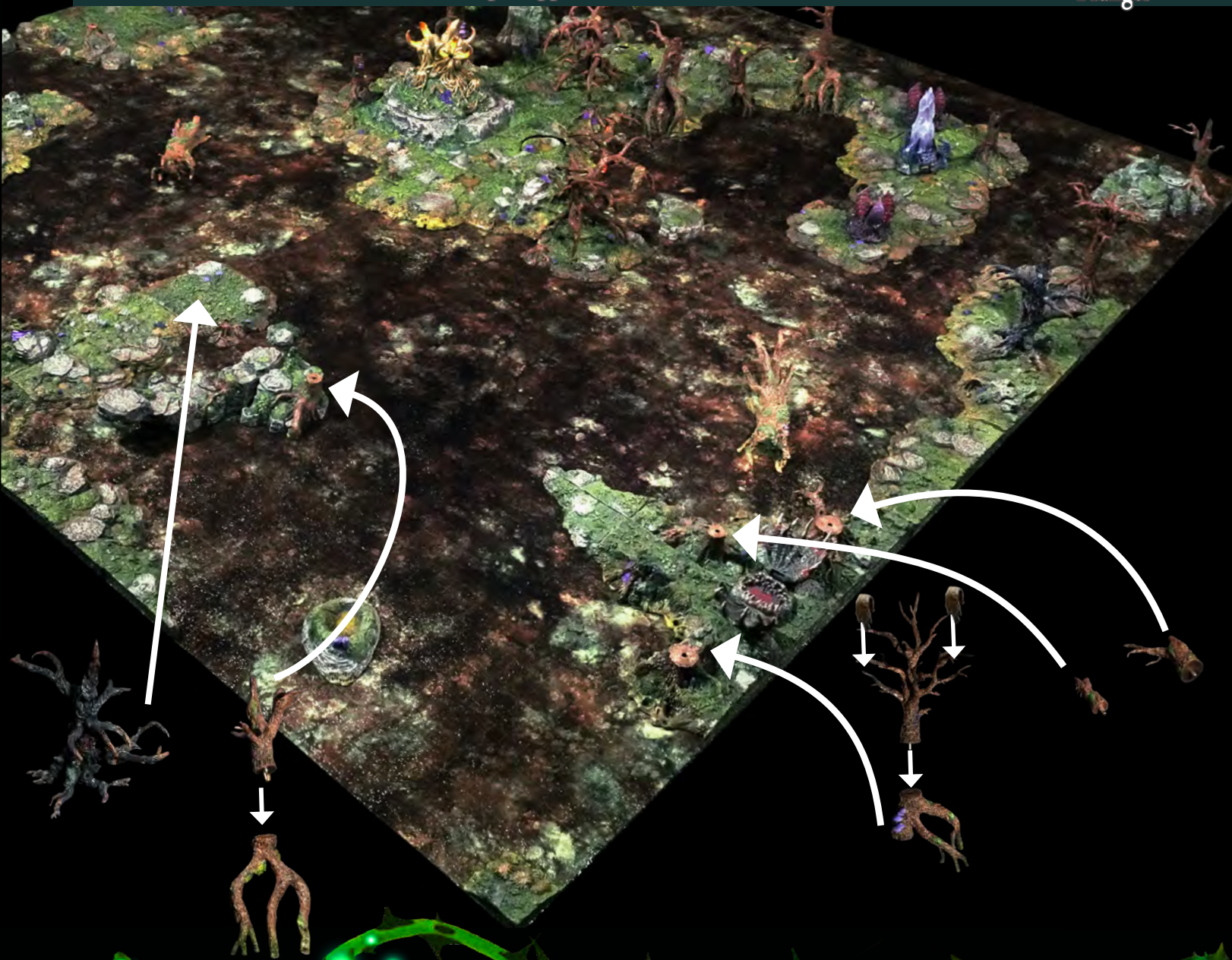
x1 - Projecting Roots -  
Large Trunk



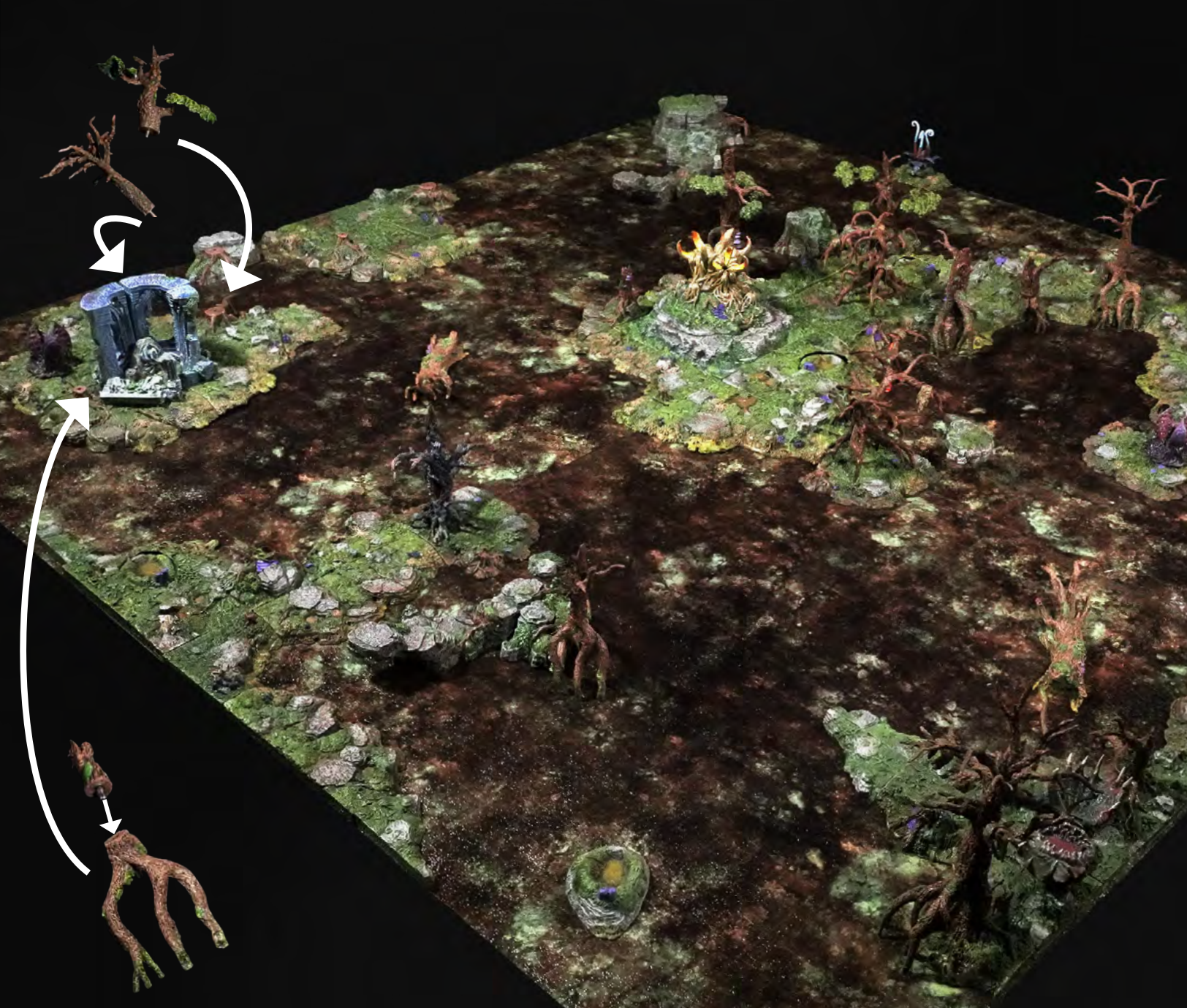
x1 - Rotten Hole Stump  
Topper - Small Trunk



x1 - Creepy Branch Stump  
Topper - Large Trunk







x1 - Gnarled Tree



x1 - Dead Tree -  
Small Trunk



x1 - Rotten Hole Stump  
Topper - Small Trunk



x1 - Projecting Roots -  
Small Trunk

The Dead Tree - Small Trunk plugs into the small trunk of the Concave Swamp Bank from page 19 (same Bank the Gnarled Tree plugs into in this step).









x5 - Grasping  
Skeletal Hand



x7 - Tiny  
Hummock



x4 - Sorrownest  
Bulbpod



x5 - Mephit-Reed



x5 - Mossy  
Rock Mound



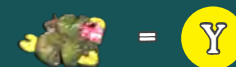
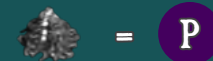
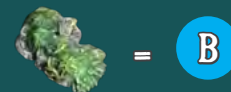
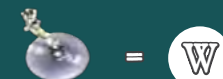
x5 - Viscilid



x7 - Lily  
Pad Cluster



### PIECE KEY



Match the color-coordinated icons on the build with the piece key to the left. These are suggested placements, feel free to customize the flavor of your build to suit your adventure.





CONGRATULATIONS! YOU'VE TRAVERSED  
◆ SORROW ISLE ◆



## - BONUS PIECES -

These are the pieces left over after you've completed the Sorrow Isle build. Feel free to add them to your build for extra detail or flavor.



x1 - Bayou Barge Prow  
- LED Socket



x1 - Bayou  
Barge Mid



x1 - Bayou  
Barge Aft



x1 - Gator Skull



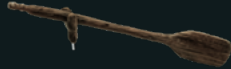
x2 - Harpoon  
Launcher



x1 - Reality Rupture -  
Magnetic Accessory



x1 - LED Balefire  
Lantern



x4 - Oar



x1 - Tiller



x1 - Swamp Basilisk



x2 - Short Convex  
Swamp Bank



x2 - Lily  
Pad Cluster



x1 - Grasping  
Skeletal Hand



x6 - Flowing Moss -  
Hanger



x2 - Sorrownest  
Bulbpod



x1 - Mephit-Reed



x1 - Viscilid

## - NON-TERRAIN -

INCLUDED WITH SORROW ISLE & WILDLANDS UNTAMED KICKSTARTER PLEDGES



x1 - Wildlands Backer Tote



x1 - DF x Die Hard Dice  
Swamp Horizon Die



x1 - Archaean Compass