

ENCOUNTER 15 BUILD GUIDE

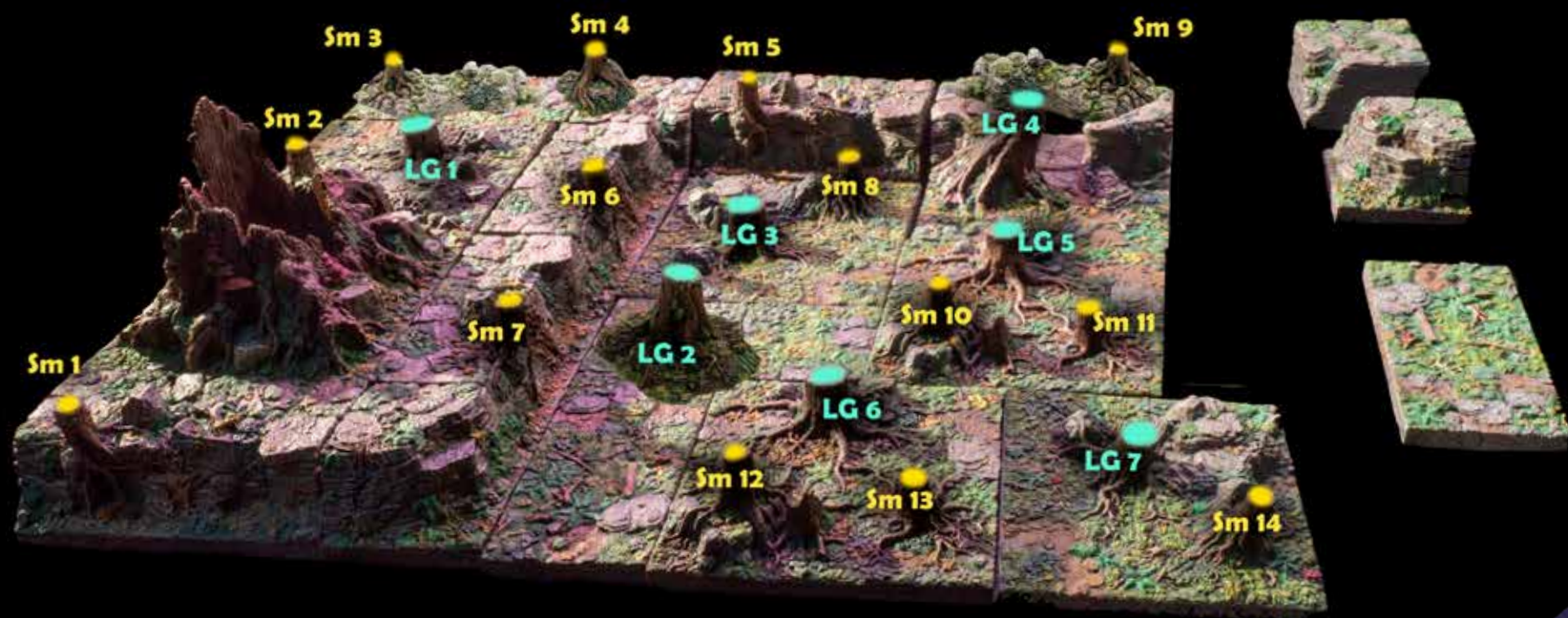
◆ DREADHOLLOW FOREST ◆



CAVERNS
DEEP

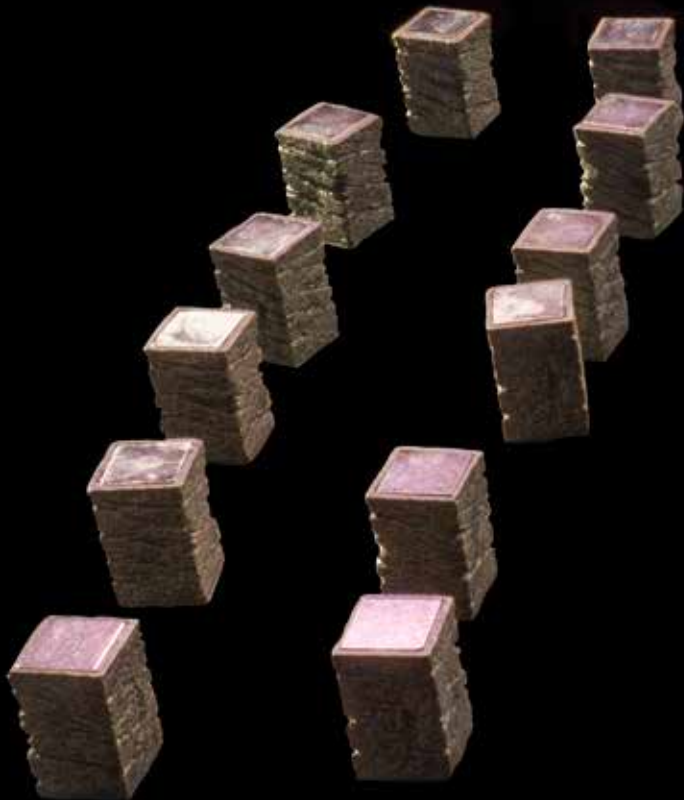
◆ Dreadhollow Forest ◆

Before we begin, here's a handy stump map that was useful to the guide's creators. We thought it might help you too.



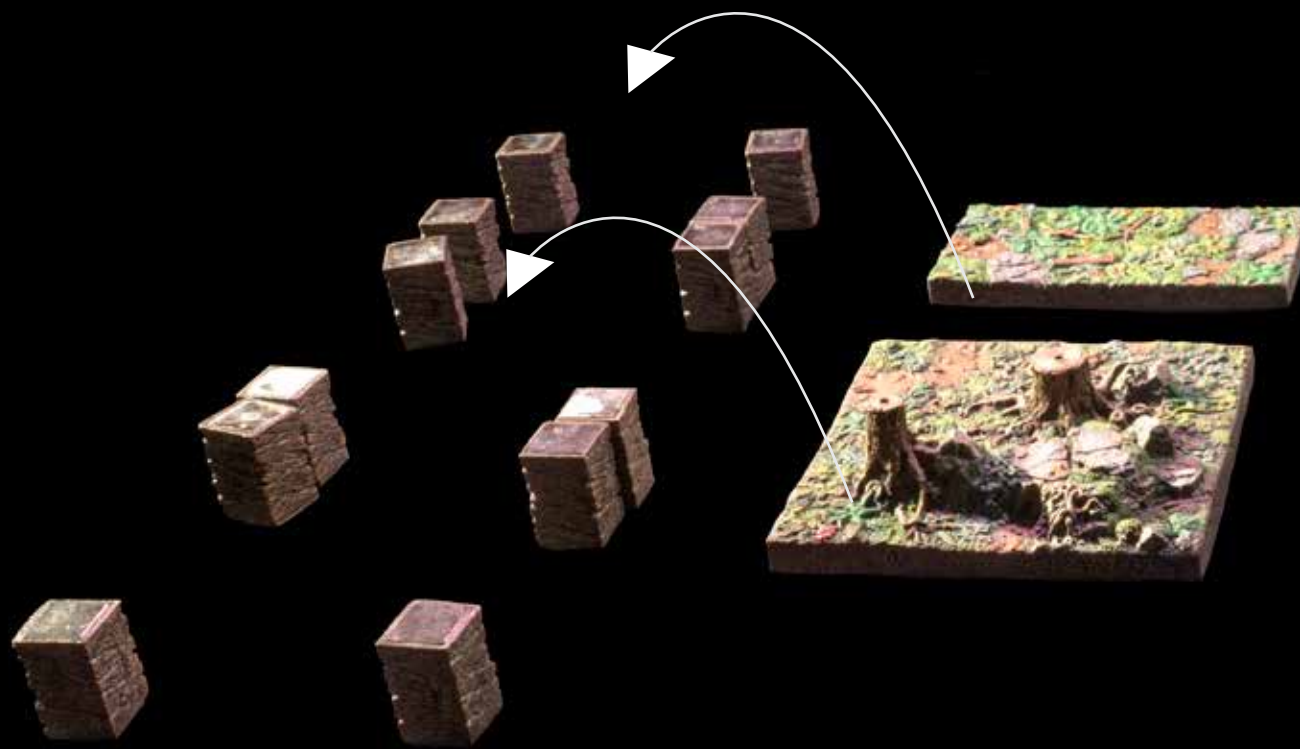
Key

◆ Dreadhollow Forest ◆



x12 - Caverns Stilt – 38mm

◆ Dreadhollow Forest ◆

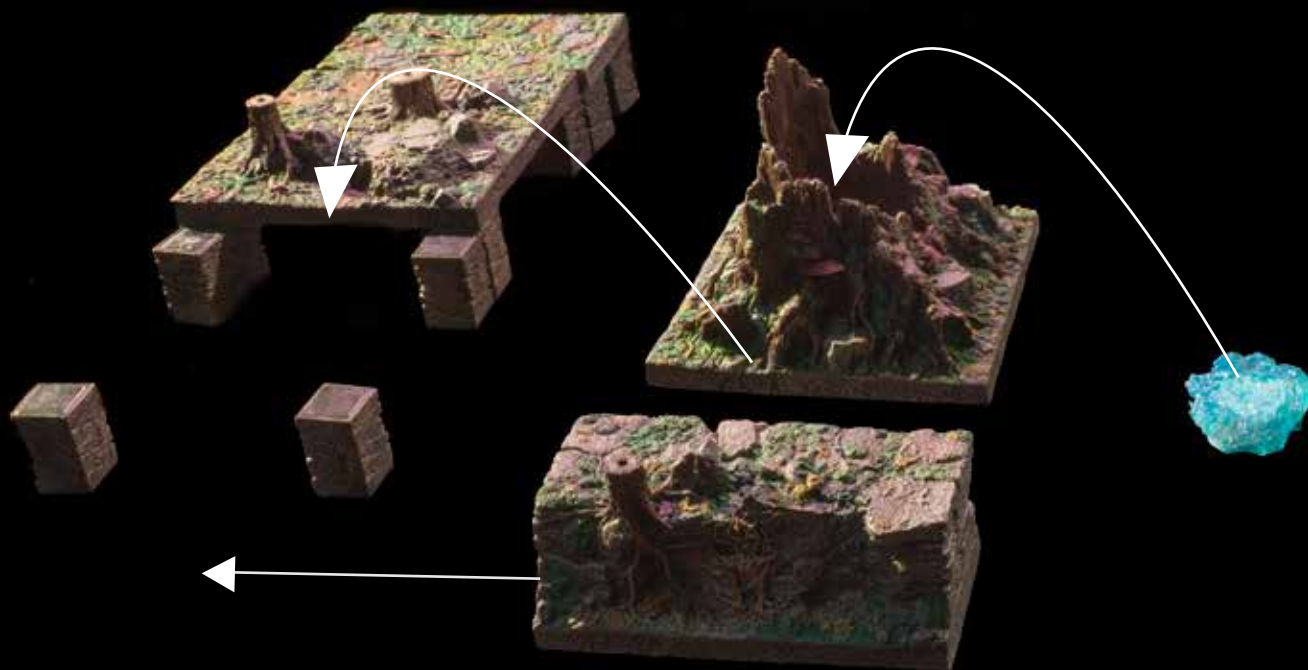


x1 - 6x3 Forest Floor – Clear



x1 - 6x6 Forest Floor – Medium Cover

◆ Dreadhollow Forest ◆



x1 - LED Spirit Tree insert

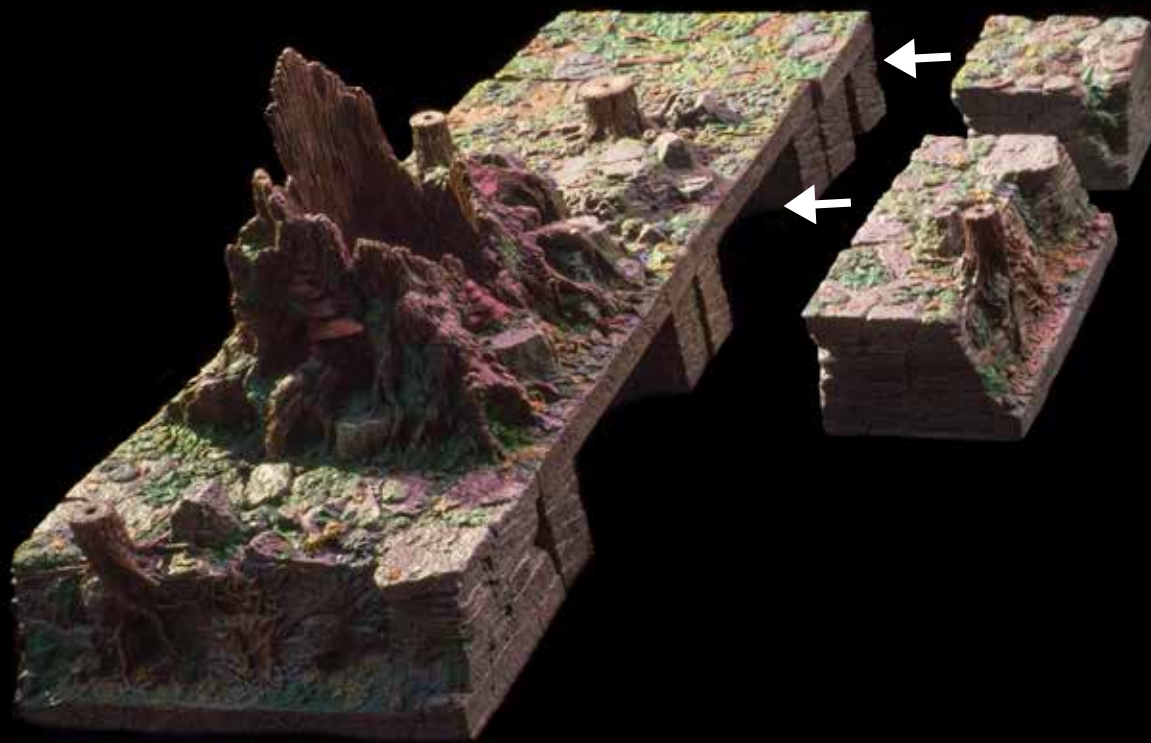


x1 - Spirit Tree



x1 - 6x3 Straight Escarpment

◆ Dreadhollow Forest ◆

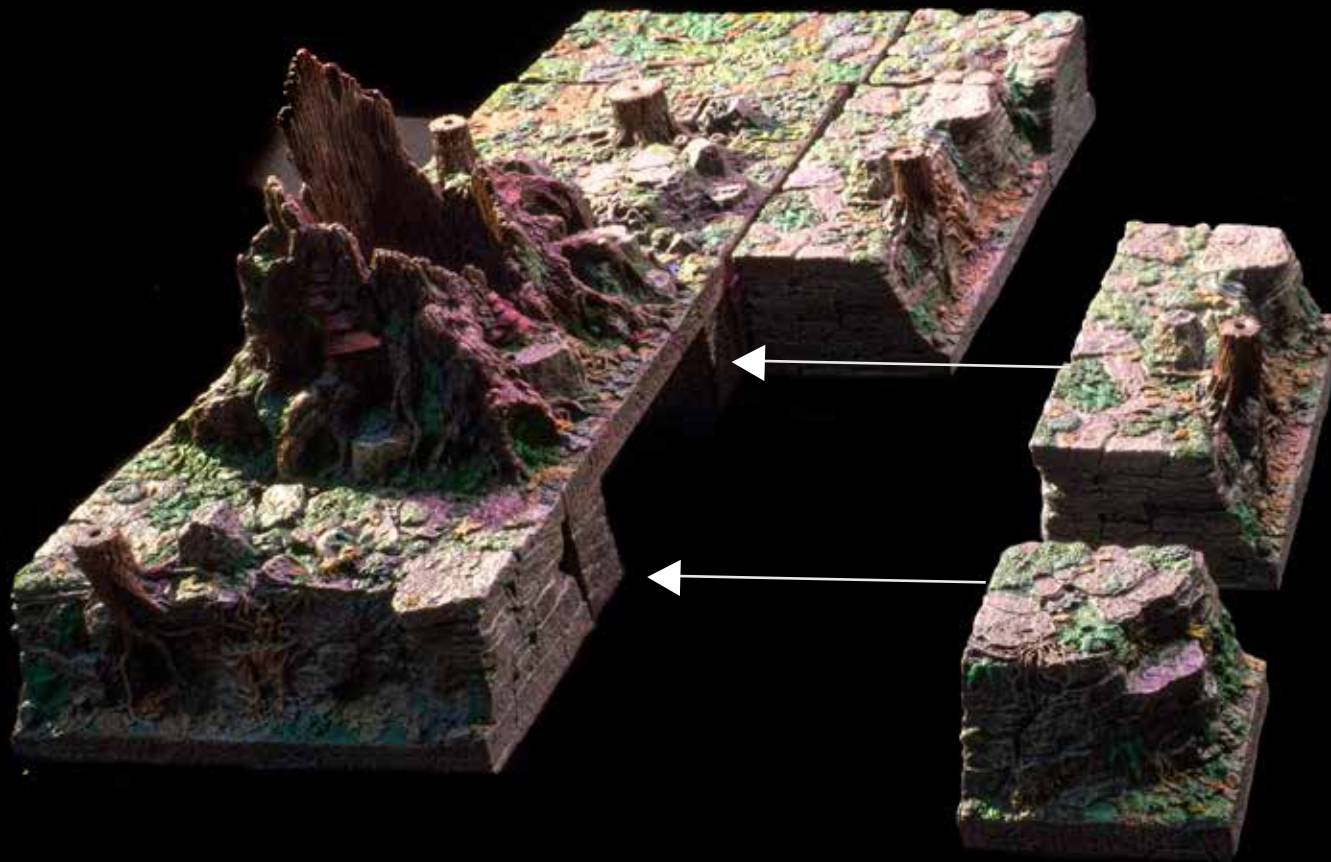


x1 - 6x3 Straight Escarpment



x1 - 3x3 Concave Escarpment

◆ Dreadhollow Forest ◆

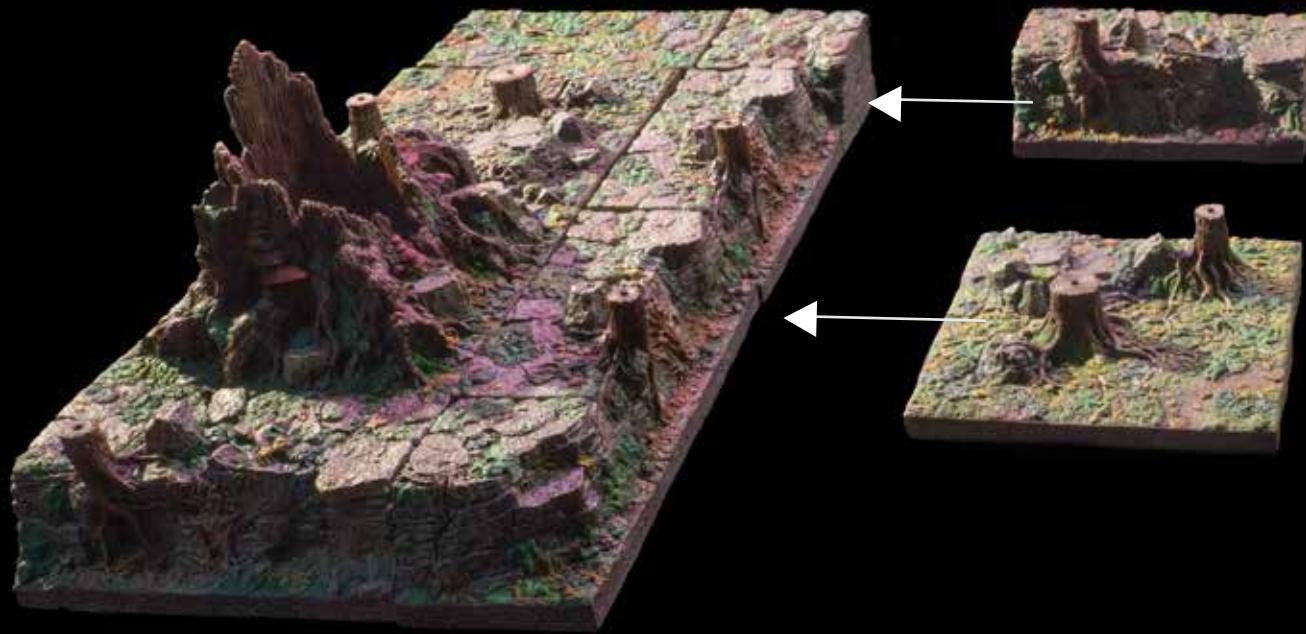


x1 - 6x3 Straight Escarpment



x1 - 3x3 Concave Escarpment

◆ Dreadhollow Forest ◆

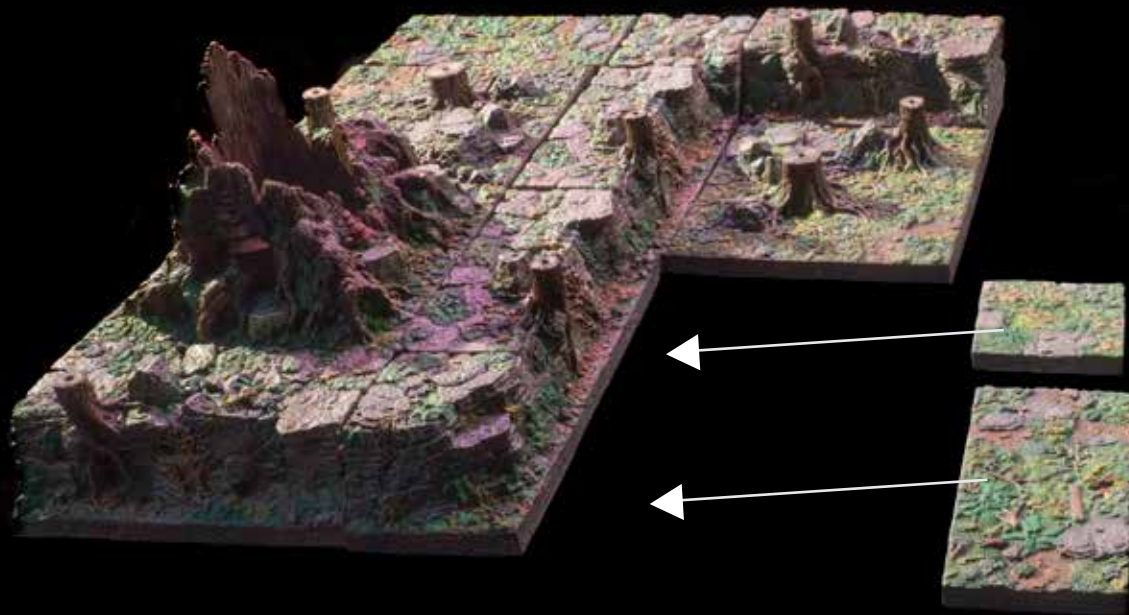


x1 - 6x3 Straight Escarpment



x1 - 6x6 Forest Floor – Medium Cover

◆ Dreadhollow Forest ◆

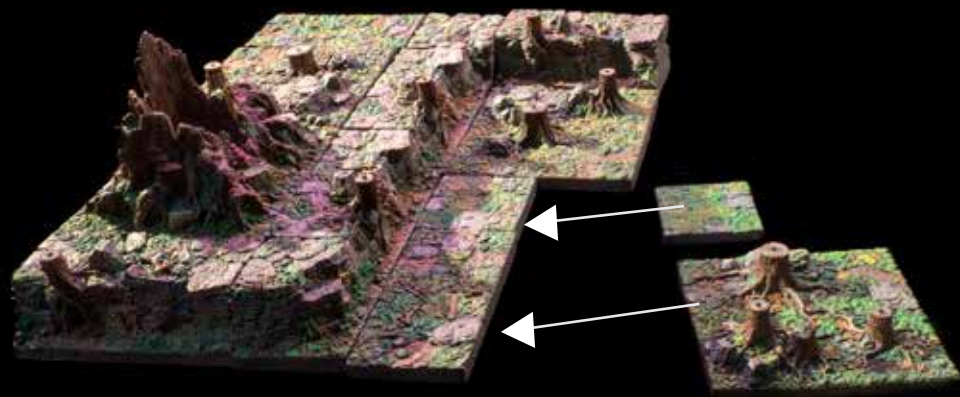


x1 - 3x3 Forest Floor — Clear



x1 - 6x3 Forest Floor — Clear

◆ Dreadhollow Forest ◆

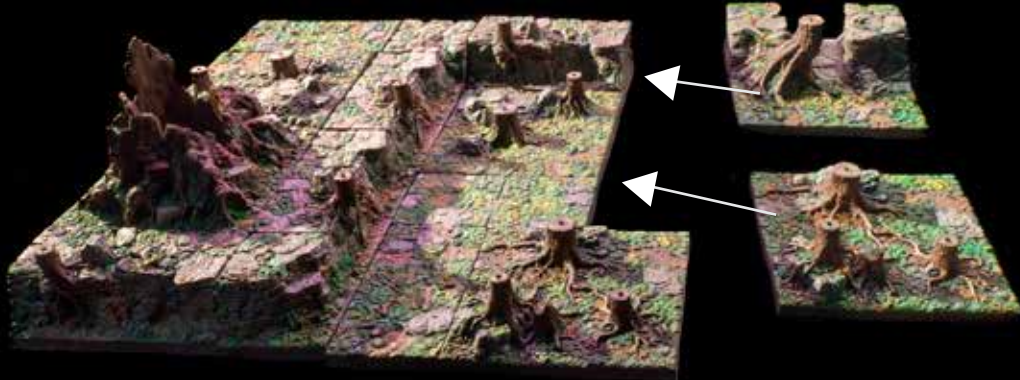


x1 - 3x3 Forest Floor – Clear



x1 - 6x6 Forest Floor – Heavy Cover

◆ Dreadhollow Forest ◆

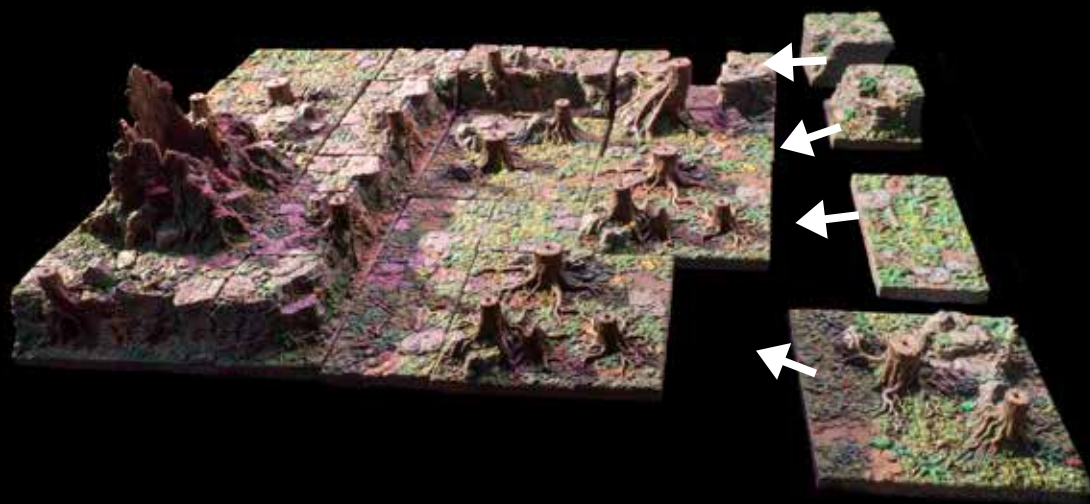


x1 - 6x6 Forest Floor – Heavy Cover



x1 - 6x6 Cave Mouth Escarpment

◆ Dreadhollow Forest ◆



x1 - 3x3 Convex Escarpment



x1 - 3x3 Concave Escarpment



x1 - 6x3 Forest Floor - Clear

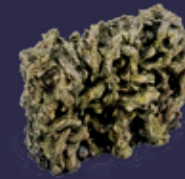
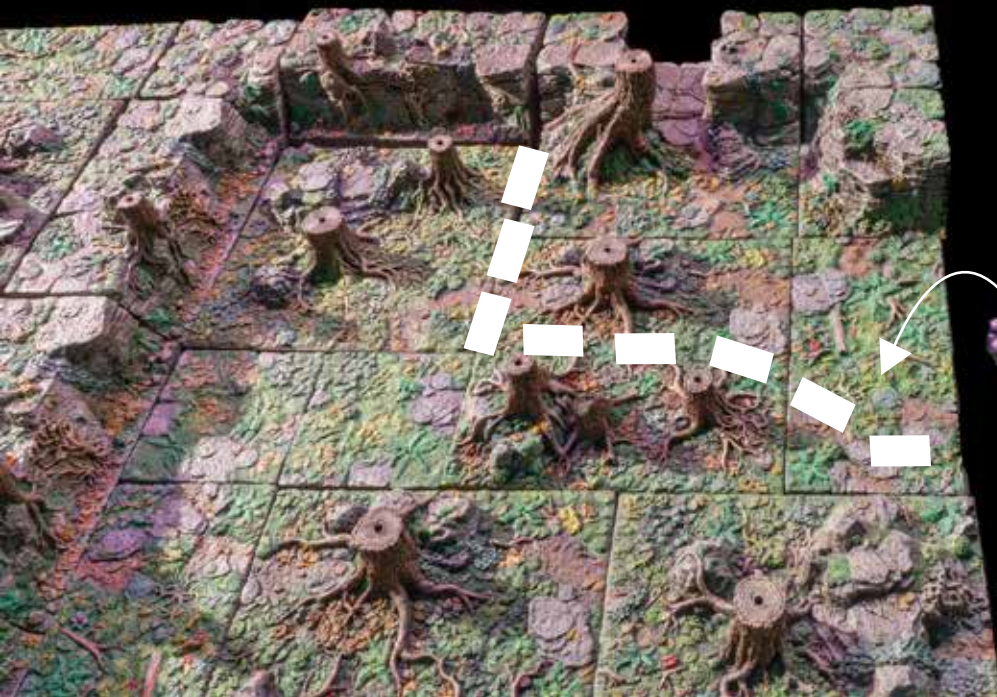


x1 - 6x6 Forest Floor - Medium Cover

◆ Dreadhollow Forest ◆



Tip: Follow the dotted lines to make a border of thorn walls.



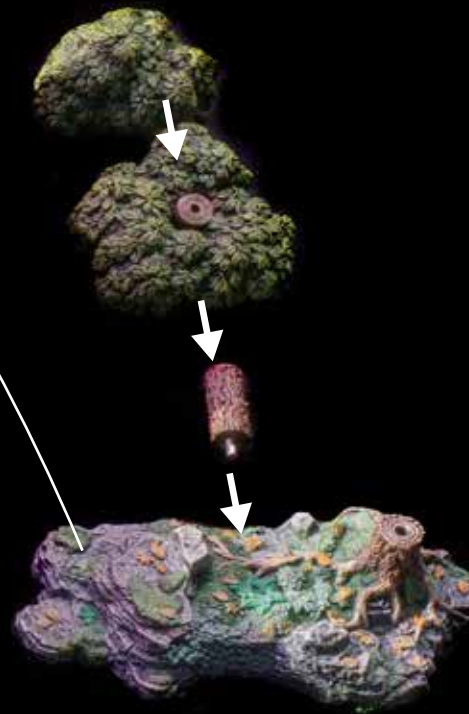
x8 - Thorn Wall



x1 - Faerie Ring



◆ Dreadhollow Forest ◆



x1 - Stump Patch Long



x1 - Small Tree Top

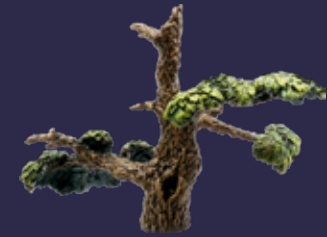
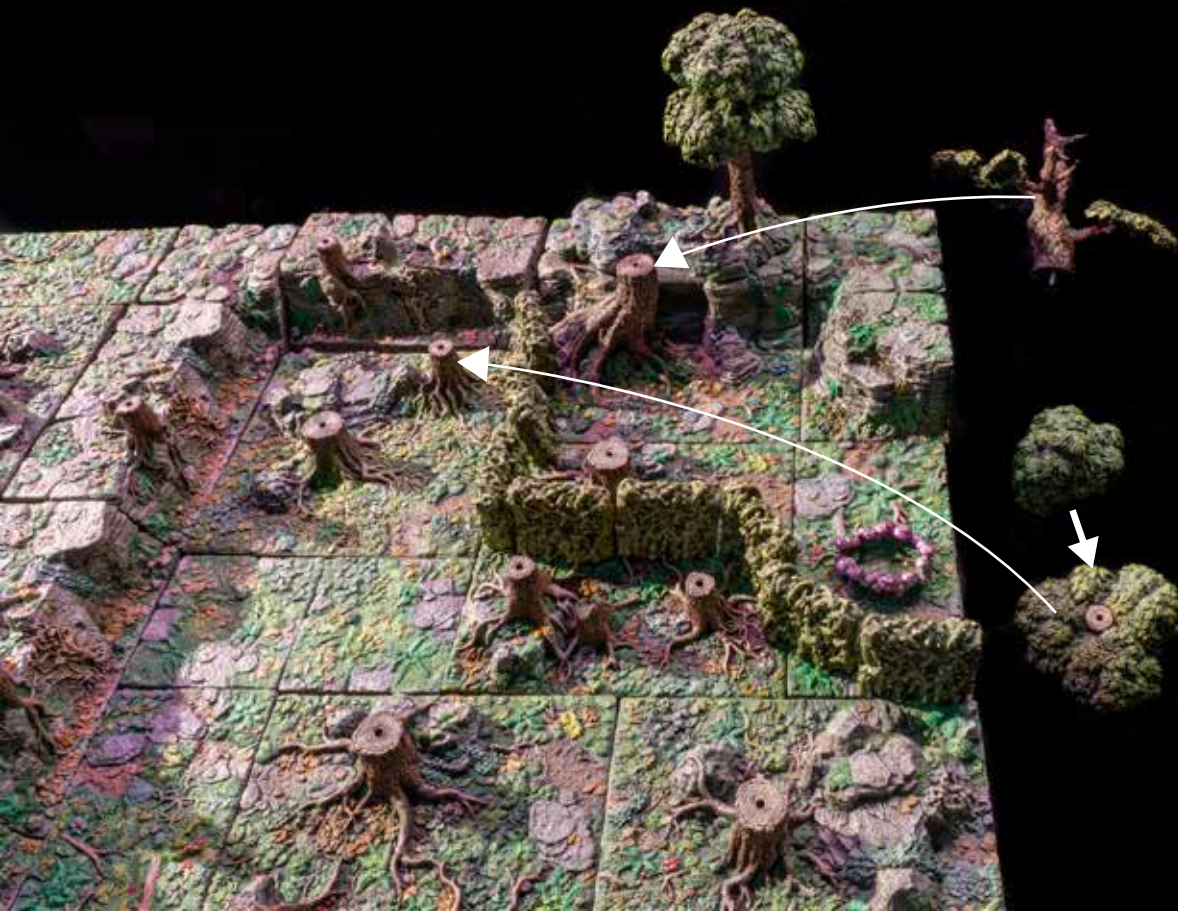


x1 - Small Tree Middle



x1 - Small Bare Trunk

◆ Dreadhollow Forest ◆



x1 - Gnarled Tree



x1 - Small Tree Top



x1 - Small Tree Middle



◆ Dreadhollow Forest ◆



x1 - Large
Tree Top



x1 - Large
Tree Middle



x1 - Large
Tree Bottom



x1 - Large
Bare Trunk



x1 - Large
Stump Topper

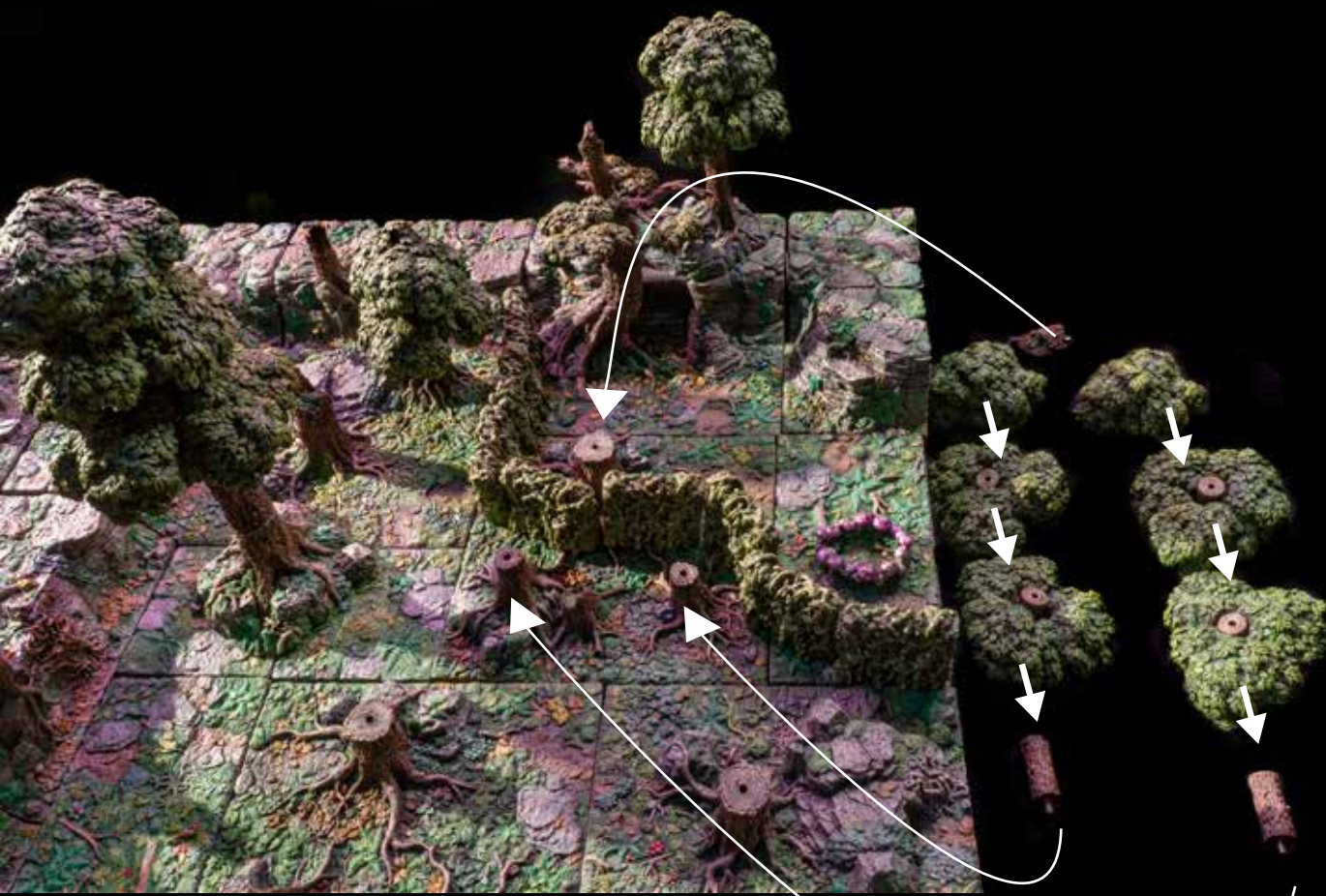


x1 - Small
Stump Topper



x1 - Stump Patch Large

◆ Dreadhollow Forest ◆



x2 - Small Tree Top



x2 - Small Tree Middle



x2 - Small Tree Bottom

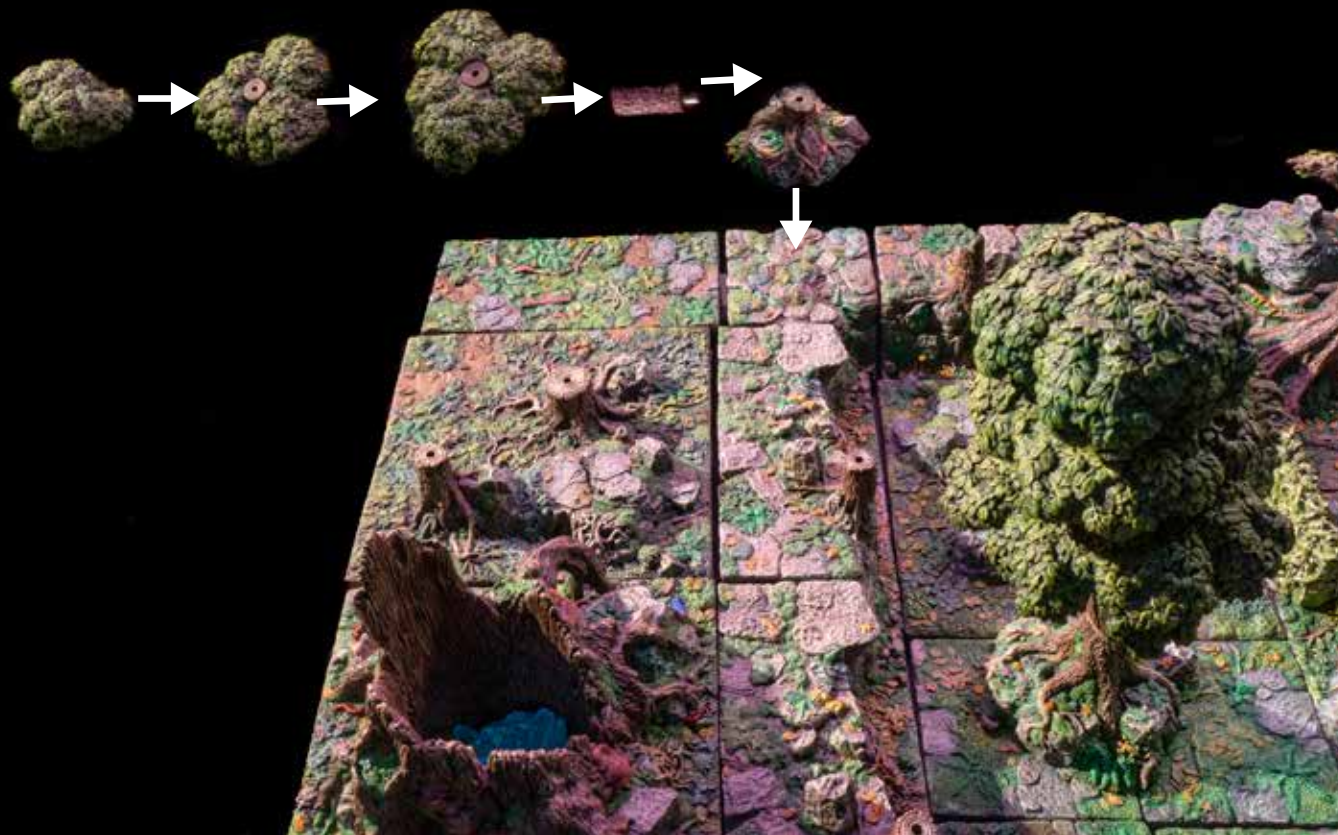


x2 - Small Bare Trunk



x1 - Large
Stump Topper

◆ Dreadhollow Forest ◆



x1 - Small Tree Top



x1 - Small Tree Middle



x1 - Small Tree Bottom

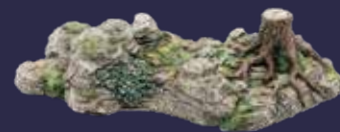
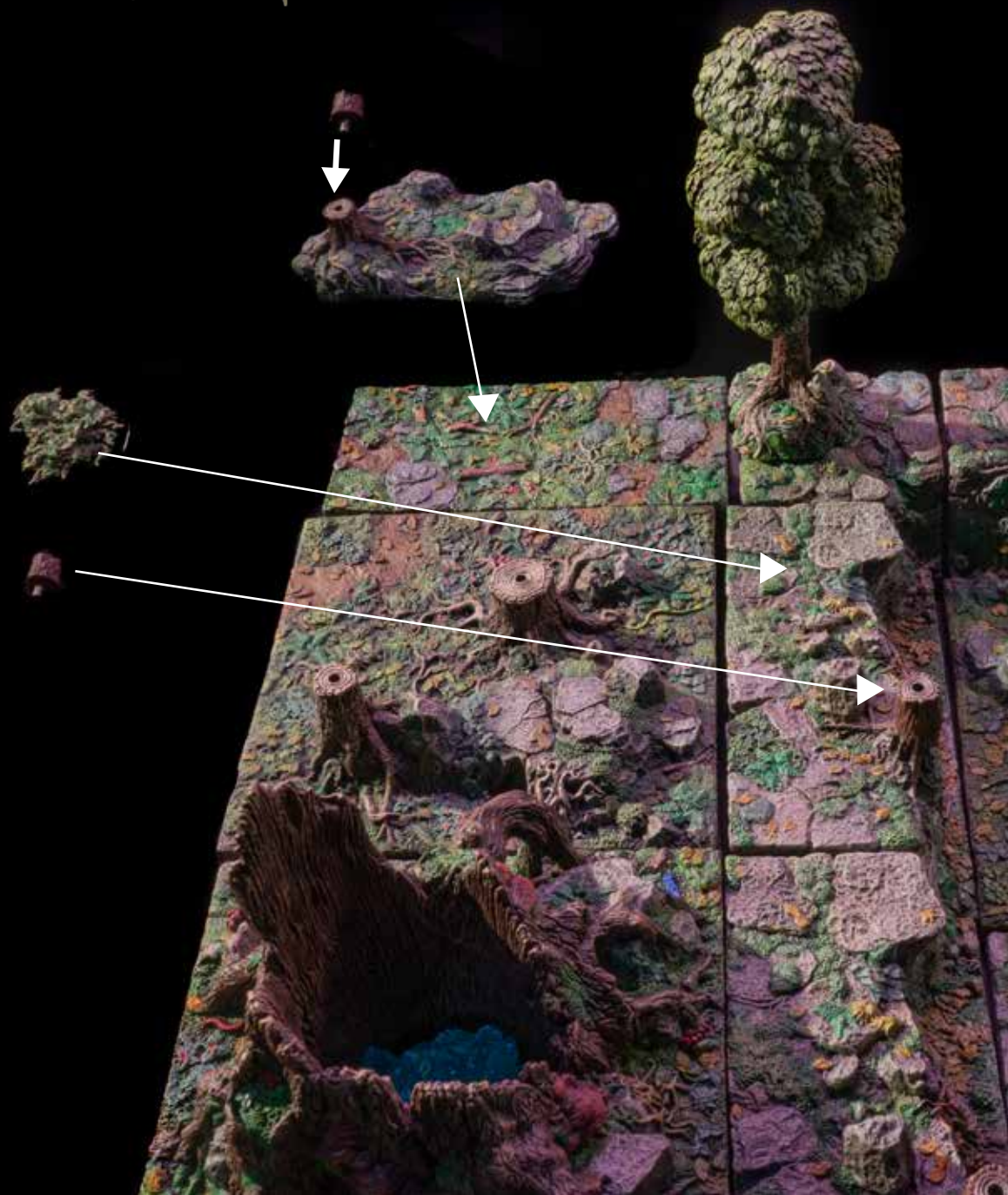


x1 - Small Bare Trunk

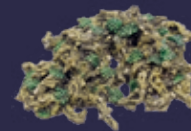


x1 - Stump Patch Small

◆ Dreadhollow Forest ◆



x1 - Stump Patch Long

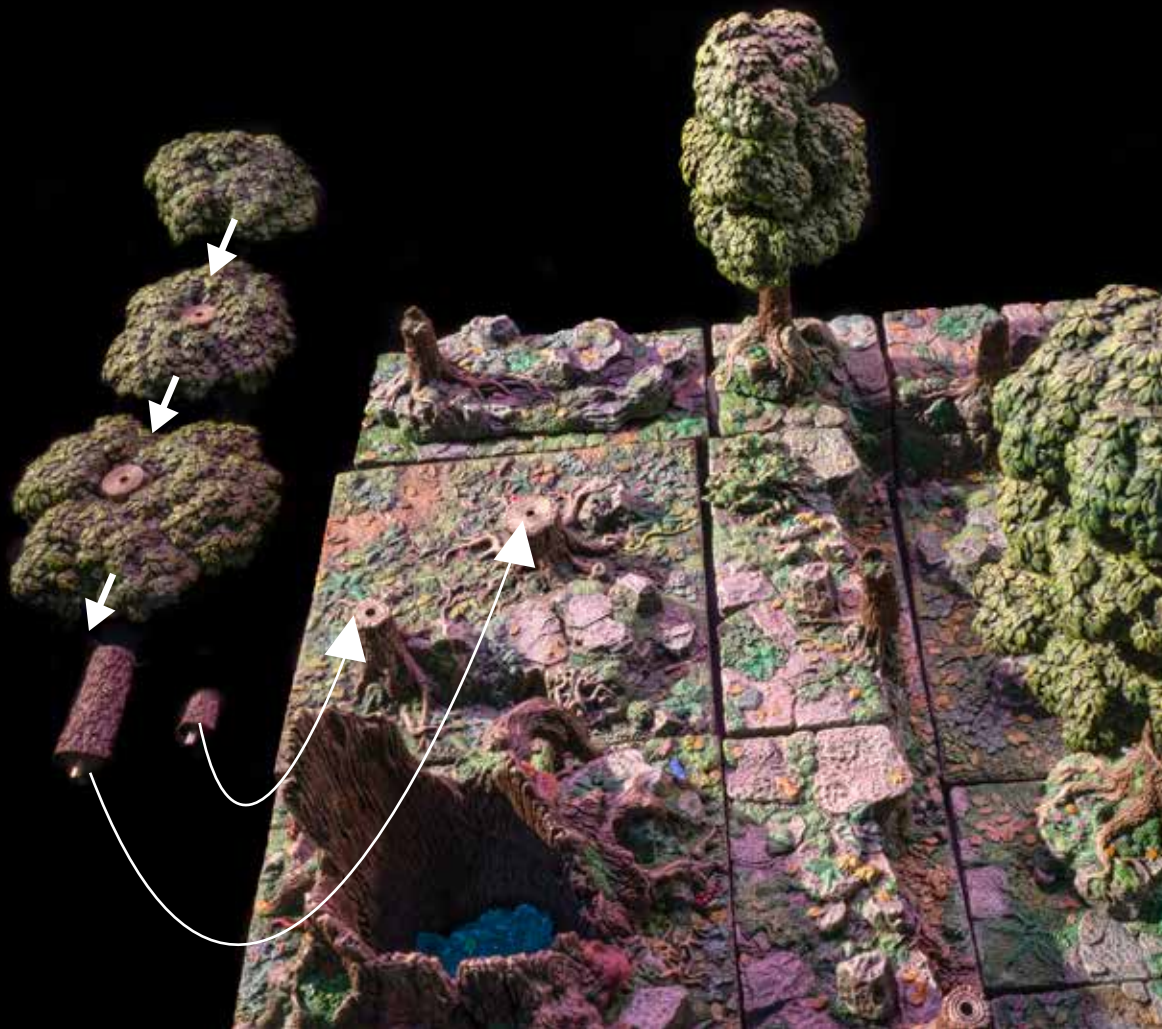


x1 - Thorn Patch Bramble



x2 - Small Stump Topper

◆ Dreadhollow Forest ◆



x1 - Large
Tree Top



x1 - Large
Tree Middle



x1 - Large
Tree Bottom

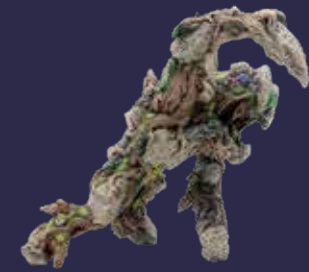


x1 - Large
Bare Trunk



x1 - Small
Stump Topper

Dreadhollow Forest



x1 - Primordial



x1 - Small Tree Top



x1 - Small Tree Middle



x1 - Small Bare Trunk



x1 - Faerie Ring



x1 - Small
Stump Topper

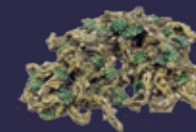
◆ Dreadhollow Forest ◆



x1 - Hollow Stump Lid

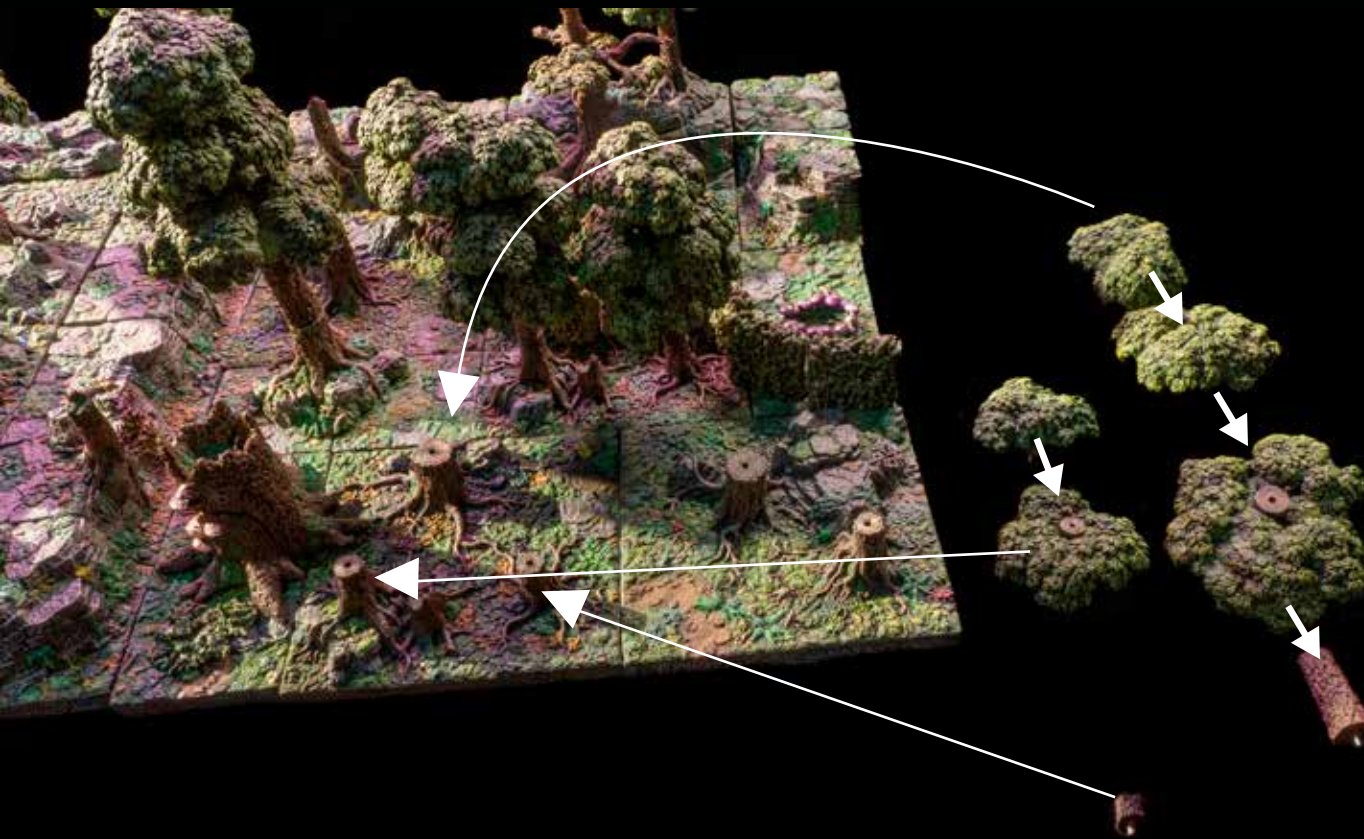


x1 - Hollow Stump



x1 - Thorn Patch Bramble

◆ Dreadhollow Forest ◆



x1 - Small
Tree Top



x1 - Large
Tree Top



x1 - Small
Tree Bottom



x1 - Large
Tree Middle



x1 - Large
Tree Bottom

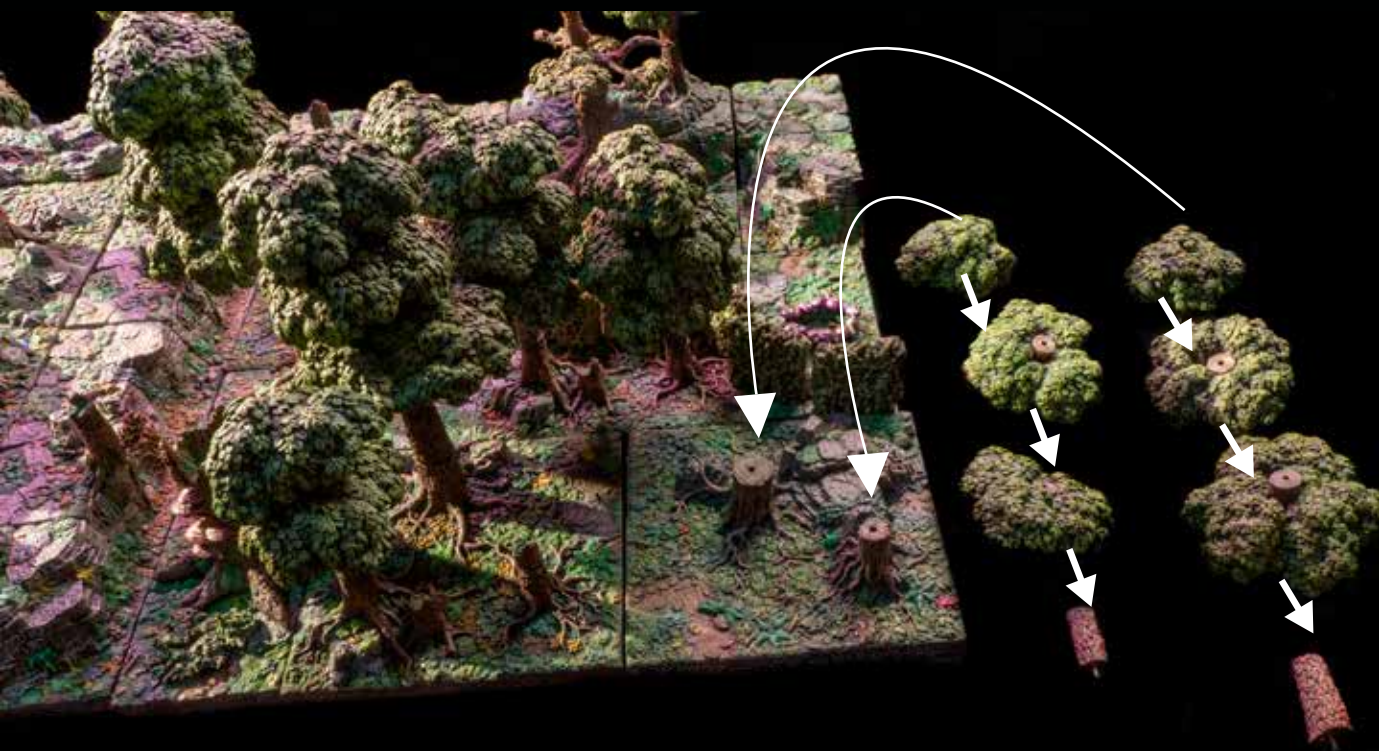


x1 - Small
Stump Topper



x1 - Large
Bare Trunk

◆ Dreadhollow Forest ◆



x1 - Small
Tree Top



x1 - Large
Tree Top



x1 - Small
Tree Middle



x1 - Large
Tree Middle



x1 - Small
Tree Bottom



x1 - Large
Tree Bottom



x1 - Small
Bare Trunk



x1 - Large
Bare Trunk

◆ Dreadhollow Forest ◆



◆ Dreadhollow Forest ◆

- BONUS PIECES -



x4 - Caverns Stilt – 38mm



x1 - Small Bare Trunk



x1 - Small
Stump Topper



x2 - Large Stump Topper

Bonus!