

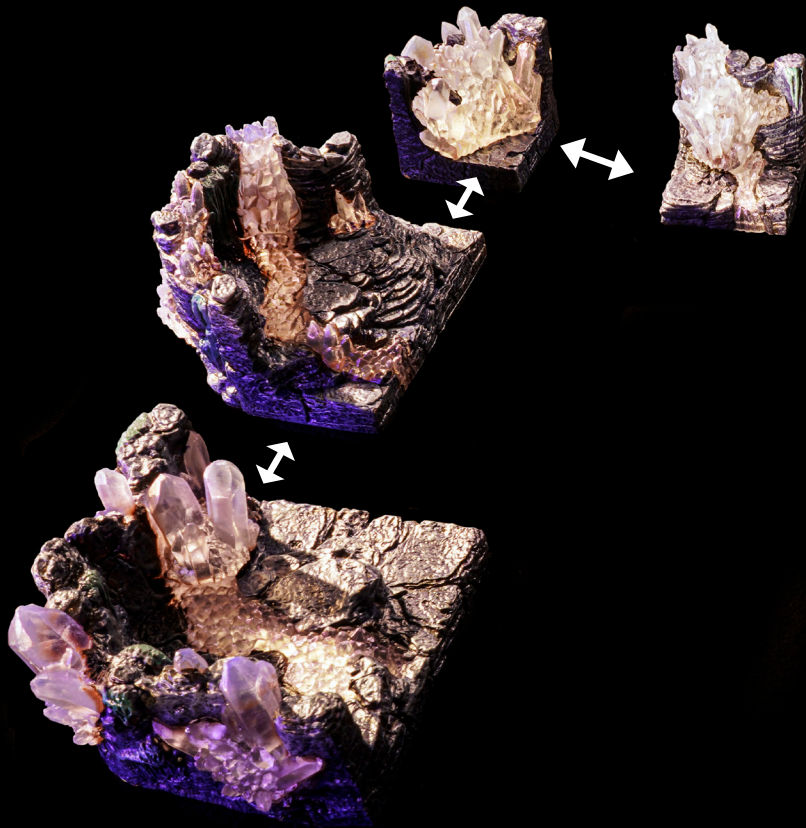
ENCOUNTER 13 BUILD GUIDE

CRYSTAL CAVERNS



DWARVEN FORGE®
**CAVERNS
DEEP**

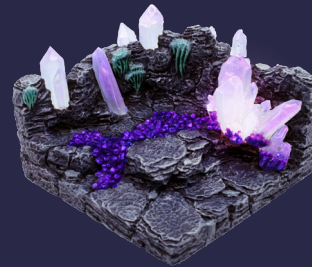
Crystal Caverns



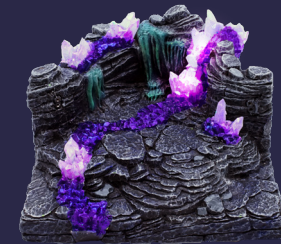
x1 - Crystal Corner
(with LED)



x1 - Crystal Wall
(with LED)

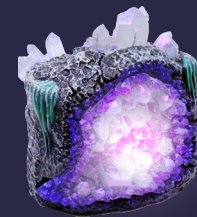
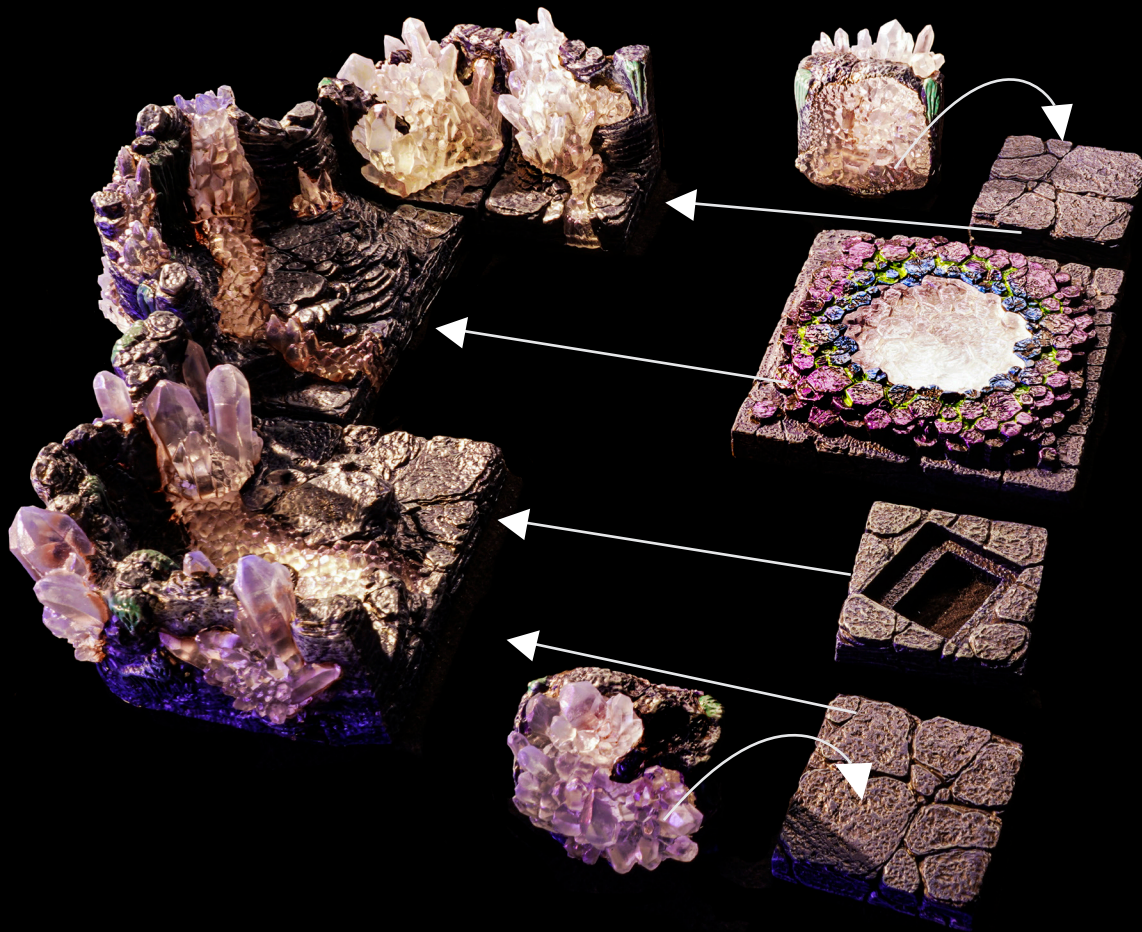


x1 - Crystal Corner 4x4
(LED Floor Crystal
to be added in later step)

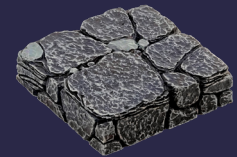


x1 - 2x4 Crystal Alcove
w/LED Sockets

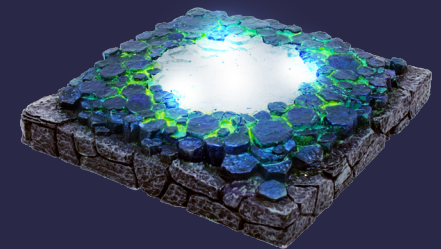
Crystal Caverns



x2 - Crystal Wall Insert (w/LED)



x2 - Flat Floor

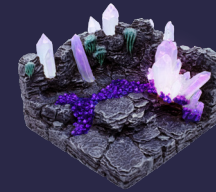
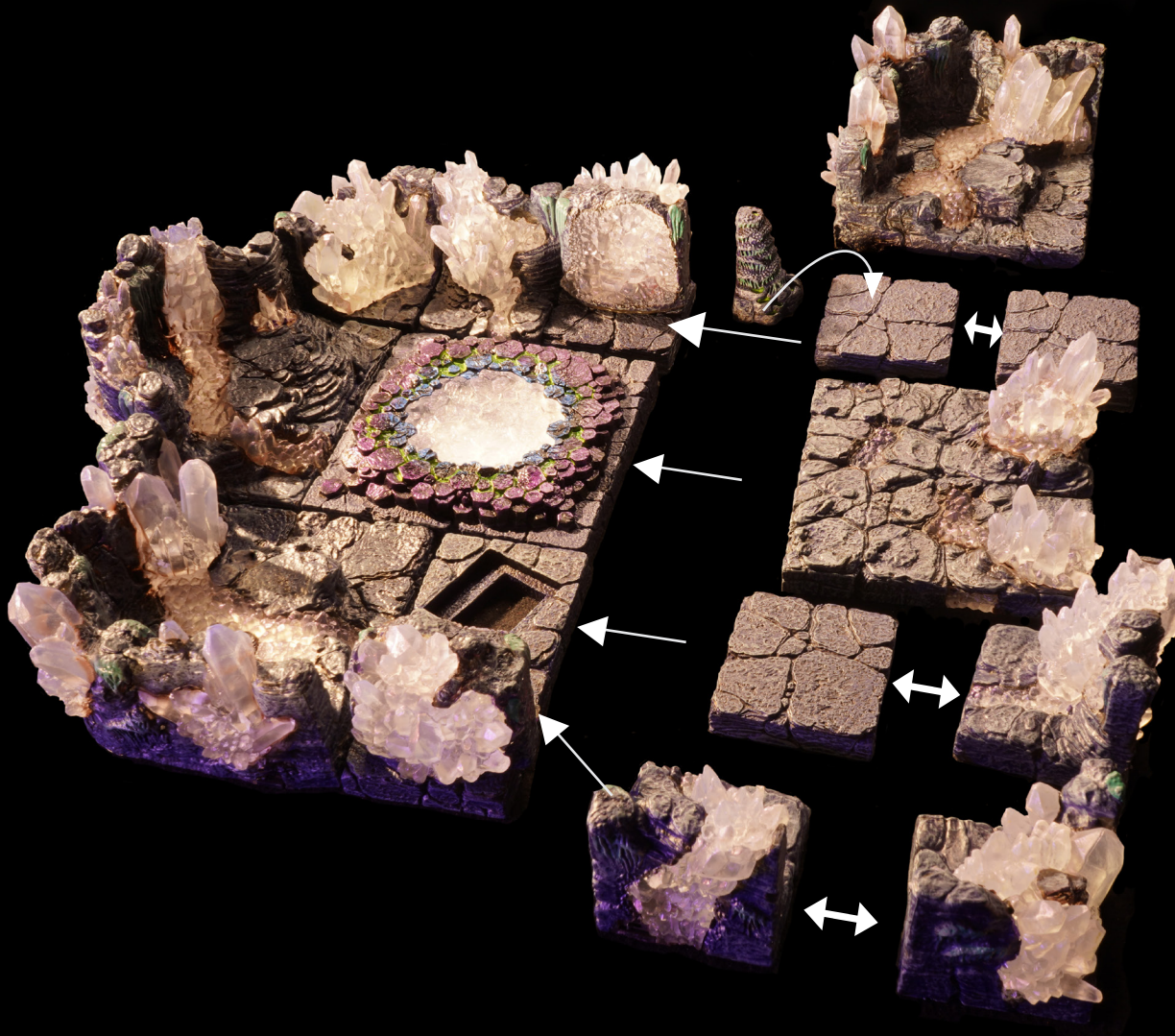


x1 - LED Basalt Floor
with clear insert

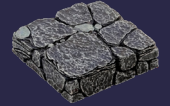


x1 - Crooked Trapdoor Floor

Crystal Caverns



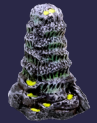
x1 - Crystal Corner 4x4
(LED Floor Crystal
to be added in later step)



x3 - Flat
Floor



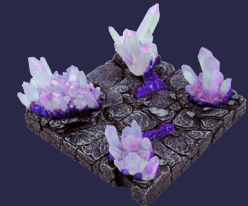
x1 - Crystal
Corner
(with LED)



x1 - Corner
Fill Stalagmite

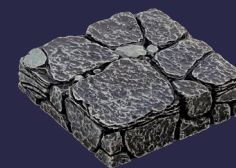
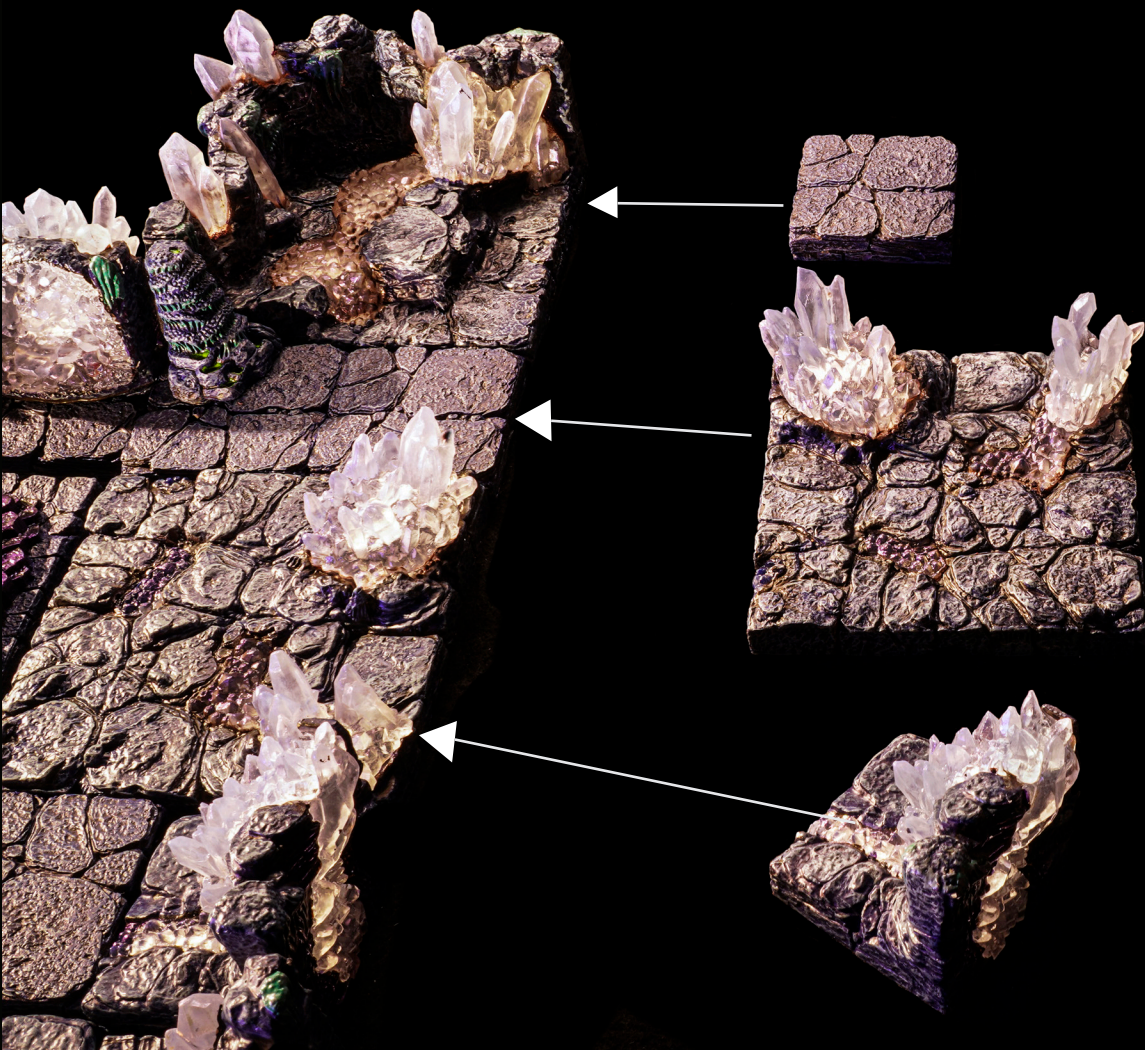


x2 - Crystal Wall
(with LED)



x1 - Crystal Floor 4x4
(freestanding Crystals A and B
to be placed in later steps)

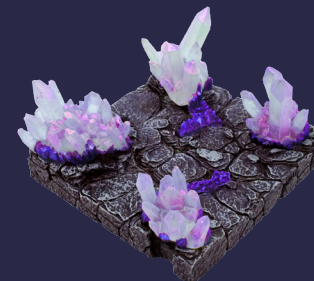
Crystal Caverns



x1 - Flat Floor

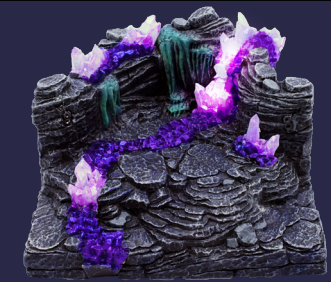
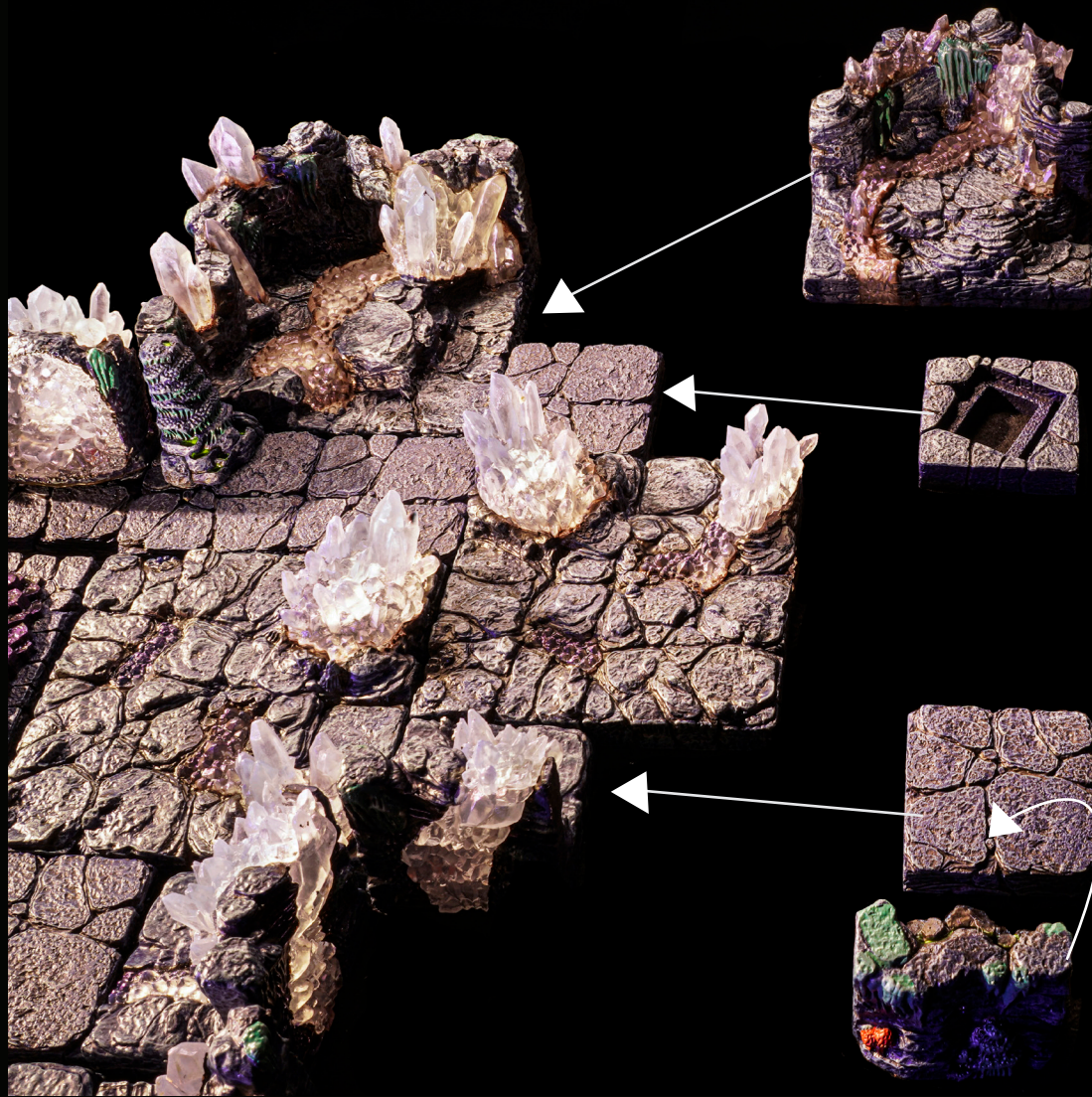


x1 - Crystal Wall (with LED)



x1 - Crystal Floor 4x4
(freestanding Crystals A and B to
be placed in later steps)

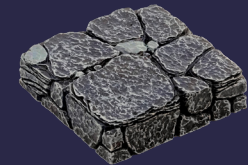
Crystal Caverns



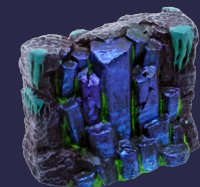
x1 - 2x4 Crystal Alcove



x1 - Crooked Trapdoor Floor

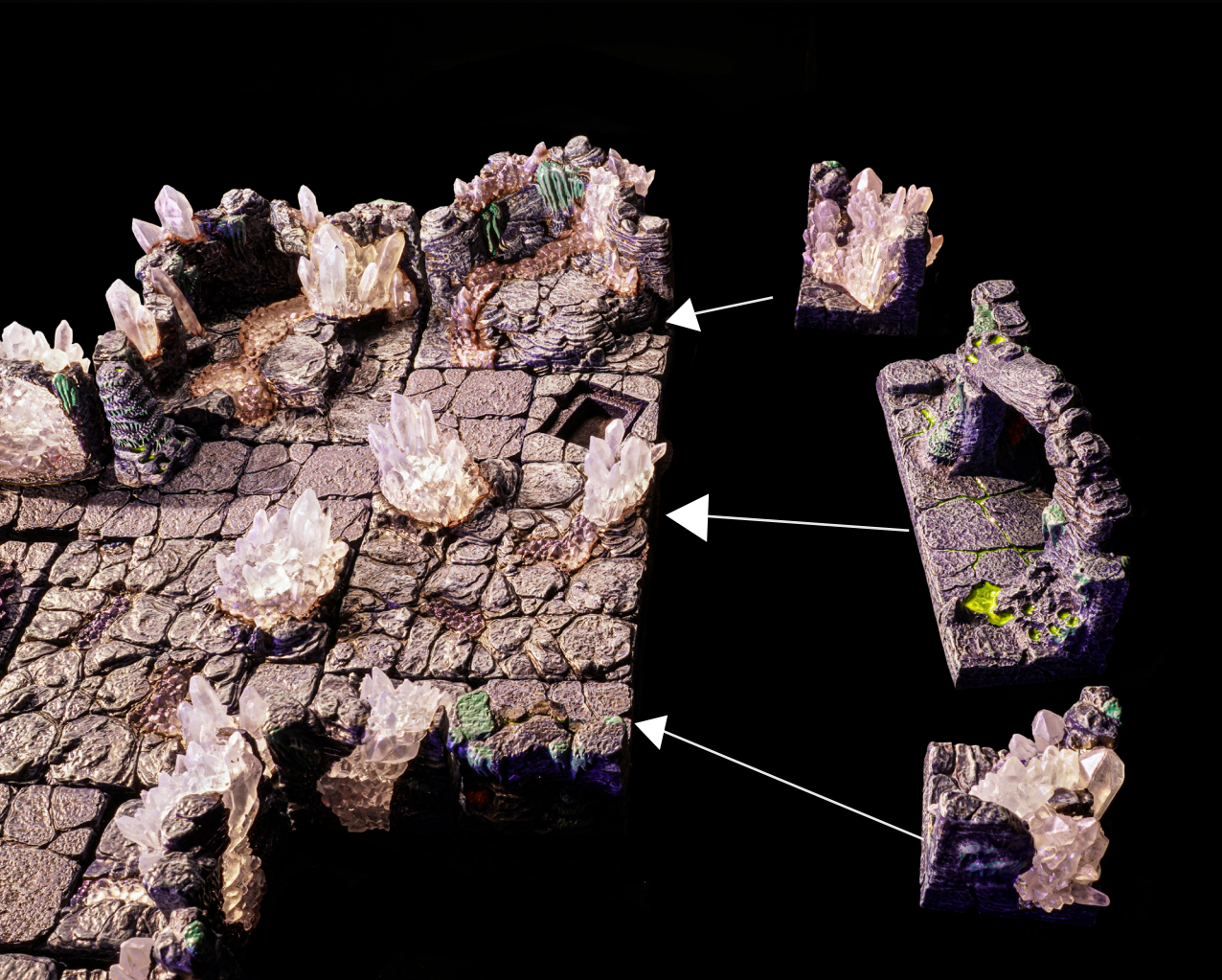


x1 - Flat Floor

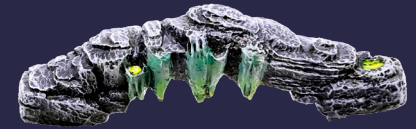


x1 - LED Socket Basalt Wall Insert

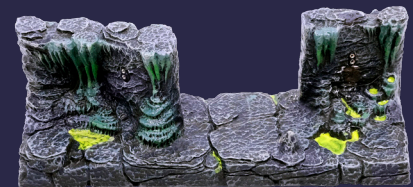
Crystal Caverns



x2 - Crystal Corner (with LED)

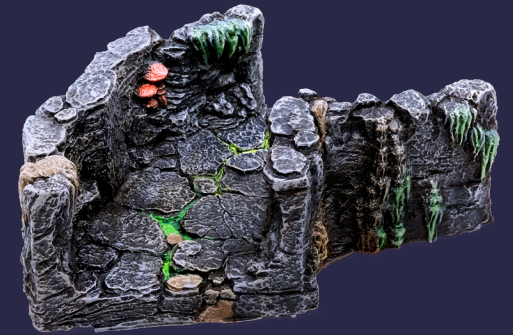
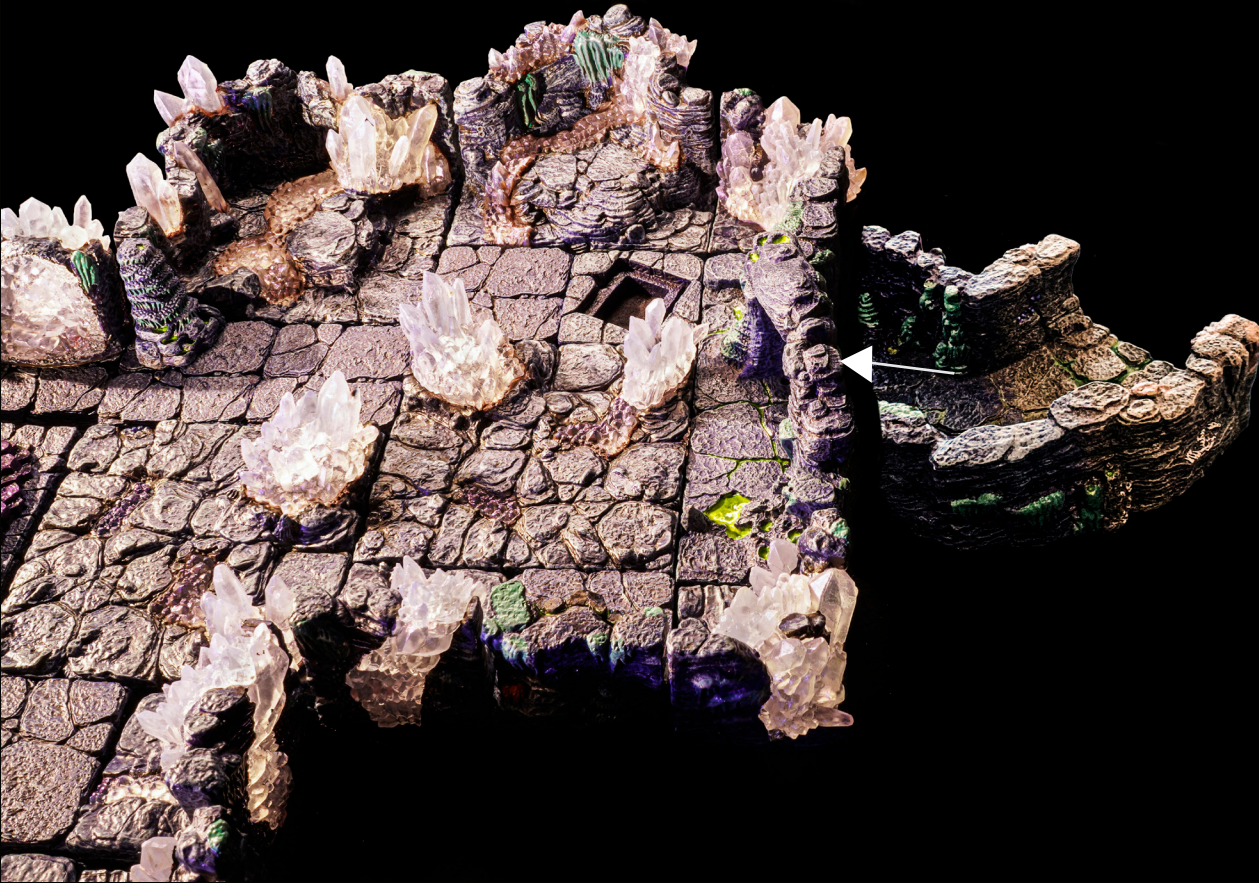


x1 - Arch Topper



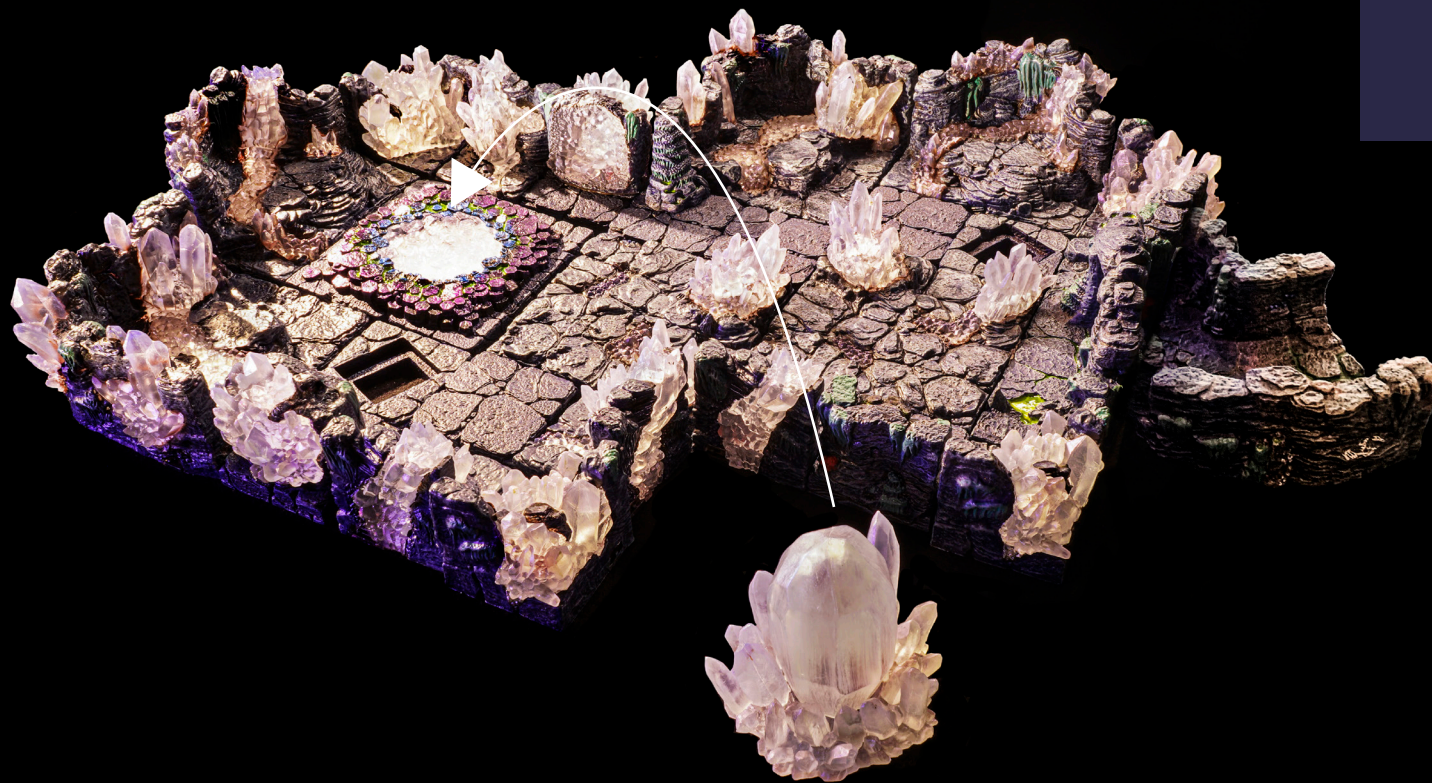
x1 - 6x2 Entrance Wall
w/ LED Sockets

Crystal Caverns



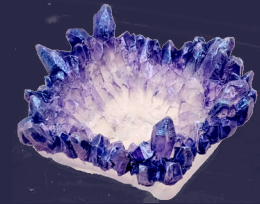
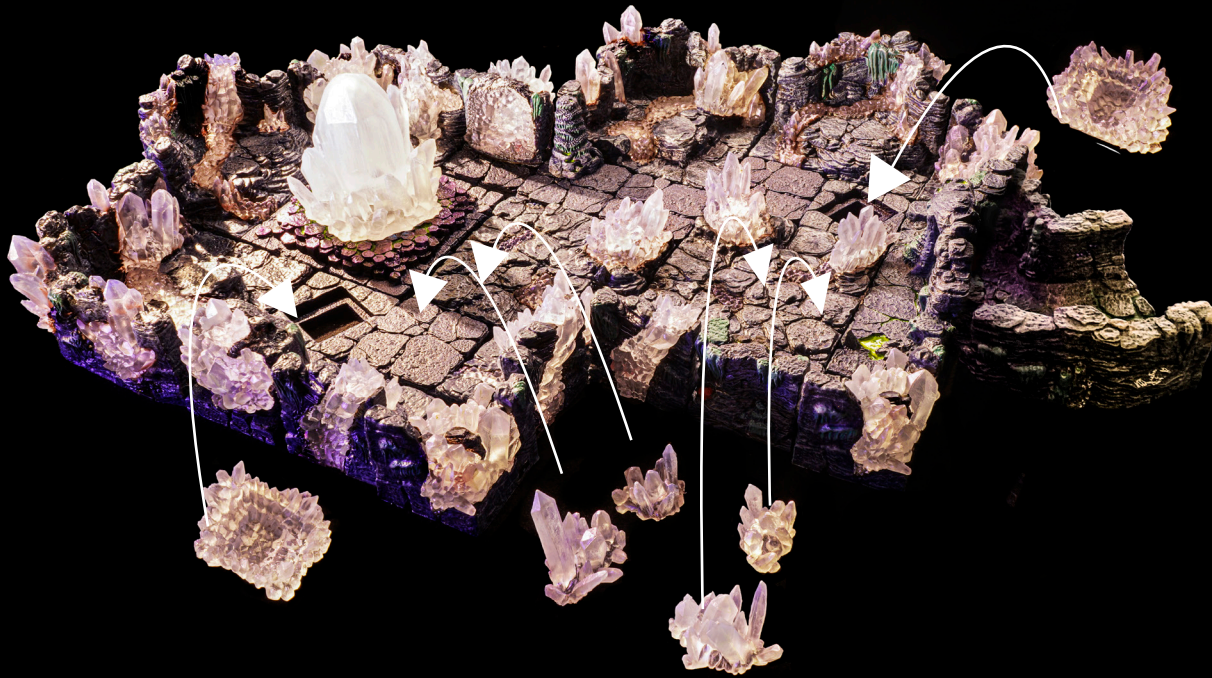
x1 - Widening Passage
(with transition to regular
caverns paint scheme)

Crystal Caverns



x1 - Heartshard

Crystal Caverns



x2 - Geode Trapdoor Insert

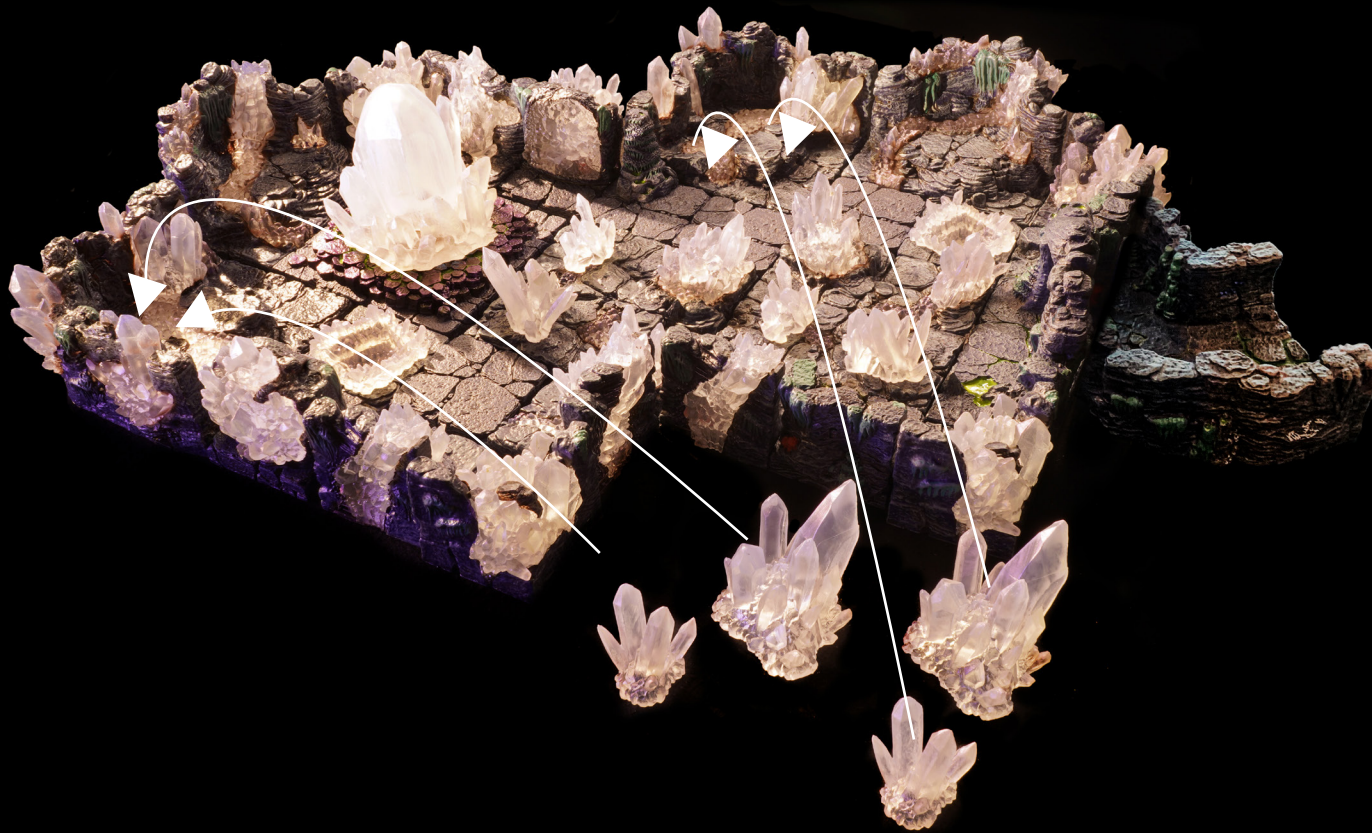


x2 - Freestanding Floor
Crystal A



x2 - Freestanding Floor
Crystal B

Crystal Caverns

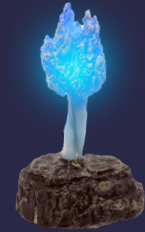
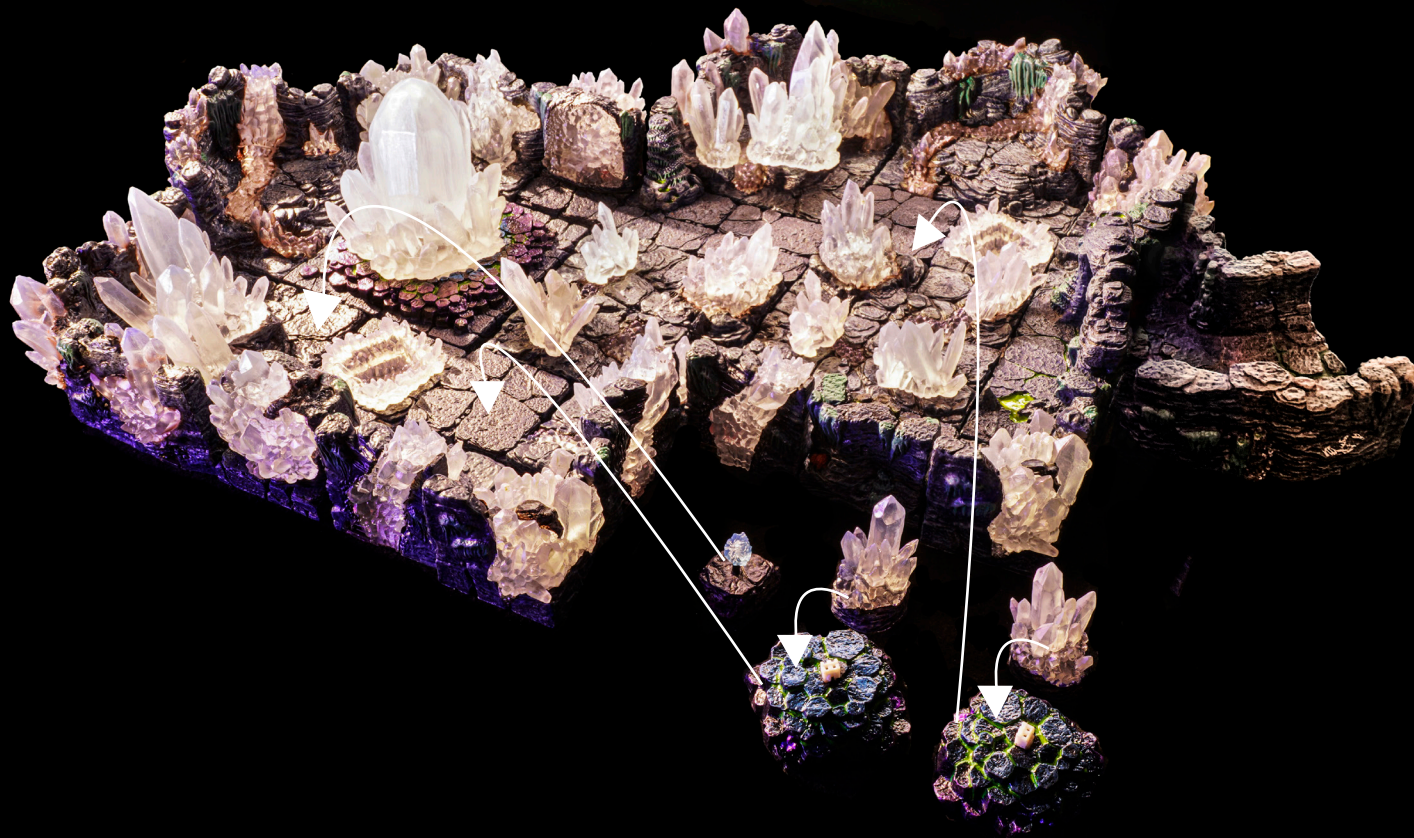


x2 - Freestanding Corner Crystal



x2 - LED Floor Crystal
(part of Corner Crystal 4x4s)

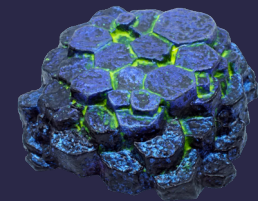
Crystal Caverns



x1 - Will-O-Wisp

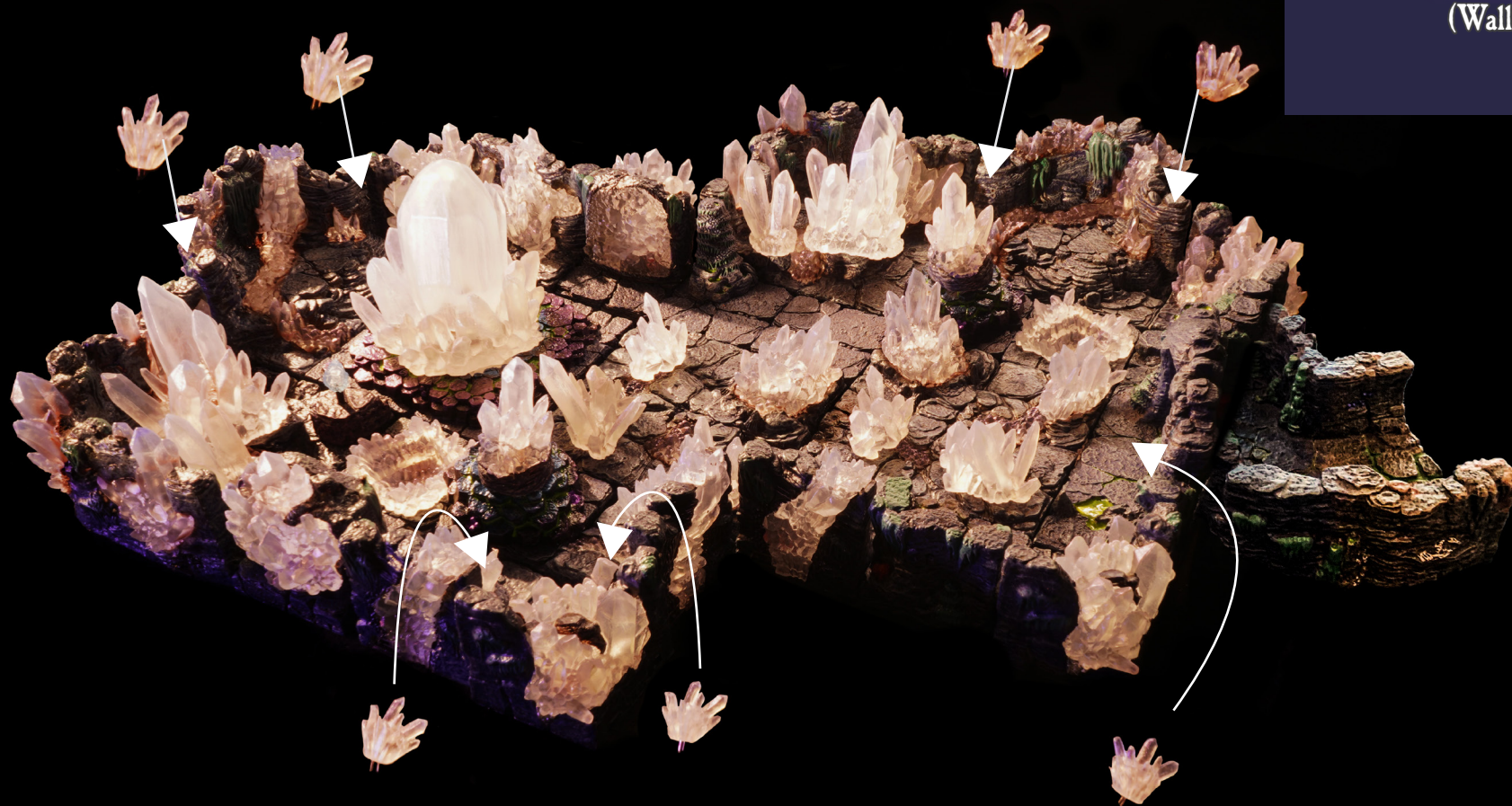


x2 - LED Floor Crystal
(Floor Socket)



x2 - Freestanding Basalt LED
Floor Socket

Crystal Caverns



x7 - LED Wall Crystal
(Wall Socket)

Crystal Caverns

Make sure the switches are turned on,
then use the remote to change colors,
brightness, and more!



x1 - LED Remote

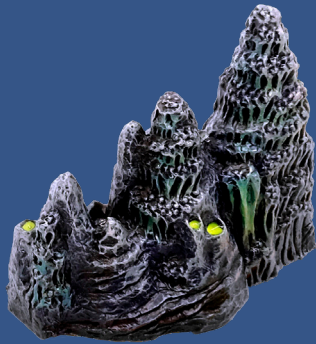
Battery Tips: Do not use remote to power off individual LEDs. Manually switch pieces to OFF to conserve battery.

LED crystals will flicker only on RED to indicate battery is low.



Crystal Caverns

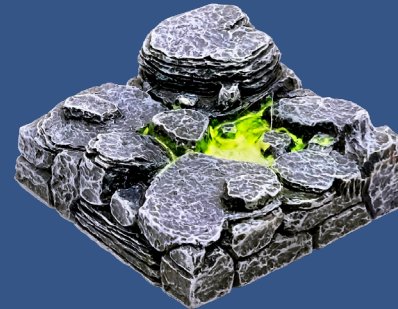
- BONUS PIECES -



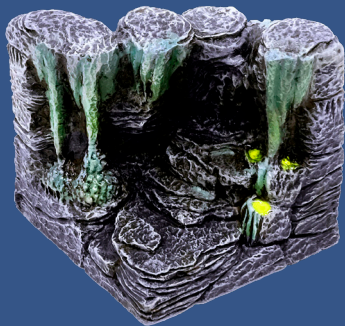
x1 - Rising Stalagmite



x3 - Led Tribal Wall Torch



x1 - Stagnant Pool Floor



x1 - Diagonal Wall



x1 - Will-O-Wisp



x1 - LED Remote

Bonus!