

ENCOUNTER 5 BUILD GUIDE

CAVE OF RUIN



DWARVEN FORGE
**CAVERNS
DEEP**

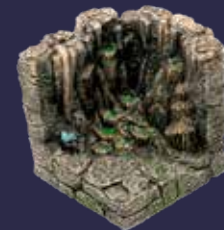
◆ Cave of Ruin ◆



x1 - Ancient Double
Door Wall

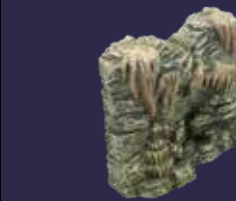
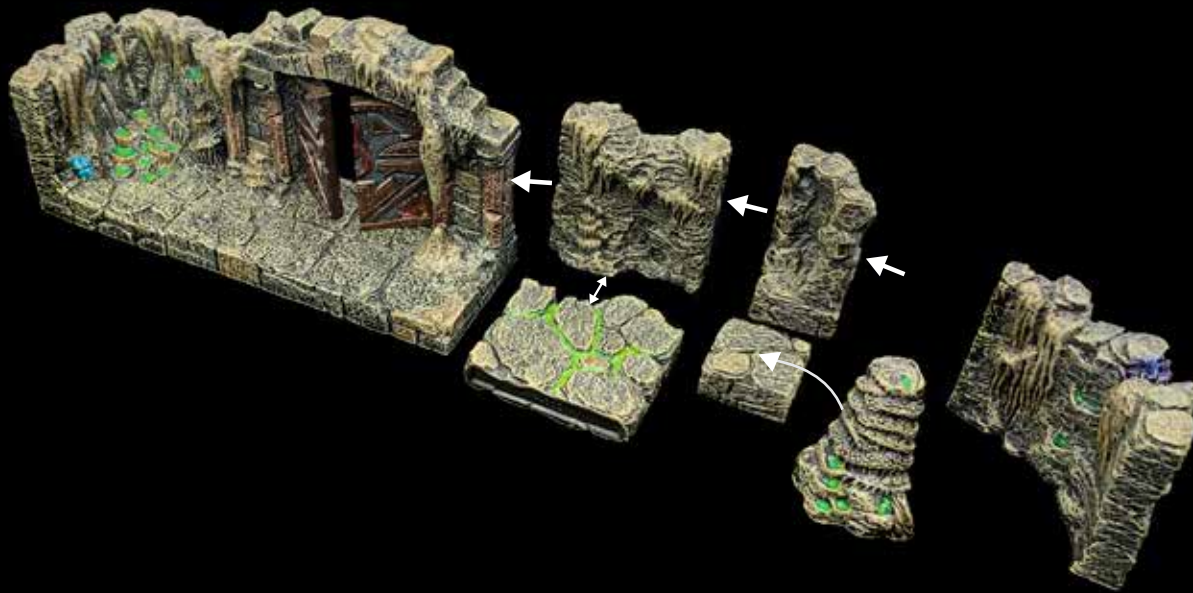


x1 - Ancient Dwarven Doors



x1 - Cascading Pool Corner

◆ Cave of Ruin ◆



x1 - Trifecta Straight Wall



x1 - Trifecta Straight Ledge



x1 - 1x1 Floor



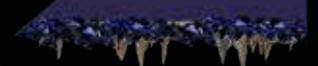
x1 - 1x1 Corner



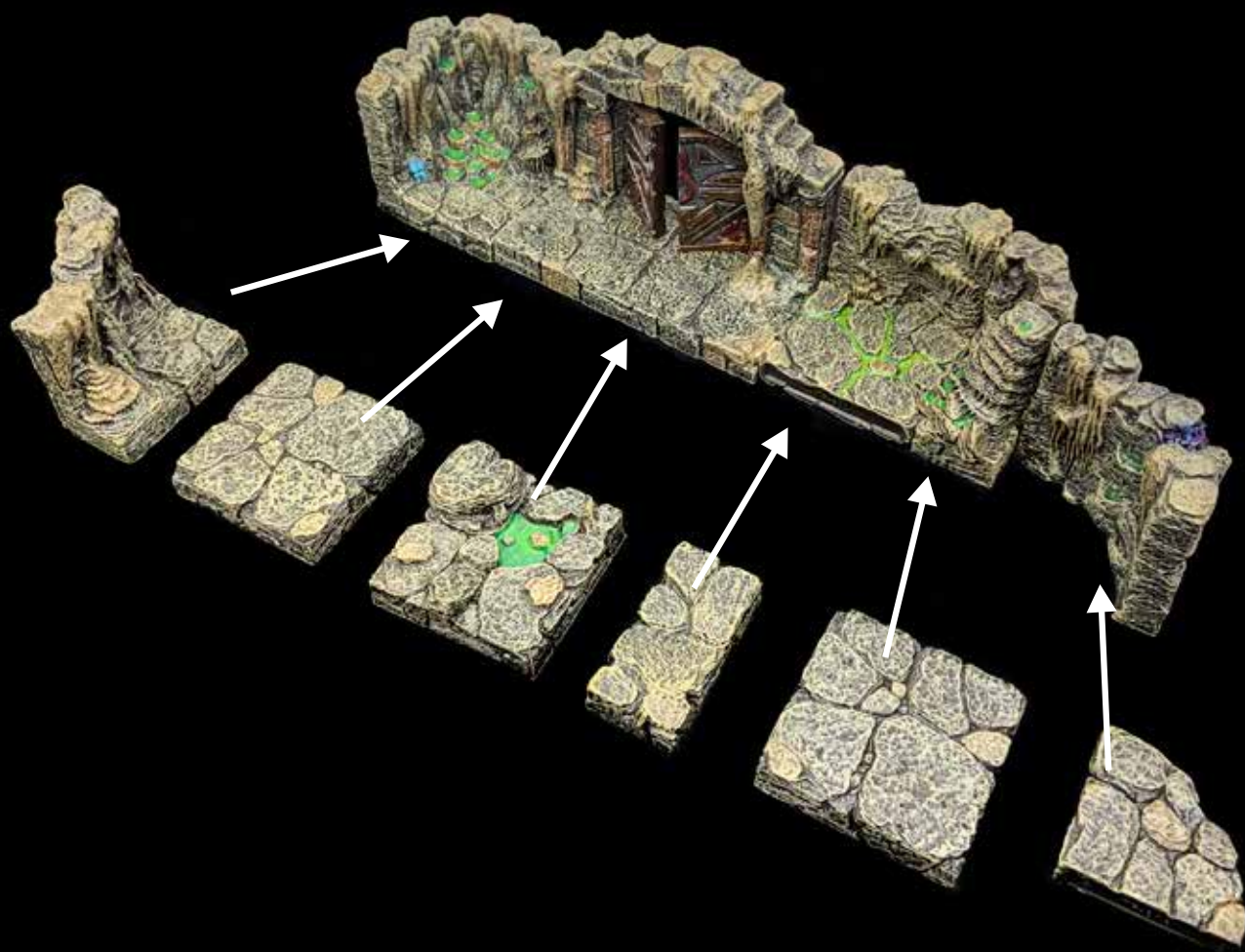
x1 - Corner Fill Stalagmite



x1 - Trifecta Corner Wall



Cave of Ruin



x1 - Swell Wall Right



x2 - Flat Floor



x1 - Stagnant
Puddle Floor



x1 - Trifecta Corner
Ledge



x1 - 1x2 Floor

Cave of Ruin



◆ Cave of Ruin ◆



x1 - 1x1 Corner



x1 - 1x2 Floor



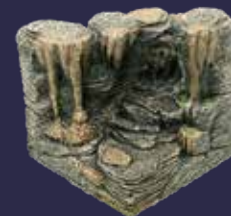
x1 - Flat Floor



x1 - Corner Fill
Stalagmite

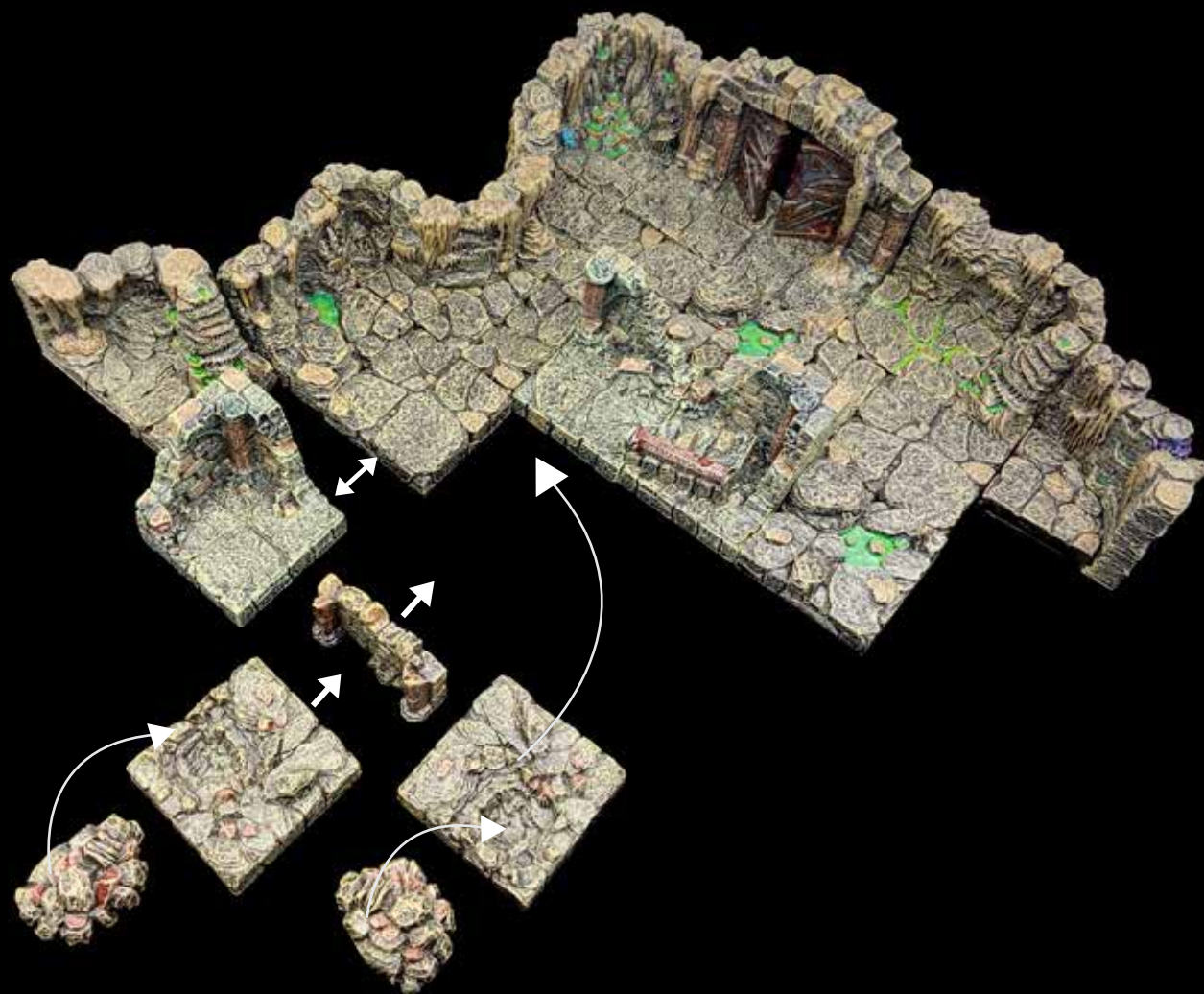


x1 - Straight Wall

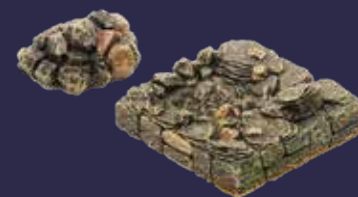


x1 - Diagonal Wall

◆ Cave of Ruin ◆



x1 - Ruined Freestanding
Vaulted Wall



x2 - Rubble Strewn
Dungeon Floor



x1 - Ruined Corner

◆ Cave of Ruin ◆



x3 - Ruined Vaulted Wall Right

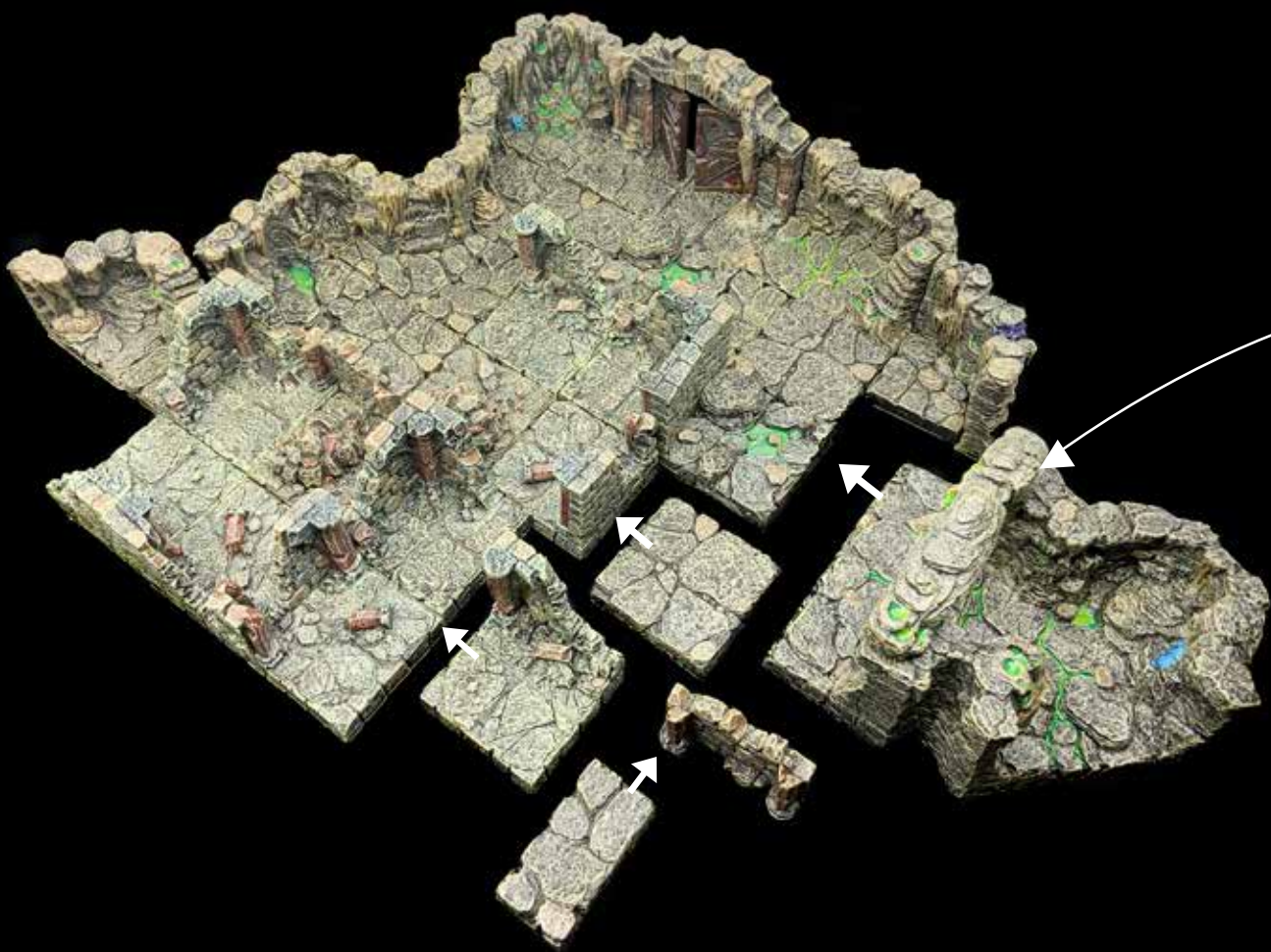


x1 - Ruined Vaulted Wall Left



x1 - Ruined Corner

◆ Cave of Ruin ◆



x1 - Ruined Freestanding
Vaulted Wall



x1 - Ruined
Vaulted Wall Left



x1 - 1x2 Floor



x1 - Flat Floor



x1 - Arch Topper



x1 - Passage Intersection

Cave of Ruin



x1 - Straight Wall



x1 - 1x1 Straight Wall



x1 - Rubble Strewn
Dungeon Floor



x1 - 1x2 Floor

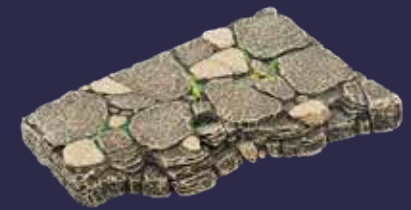


x1 - Trifecta
Swell Wall Left



x1 - Trifecta
Swell Ledge Left

◆ Cave of Ruin ◆



x1 - Trifecta Long Swell
Ledge Right



x3 - Flat Floor



x1 - Stagnant Puddle Floor

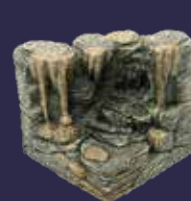


x1 - Ruined Freestanding
Vaulted Wall

Cave of Ruin



xl - Arch Topper



xl - Diagonal Wall



xl - LED Socket
Basalt Wall Insert



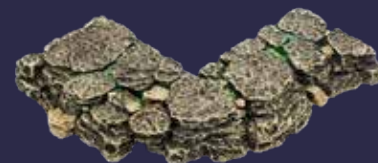
xl - 6x2 Entrance Wall
w/ Double LED Sockets



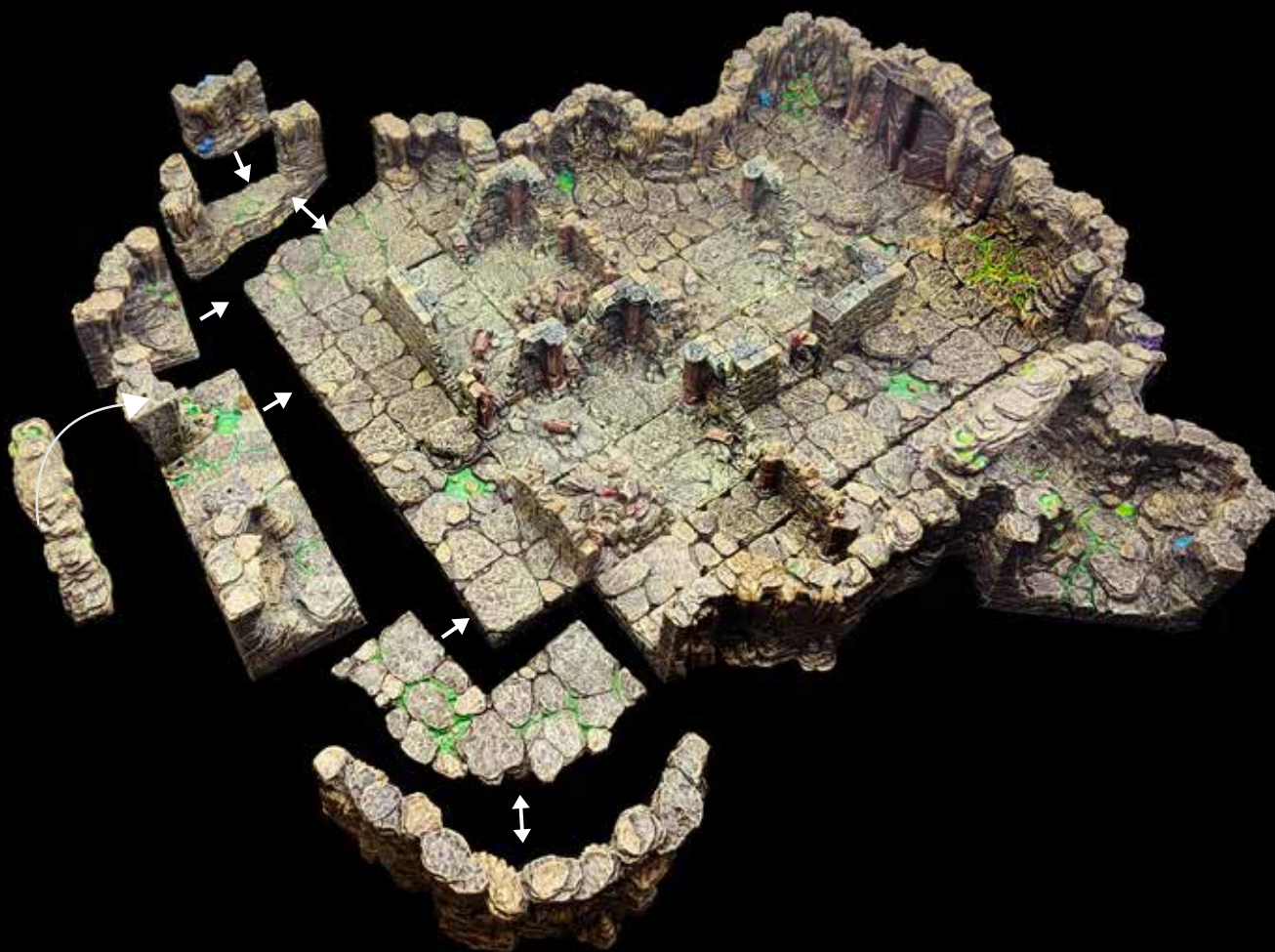
xl - Trifecta Long Swell Wall Right



xl - Trifecta Large Curve Wall



xl - Trifecta Large Curve Ledge



◆ Cave of Ruin ◆



x1 - Yorghrim
Warchief (on foot)



x3 - LED Tribal
Torch Wall Socket



x1 - Ruins Breakaway Pieces



x1 - Riser A

◆ Cave of Ruin ◆

If building this room as part of the full Caverns Deep Encounter, replace the LED Basalt Wall Insert with the Low Arch Wall Insert.



◆ Cave of Ruin ◆

- BONUS PIECES -



xl - Ruined Ancient Dwarven Doors



xl - Ruins Breakaway Pieces



xl - Gem Cache



xl - Low Arch Wall Insert



xl - Massive Stone Door

Bonus!